

## Excellent Integrated System Limited

Stocking Distributor

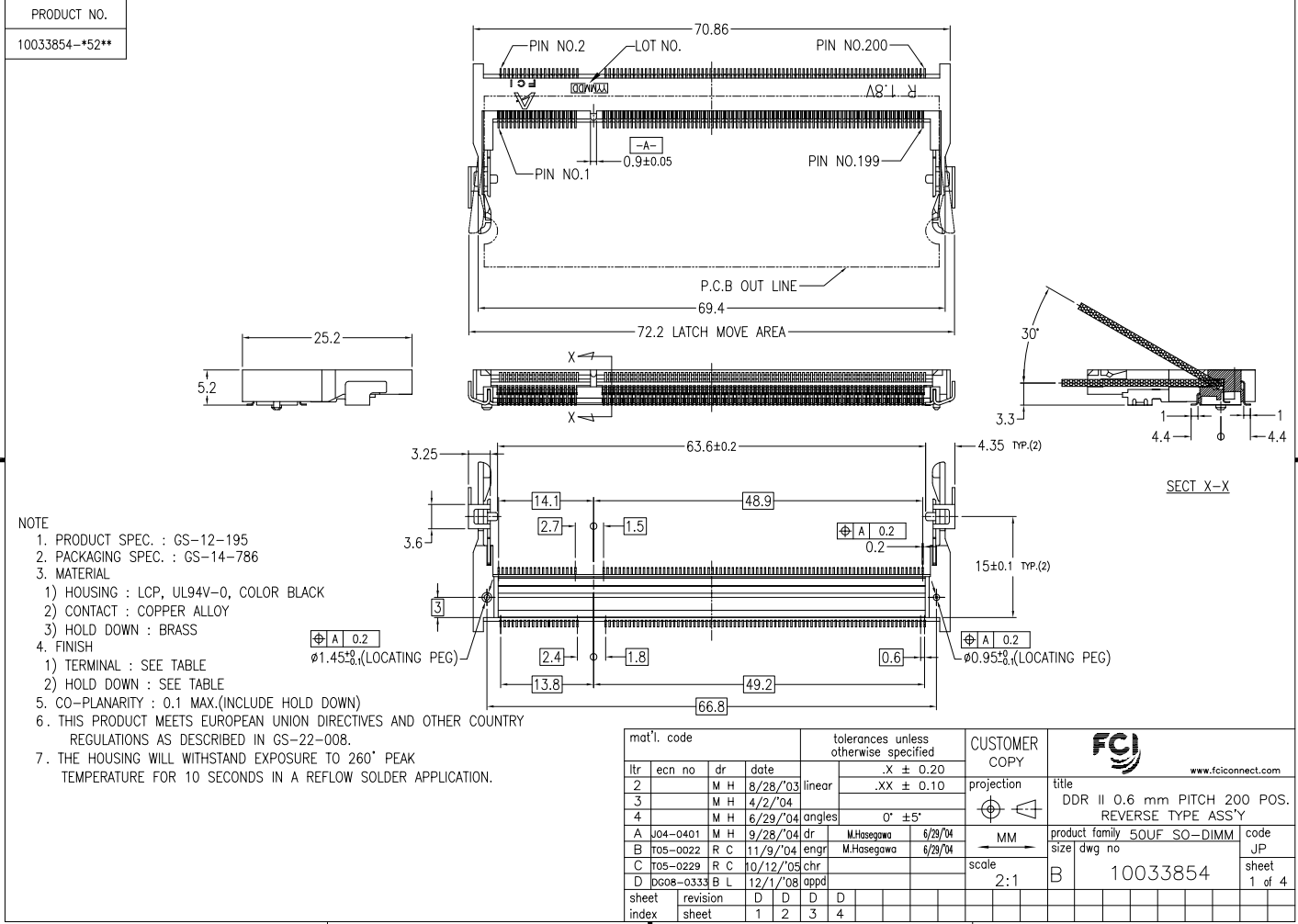
Click to view price, real time Inventory, Delivery & Lifecycle Information:

[FCI](#)  
[10033854-052FSLF](#)

For any questions, you can email us directly:  
[sales@integrated-circuit.com](mailto:sales@integrated-circuit.com)

Tous droits strictement réservés. Reproduction ou communication o des tiers interdite sous quelque forme que ce soit sans autorisation écrite préalable. Propriété de c FCI. Droits de reproduction FCI.

All rights strictly reserved. Reproduction or issue to third parties in any form whatever is not permitted without written authority from the proprietor. Property of FCI. Copyright FCI.



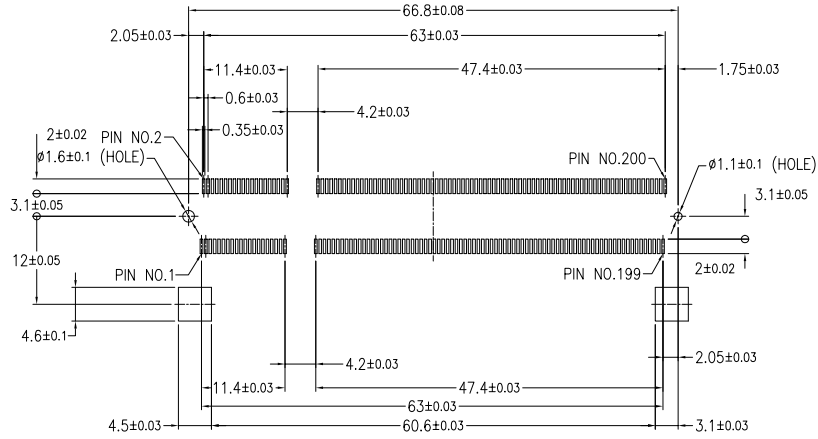
- NOTE**
1. PRODUCT SPEC. : GS-12-195
  2. PACKAGING SPEC. : GS-14-786
  3. MATERIAL
    - 1) HOUSING : LCP, UL94V-0, COLOR BLACK
    - 2) CONTACT : COPPER ALLOY
    - 3) HOLD DOWN : BRASS
  4. FINISH
    - 1) TERMINAL : SEE TABLE
    - 2) HOLD DOWN : SEE TABLE
  5. CO-PLANARITY : 0.1 MAX.(INCLUDE HOLD DOWN)
  6. THIS PRODUCT MEETS EUROPEAN UNION DIRECTIVES AND OTHER COUNTRY REGULATIONS AS DESCRIBED IN GS-22-008.
  7. THE HOUSING WILL WITHSTAND EXPOSURE TO 260° PEAK TEMPERATURE FOR 10 SECONDS IN A REFLOW SOLDER APPLICATION.

mat'l. code		tolerances unless otherwise specified		CUSTOMER COPY	FCI www.fciconnect.com	
ltr	ecn no	dr	date			.X ± 0.20
2		M H	8/28/'03	linear .XX ± 0.10		
3		M H	4/2/'04	projection		
4		M H	6/29/'04	angles 0° ± 5°		
A	J04-0401	M H	9/28/'04	dr	← MM scale 2:1	
B	705-0022	R C	11/9/'04	engr		
C	705-0229	R C	10/12/'05	chr	B 10033854 sheet 1 of 4	
D	0608-0333	B L	12/1/'08	appd		
sheet	revision	D	D	D	D	
index	sheet	1	2	3	4	



Tous droits strictement réservés. Reproduction ou communication à des tiers interdite sous quelque forme que ce soit sans autorisation écrite préalable. Propriété de c FCI. Droits de reproduction FCI.

All rights strictly reserved. Reproduction or issue to third parties in any form whatever is not permitted without written authority from the proprietor. Property of FCI. Copyright FCI.

PRODUCT NO.	10033854-#52**
-------------	----------------



RECOMMENDED MOUNTING P.C.B LAYOUT

mat'l. code		tolerances unless otherwise specified		CUSTOMER COPY		 www.fciconnect.com	
ltr	ecn no	dr	date	linear	.X ± 0.20	projection	title
D					.XX ± 0.10		DDR II 0.6 mm PITCH 200 POS. REVERSE TYPE ASS'Y
				angles	0° ± 5°	MM	product family 50UF SO-DIMM
		dr	M.Hosegawa	6/28/04		scale	size
		enr	M.Hosegawa	6/28/04	2:1	B	dwg no
		chr					code
		appd					JP
sheet index	revision sheet						sheet
							2 of

ACAD

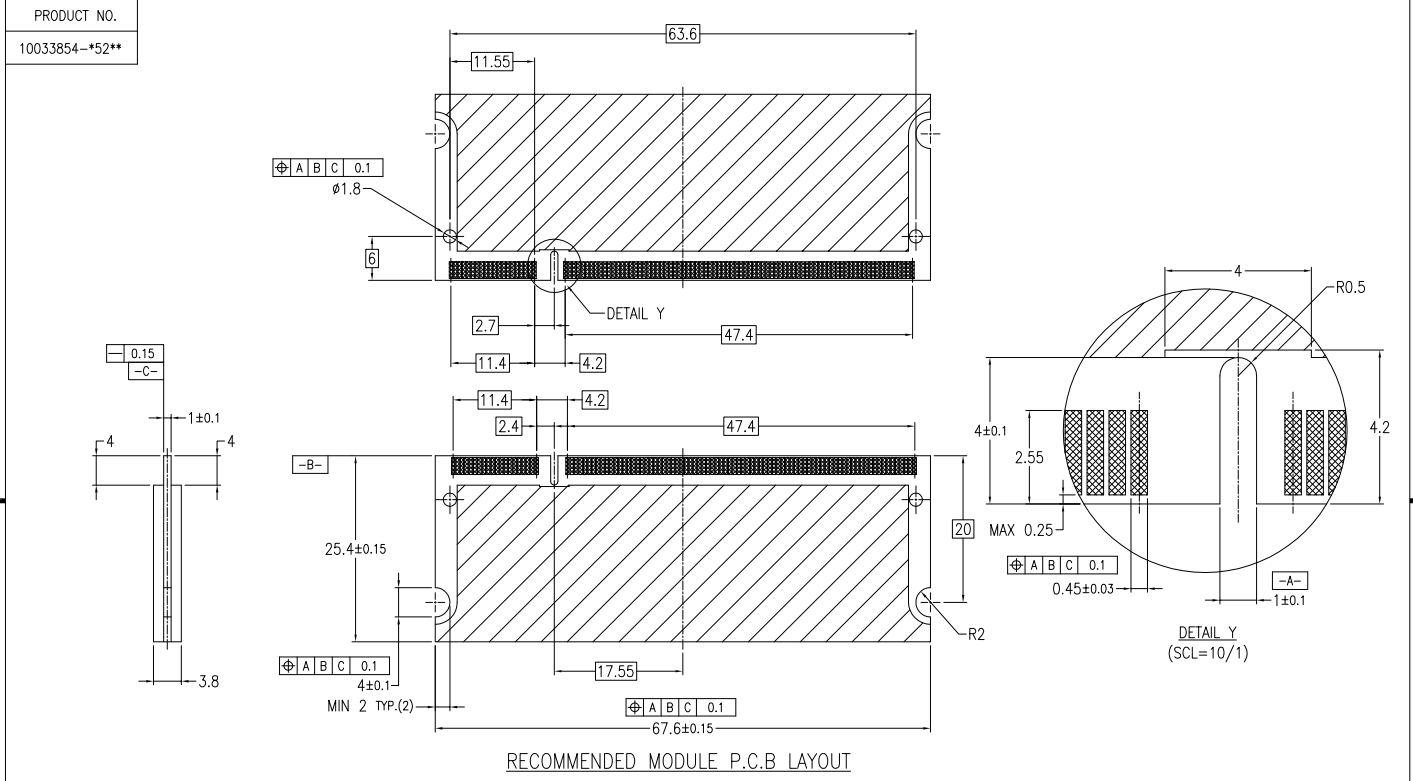
**PDM: Rev:D**

STATUS **Released**

Printed: Jul 28, 2010

Tous droits strictement réservés. Reproduction ou communication o des tiers interdite sous quelque forme que ce soit sans autorisation écrite préalable. Propriété de c FCI. Droits de reproduction FCI.

All rights strictly reserved. Reproduction or issue to third parties in any form whatever is not permitted without written authority from the proprietor. Property of FCI. Copyright FCI.



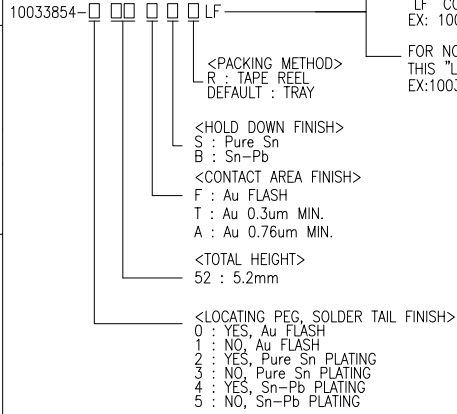
RECOMMENDED MODULE P.C.B LAYOUT

mat'l. code				tolerances unless otherwise specified		CUSTOMER COPY		FCI www.fciconnect.com	
ltr	ecn no	dr	date	linear	.X ± 0.20	projection	title		
D					.XX ± 0.10		DDR II 0.6 mm PITCH 200 POS. REVERSE TYPE ASS'Y		
				angles	0° ± 5°	MM	product family	50UF SO-DIMM	code
		dr	M.Hosegawa	6/28/04		scale	size	10033854	JP
		enr	M.Hosegawa	6/28/04		2:1	dwg no		sheet
		chr							3 of
		appd							
sheet index	revision sheet								

Tous droits strictement réservés. Reproduction ou communication o des tiers interdite sous quelque forme que ce soit sans autorisation écrite préalable. Propriété de c FCI. Droits de reproduction FCI.

All rights strictly reserved. Reproduction or issue to third parties in any form whatever is not permitted without written authority from the propriety of FCI. Copyright FCI.

PRODUCT NO.	LOCATING PEG	TERMINAL CONTACT AREA FINISH	HOLD DOWN FINISH	SOLDER TAIL FINISH
10033854-052FSLF	YES			
10033854-152FSLF	NO	Au FLASH		
10033854-052TSLF	YES		PURE Sn PLATING	
10033854-152TSLF	NO	Au 0.3um MIN.		
10033854-052ASLF	YES			Au FLASH
10033854-152ASLF	NO	Au 0.76um MIN.		
10033854-052FB	YES			
10033854-152FB	NO	Au FLASH		
10033854-052TB	YES		Sn-Pb PLATING	
10033854-152TB	NO	Au 0.3um MIN.		
10033854-052AB	YES			
10033853-152AB	NO	Au 0.76um MIN.		
10033854-252FSLF	YES			
10033854-352FSLF	NO	Au FLASH		
10033854-252TSLF	YES		PURE Sn PLATING	
10033854-352TSLF	NO	Au 0.3um MIN.		
10033854-252ASLF	YES			Pure Sn PLATING
10033854-352ASLF	NO	Au 0.76um MIN.		
10033854-252FB	YES			
10033854-352FB	NO	Au FLASH		
10033854-252TB	YES		Sn-Pb PLATING	
10033854-352TB	NO	Au 0.3um MIN.		
10033854-252AB	YES			
10033854-352AB	NO	Au 0.76um MIN.		
10033854-452FS	YES			
10033854-552FS	NO	Au FLASH		
10033854-452TS	YES		PURE Sn PLATING	
10033854-552TS	NO	Au 0.3um MIN.		
10033854-452AS	YES			
10033854-552AS	NO	Au 0.76um MIN.		
10033854-452FB	YES			
10033854-552FB	NO	Au FLASH		
10033854-452TB	YES		Sn-Pb PLATING	
10033854-552TB	NO	Au 0.3um MIN.		
10033854-452AB	YES			
10033854-552AB	NO	Au 0.76um MIN.		



For Rohs OPTIONS:  
TAIL PLATING CODE MUST BE 0~3.  
HOLD DOWN PLATING CODE MUST BE "S".  
"LF" CODE IS EXIST IN THE END.  
EX: 10033854-252TSLF

FOR NOT Rohs COMPATIBLE:  
THIS "LF" CODE IS "BLANK".  
EX:10033854-452TS

mat'l. code				tolerances unless otherwise specified		CUSTOMER COPY		FCI	
ltr	ecn no	dr	date	linear	.X ± 0.20	projection	www.fciconnect.com		
D					.XX ± 0.10		title		
				angles	0° ±5°		DDR II 0.6 mm PITCH 200 POS. REVERSE TYPE ASS'Y		
				dr	M.Hosegawa 6/28/04	MM	product family	50UF SO-DIMM	code
				enrg	M.Hosegawa 6/28/04	scale	size	dwg no	JP
				chr		2:1	B	10033854	sheet
				appd					4 of
sheet index	revision sheet								