



Distributor of FCI: Excellent Integrated System Limited

Datasheet of 55917-501LF - Connector Receptacle USB TypeA, Stacked 2.0 8 Position
Through Hole, Right Angle, Horizontal

Contact us: sales@integrated-circuit.com Website: www.integrated-circuit.com

Excellent Integrated System Limited

Stocking Distributor

Click to view price, real time Inventory, Delivery & Lifecycle Information:

[FCI](#)

[55917-501LF](#)

For any questions, you can email us directly:

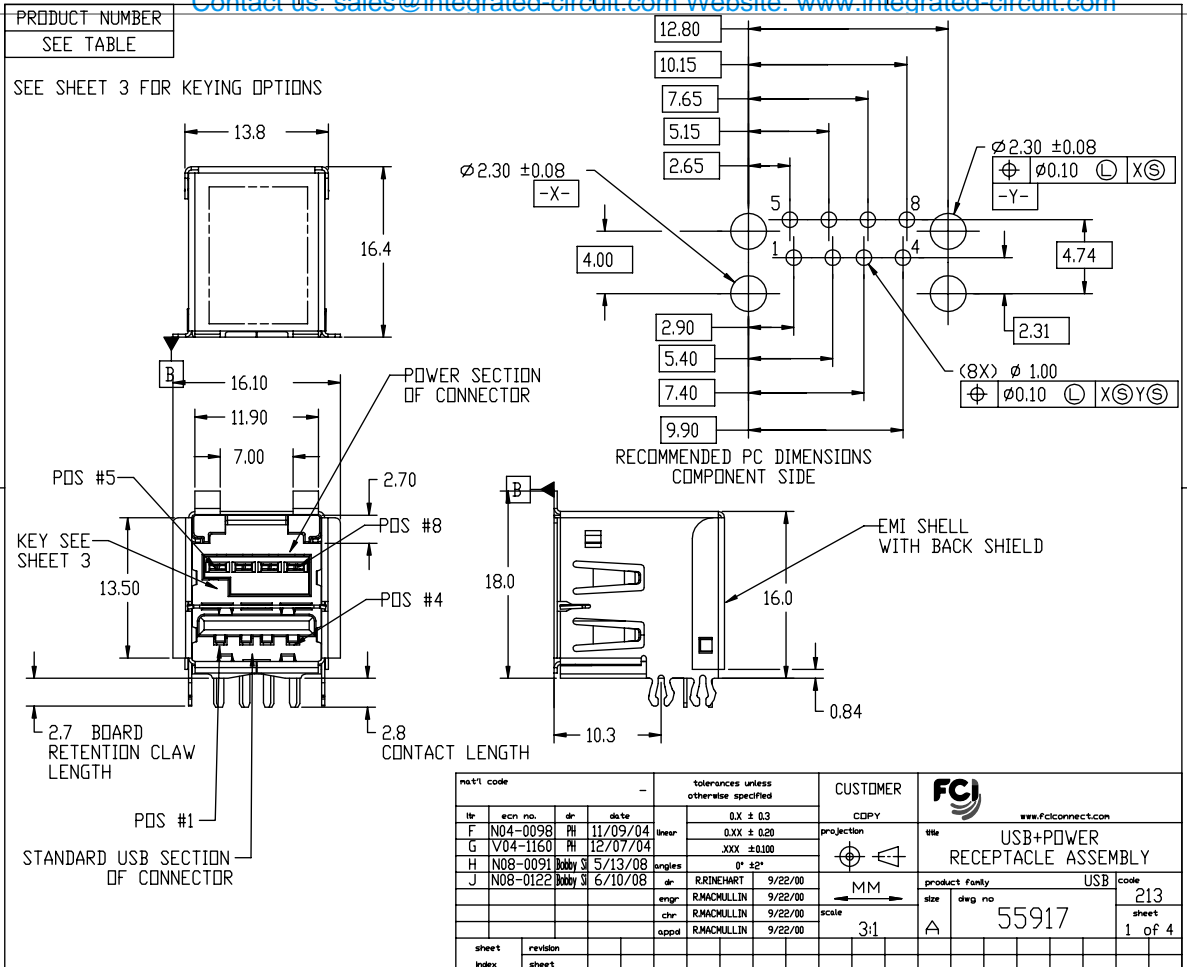
sales@integrated-circuit.com

Contact us: sales@integrated-circuit.com Website: www.integrated-circuit.com

Tous droits réservés. Toute réimpression, reproduction ou communication sans autorisation écrite de la propriété de FCI. Droits de reproduction FCI.



All rights strictly reserved. Reproduction or issue to third parties in any form or by any means without written authority from the proprietor. Property of FCI. Copyright FCI.



part code		tolerances unless otherwise specified		CUSTOMER	
tr	ecr no.	dr	date	linear	0.X ± 0.3
F	N04-0098	PH	11/09/04	0.XX ± 0.20	0.1X ± 0.10
G	V04-1160	PH	12/07/04	XXX ± 0.100	0.1 ± 0.05
H	N08-0091	PH	5/13/08	angles	0° ± 2°
J	N08-0122	PH	6/10/08	dr	RRINEHART 9/22/00
				enr	RMACHULLIN 9/22/00
				chr	RMACHULLIN 9/22/00
				appd	RMACHULLIN 9/22/00
sheet	revision			scale	MM
index	sheet			size	A
				scale	3:1

CUSTOMER		www.fciconnect.com	
projection	COPY	product family	USB
title	USB+POWER RECEPTACLE ASSEMBLY	code	213
size	A	size no	55917
sheet	1 of 4	code	22526

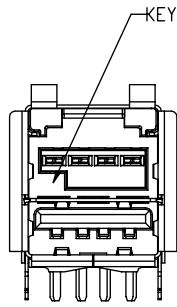
Contact us: sales@integrated-circuit.com Website: www.integrated-circuit.com

PRODUCT NUMBER
SEE TABLE

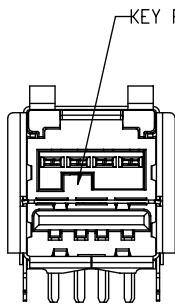
Tous droits réservés. Toute réimpression, reproduction ou communication sans autorisation écrite de la propriété de FCI. Droits de reproduction FCI.



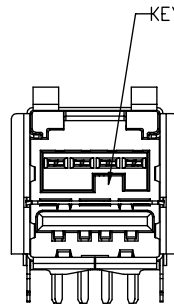
All rights strictly reserved. Reproduction or issue to third parties in any form or by any means is not permitted without written authority from the proprietor. Property of FCI. Copyright FCI.



55917-10X
KEY POSITION 1



55917-20X
KEY POSITION 2



55917-30X
KEY POSITION 3

ABOVE ASSEMBLIES ARE SHOWN ONLY FOR
KEY INFORMATION, FOR ASSEMBLY INFORMATION
AND DIMENSIONS SEE PREVIOUS SHEETS

part code		-		tolerances unless otherwise specified		CUSTOMER				www.fciconnect.com	
tr	ecr no.	dr	date	linear	0.X ± 0.3	COPY		projection		title	
J					0.XX ± 0.20					USB+POWER RECEPTACLE ASSEMBLY	
				angles	XXX ± 0.100					product family	
				dr	0° ± 2°			MM		USB	
				engr	RRINHART 9/22/00			size		code	
				chr	RMACHULLIN 9/22/00			A		213	
				appd	RMACHULLIN 9/22/00	scale		3:1		55917	
sheet	revision									sheet	
index	sheet									2	

1 2

Pro/E

3

cage code 22526

4

PDM: Rev:J

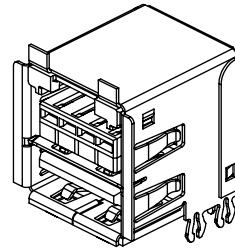
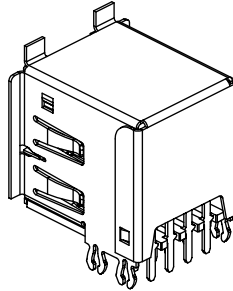
STATUS **Released**

Printed: Jul 28, 2010

Contact us: sales@integrated-circuit.com Website: www.integrated-circuit.com

NOTES:

1. MATERIAL:
HOUSINGS: HIGH TEMP ENGINEERING PLASTIC UL 94V-0
SHIELDS: HIGH STRENGTH COPPER ALLOY, PLATING: TIN/LEAD OR TIN OVER NICKEL
TERMINALS: HIGH STRENGTH COPPER ALLOY, PLATING: NICKEL UNDERPLATING
CONTACT AREA; 30 GXT MIN
TAIL AREA; TIN/LEAD OR MATTE TIN
2. DIMENSIONS AND TOLERANCES ARE IN ACCORDANCE WITH
ASME Y14.5M, 1994.
3. USB SECTION CONFORMS TO USB 2.0 SPECIFICATION.
4. MATING SEQUENCE WHEN MATED WITH USB+POWER PLUG
PRODUCT NUMBER 74233-XXX
5. CURRENT RATING IS 1.5 AMP PER CONTACT FOR THE STANDARD USB SECTION AND 3 OR 5 AMPS
PER CONTACT FOR THE POWER SECTION WITH ALL CONTACTS POWER (SEE PART NUMBER TABLE), SEE GS-12-130
FOR PRODUCT TEST AND PERFORMANCE INFORMATION.
6. P/N'S WITH SUFFIX 'LF' ARE LEAD FREE P/N'S
7. FOR LEAD FREE P/N, THE PRODUCT MEET EUROPEAN UNION DIRECTIVES AND OTHER COUNTRY
REGULATION AS DESCRIBED IN GS-22-008
8. THE HOUSING WILL WITHSTAND EXPOSURE TO 260°C PEAK TEMPERATURE FOR 40 SECONDS IN A
CONVECTION, INFRARED OR VAPOR PHASE REFLOW OVEN.
9. THIS PRODUCT IS MADE UNDER LICENSE OF IBM U.S. PATENT NO. 6334793



CONTACT NUMBER	PRODUCT DASH NUMBER 55917-			
	-10X/50XLF	-20X/60XLF	-30X/70XLF	MATING SEQ.
1	VCC	VCC	VCC	2
2	- DATA	- DATA	- DATA	3
3	+ DATA	+ DATA	+ DATA	3
4	GROUND	GROUND	GROUND	2
5	12V GROUND	24V GROUND	5V GROUND	2
6	12V	24V	5V	3
7	12V	24V	5V	3
8	12V GROUND	24V GROUND	5V GROUND	2
SHELL	SHIELD	SHIELD	SHIELD	1

mat'l code		-		tolerances unless otherwise specified		CUSTOMER		FCI	
tr	ecr no.	dr	date	linear	0.X ± 0.3	COPY		www.fciconnect.com	
J					0.XX ± 0.20	projection		title	
					XXX ± 0.100			USB+POWER RECEPTACLE ASSEMBLY	
				angles	0° ± 2°			product family	
				dr	RRINEHART 9/22/00	MM		USB	
				engr	RMACMULLIN 9/22/00	scale		code	
				chr	RMACMULLIN 9/22/00	1:1		213	
				appd	RMACMULLIN 9/22/00			sheet	
sheet	revision							3	
index	sheet							4	

Tous droits réservés. Reproduction ou communication à des fins commerciales sans autorisation écrite de la propriété de FCI. Droits de reproduction FCI.



All rights strictly reserved. Reproduction or communication to any other person is not permitted without written authority from the proprietor. Property of FCI. Copyright FCI.

1 | 2

Pro/E

3 |

cage code 22526

4

PDM: Rev:J STATUS **Released**

Printed: Jul 28, 2010

Contact us: sales@integrated-circuit.com Website: www.integrated-circuit.com

Tous droits réservés. Toute réimpression, reproduction ou communication sans autorisation écrite de la propriété de FCI. Droits de reproduction FCI.



All rights strictly reserved. Reproduction or issue to third parties in any form or by any means without written authority from the proprietor. Property of FCI. Copyright FCI.

PRODUCT NUMBER	DESCRIPTION	VOLTAGE	HOUSING COLOR	CURRENT RATING	REMARK
55917-100	RECPT. ASS'Y. KEY POSITION 1	12V	BLACK	3 AMPS	NON LEAD FREE PART,NOT AVAILABLE
55917-500LF	RECPT. ASS'Y. KEY POSITION 1	12V	BLACK	3 AMPS	LEAD FREE PART, SUBSTITUTE OF 55917-100
55917-800LF	RECPT. ASS'Y. KEY POSITION 1	12V	BLACK	5 AMPS	LEAD FREE PART, SUBSTITUTE OF 55917-500LF
55917-101	RECPT. ASS'Y. KEY POSITION 1	12V	TEAL	3 AMPS	NON LEAD FREE PART,NOT AVAILABLE
55917-501LF	RECPT. ASS'Y. KEY POSITION 1	12V	TEAL	3 AMPS	LEAD FREE PART, SUBSTITUTE OF 55917-101
55917-801LF	RECPT. ASS'Y. KEY POSITION 1	12V	TEAL	5 AMPS	LEAD FREE PART, SUBSTITUTE OF 55917-501LF
55917-200	RECPT. ASS'Y. KEY POSITION 2	24V	BLACK	3 AMPS	NON LEAD FREE PART,NOT AVAILABLE
55917-600LF	RECPT. ASS'Y. KEY POSITION 2	24V	BLACK	3 AMPS	LEAD FREE PART, SUBSTITUTE OF 55917-200
55917-000LF	RECPT. ASS'Y. KEY POSITION 2	24V	BLACK	5 AMPS	LEAD FREE PART, SUBSTITUTE OF 55917-600LF
55917-201	RECPT. ASS'Y. KEY POSITION 2	24V	RED	3 AMPS	NON LEAD FREE PART,NOT AVAILABLE
55917-601LF	RECPT. ASS'Y. KEY POSITION 2	24V	RED	3 AMPS	LEAD FREE PART, SUBSTITUTE OF 55917-201
55917-001LF	RECPT. ASS'Y. KEY POSITION 2	24V	RED	5 AMPS	LEAD FREE PART, SUBSTITUTE OF 55917-601LF
55917-300	RECPT. ASS'Y. KEY POSITION 3	5V	NATURAL	3 AMPS	NON LEAD FREE PART,NOT AVAILABLE
55917-700LF	RECPT. ASS'Y. KEY POSITION 3	5V	NATURAL	3 AMPS	LEAD FREE PART, SUBSTITUTE OF 55917-300
55917-900LF	RECPT. ASS'Y. KEY POSITION 3	5V	NATURAL	5 AMPS	LEAD FREE PART, SUBSTITUTE OF 55917-700LF

not1 code		-		tolerances unless otherwise specified		CUSTOMER		FCI	
tr	ecr no.	dr	date	linear	0.X ± 0.3	COPY		www.fciconnect.com	
J					0.XX ± 0.20	projection		title	
					.XXX ± 0.100			USB+POWER RECEPTACLE ASSEMBLY	
				angles	0° ± 2°			product family	
				dr	RRINHART 9/22/00	scale		USB	
				enr	RMACHULLIN 9/22/00	1:1		code	
				chr	RMACHULLIN 9/22/00	A		213	
				appd	RMACHULLIN 9/22/00			sheet	
sheet	revision							4	
index	sheet								

1 | 2

Pro/E

3 |

cage code 22526

4

PDM: Rev:J

STATUS **Released**

Printed: Jul 28, 2010