

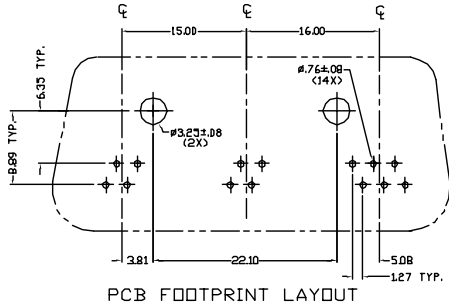
## Excellent Integrated System Limited

Stocking Distributor

Click to view price, real time Inventory, Delivery & Lifecycle Information:

[FCI](#)  
[FT658160LF](#)

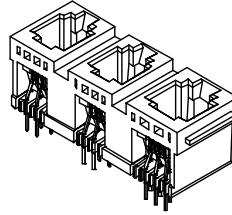
For any questions, you can email us directly:  
[sales@integrated-circuit.com](mailto:sales@integrated-circuit.com)



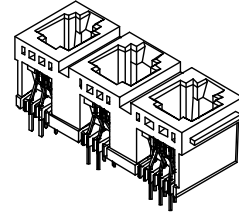
PCB FOOTPRINT LAYOUT

CPC	DIMENSION					
	'A'	'B'	'C'	'D'	'E'	'F'
FT600541	2.41	3.82	11.18	3.81	3.05	5.59
FT600541LF	2.41	3.82	11.18	3.81	3.05	5.59
FT658160	2.41	3.82	11.18	3.81	3.05	5.59
FT658160LF	2.41	3.82	11.18	3.81	3.05	5.59
FT684947	2.41	2.81	13.21	2.79	4.06	6.69
FT684947LF	2.41	2.81	13.21	2.79	4.06	6.69

CPC	POSITIONS LOADED			PACKAGING
	JACK A	JACK B	JACK C	
FT600541	ALL	ALL	DEC304.C5	TUBE
FT600541LF	ALL	ALL	DEC304.C5	TUBE
FT658160	ALL	ALL	ALL	TUBE
FT658160LF	ALL	ALL	ALL	TUBE
FT684947	ALL	DEC304.C5	DEC304.C5	TUBE
FT684947LF	ALL	DEC304.C5	DEC304.C5	TUBE



600541 & 658160 SERIES ONLY



684947 SERIE

- LEAD FREE SOLDER TAIL PLATING 2um(80uin)  
 MIN MATTE TIN OVER 1.27um(50uin) MIN NICKEL UNDERPLATE.
- THE JACKS WERE REPLACED BY 'FG' OR 'FT' DEPENDING OF PACKAGING METHOD (TUBE/GPAX).
  - THIS PRODUCT COVERED BY PRODUCT SPEC, GS-12-083.
  - MATES WITH FCC PART 68 PLUGS  
 4/4,4/4,6/6 FULLY LOADED - TOP ENTRY  
 4/4,4/4,4/6 SELECT LOADED - TOP ENTRY  
 4/4,4/6,4/6 SELECT LOADED - TOP ENTRY  
 PRESS-FIT (STANDARD) RETENTION PEGS
  - THE HOUSING WILL WITHSTAND EXPOSURE TO 260°C PEAK TEMPERATURE FOR 5 SECONDS IN A WAVE SOLDER APPLICATION WITH A 1.60mm MIN THICK CIRCUIT BOARD. SLIGHT DEFORMATION MAY OCCUR FOR THE DIAMOND PEGS AT 260-265° C WHICH WILL NOT AFFECT THE FUNCTION OF THE PRODUCT.
  - PACKAGING OF LEAD FREE PRODUCTS MEETS LABELING AND PACKAGING SPECIFICATION GS-14-920.
  - LEAD FREE PRODUCTS MEET EUROPEAN UNION DIRECTIVES AND OTHER COUNTRY REGULATIONS AS DESCRIBED IN GS-22-008.

NOTES:

- REGULATORY APPROVALS:  
 \* RECOGNIZED TO U.S. AND CANADIAN REQUIREMENTS UNDER THE COMPONENT RECOGNITION PROGRAM OF Underwriters Laboratories Inc.  
 \* CERTIFIED BY THE Canadian Standard Association.
- INSIDE CAVITIES ARE CONFORMED WITH FCC RULES PART 68, SUBPART "F".
- THESE DIMENSIONS APPLY OVER ENTIRE PROTRUDING HEIGHT OF THE TERMINAL.
- HOUSING MATERIAL: HIGH TEMP. THERMOPLASTIC, COLOR - BLACK, UL94V-0.
- CONTACT MATERIAL: PHOSPHOR BRONZE  
 MATING AREA PLATING: Au OVER Ni  
 SOLDER AREA PLATING: Sn/Pb OVER Ni  
 EXCEPT FOR PART NUMBER WITH LF ON END.

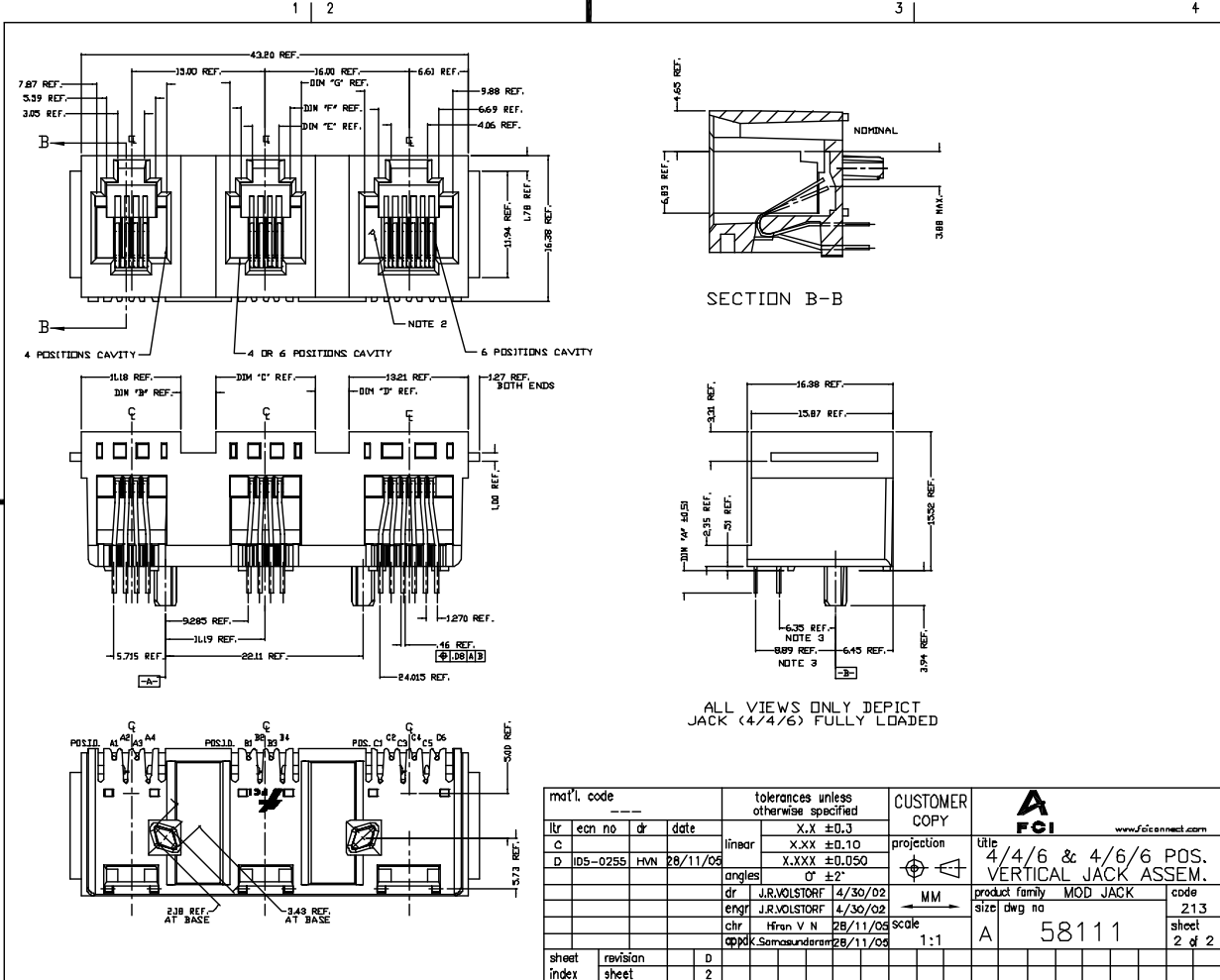
mat'l. code		tolerances unless otherwise specified		CUSTOMER COPY	www.fciconnect.com
ltr	ecn no	dr	date	linear	
A	V20906	JRV	5/10/02		X.XX ±0.10
B	V04-0323	DAI	5/17/04		X.XXX ±0.050
C	V05-0420	VS	10/5/05	angles	0° ±2°
D	ID5-0255	HVN	28/11/08	dr	J.R.VOLSTORF 4/30/02
				engr	J.R.VOLSTORF 4/30/02
				chr	Hfran V N 11/28/05
				appk	Somosundersen 1/28/05
sheet index	revision sheet	D D	1 2	scale	1:1

Tous droits réservés. Toute réimpression ou utilisation non autorisée sans la permission écrite de la FCI est formellement interdite. Toute réimpression ou utilisation non autorisée sans la permission écrite de la FCI est formellement interdite.

All rights reserved. Reproduction or use without the written permission of FCI is strictly prohibited.

Tous droits réservés. Toute réimpression, reproduction ou communication sans autorisation écrite de FCI, constitue une violation de la propriété intellectuelle de FCI. Toute réimpression sans autorisation écrite de FCI, constitue une violation de la propriété intellectuelle de FCI.

All rights reserved. Any reprinting, reproduction or communication without written authority from the proprietor, constitutes a violation of the intellectual property of FCI. Copyright © FCI.



SECTION B-B

ALL VIEWS ONLY DEPICT JACK (4/4/6) FULLY LOADED

mat'l. code		tolerances unless otherwise specified		CUSTOMER COPY		FCI www.fciconnect.com	
l/r	ech no	dr	date	linear	X.X ±0.3	projection	title
C					X.XX ±0.10		4/4/6 & 4/6/6 POS. VERTICAL JACK ASSEM.
D	ID5-0255	HVN	28/11/05	angles	X.XXX ±0.050		product family MOD JACK
					0° ±2°		code 21.3
				dr	J.R.VOLSTORF 4/30/02	MM	size
				engr	J.R.VOLSTORF 4/30/02	1:1	dwg no
				chr	Hfran V N 28/11/05		sheet 2 of 2
				appx	K.Somasundaram 28/11/05		
sheet	revision	D					
index	sheet	2					

ACAD