

## Excellent Integrated System Limited

Stocking Distributor

Click to view price, real time Inventory, Delivery & Lifecycle Information:

[FCI](#)  
[76357-301LF](#)

For any questions, you can email us directly:  
[sales@integrated-circuit.com](mailto:sales@integrated-circuit.com)

PRODUCT NUMBER  
76357-YXXLF

WHEN NEEDED, SUFFIX LETTER "LF"  
INDICATES THE PRODUCT IS RoHS  
COMPATIBLE, SEE NOTE 3

01: AWG 22-30  
11: AWG 20

**PLATING CODE**

3= 0.76µm GOLD ON CONTACT AREA.  
3.81µm TIN-LEAD ON TAIL.  
4= 5µm TIN-LEAD ON CONTACT AREA.  
3.81µm TIN-LEAD ON TAIL.

WHEN SUFFIX "LF" IS REQUIRED, 2µm MIN MATTE  
TIN OVER 1.27 MIN Ni IS SUPPLIED INSTEAD OF SnPb.

**NOTES:**

- 1 - TERMINAL MATERIAL: PHOSPHOR BRONZE.
- 2 - PRODUCT PACKED IN PLASTIC BOX (1000/BOX).
- 3 - RoHS COMPATIBLE PRODUCT SPECIFICATIONS

**a - PLATING:**

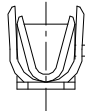
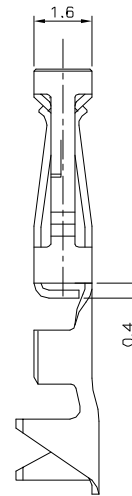
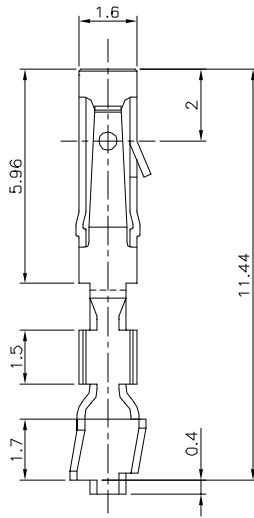
- "LF" MEANS THE PRODUCT IS LEAD-FREE,  
2µm MINIMUM MATTE TIN OVER 1.27µm  
MINIMUM NICKEL UNDERPLATE.

**b - LABELING:**

- MEETS PACKAGING SPECS AS PER GS-14-920

**c - LEGAL STATEMENT: SEE GS-22-008**

THE PRODUCT IS NOT INTENDED TO BE EXPOSED TO A



WIRE DIMENSION	
AWG	OUTSIDE INSULATION DIA.
20	1.30-1.65
22-30	0.90-1.50

mat'l. code		surface		tolerance		projection		product family	
		ISO 1302		ISO 466 ISO 1181		mm		DUBOX	
ltr ecn no dr date		tolerances unless otherwise specified		angles linear		scale 10:1		title	
D 10759 - 88.04.05								CtW CONTACT	
E F00155 DLE 00.03.16								LOOSE PIECE	
F F10103 GCO 01.01.02								dwg no sheet 1 of 1 size	
G F04-0373 DLE 04.11.19 dr D LEGRAND 00.03.16								76357 A3	
H F05-0286 DLE 05.11.07 engr P NIZZI 00.03.16								type CUSTOMER Drawing	
J F06-0215 DLE 06.06.30 chr JF NOTTEAU 00.03.16									
K F06-0237 DLE 06.07.13 appd PNZ 00.03.16									
sheet revision									
index sheet									