

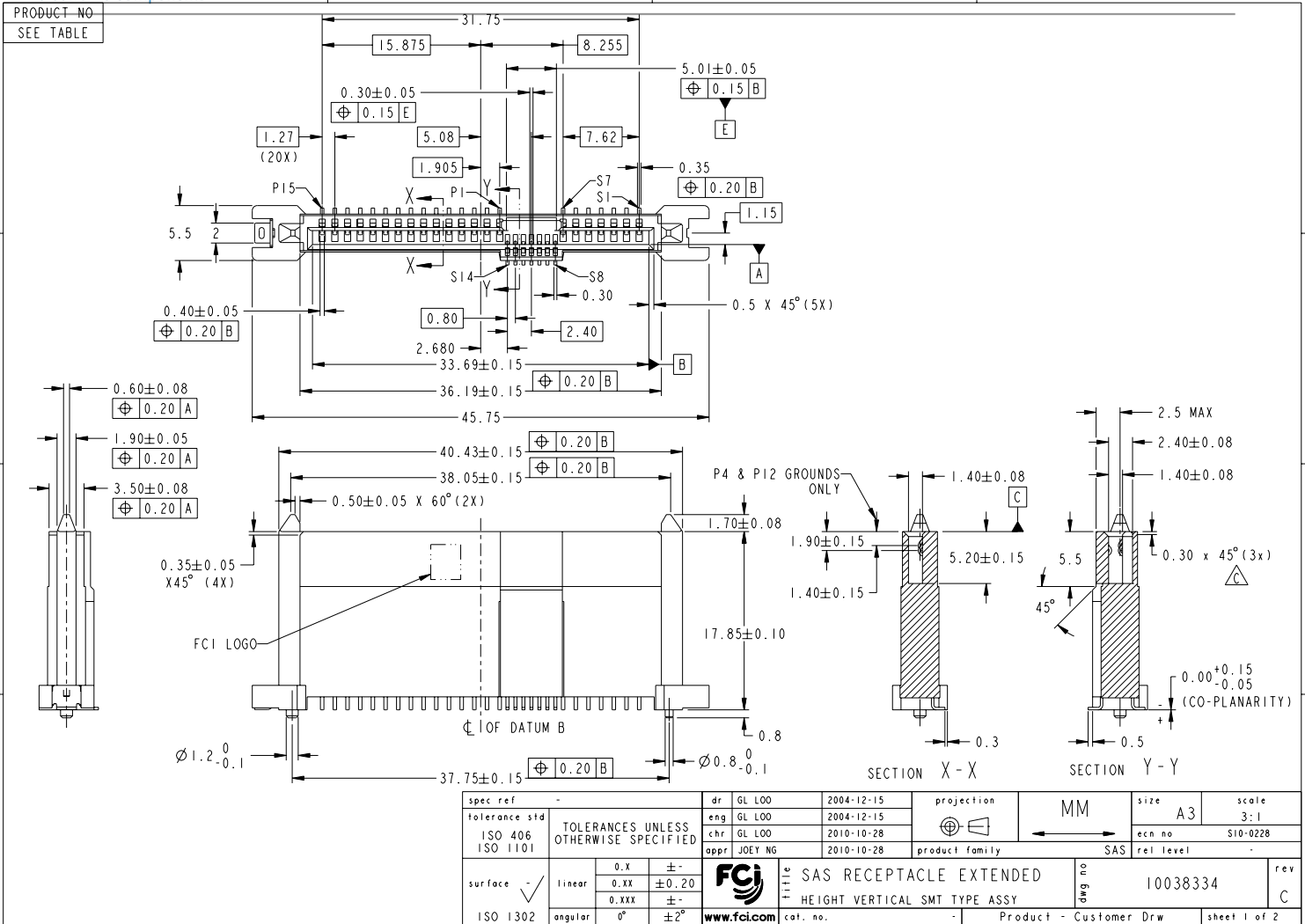
Excellent Integrated System Limited

Stocking Distributor

Click to view price, real time Inventory, Delivery & Lifecycle Information:

[FCI](#)
[10038334-001LF](#)

For any questions, you can email us directly:
sales@integrated-circuit.com



Copyright FCI.

Print File - REC C - 2009-04-09

2

3

PDS: Rev :C

STATUS:Released

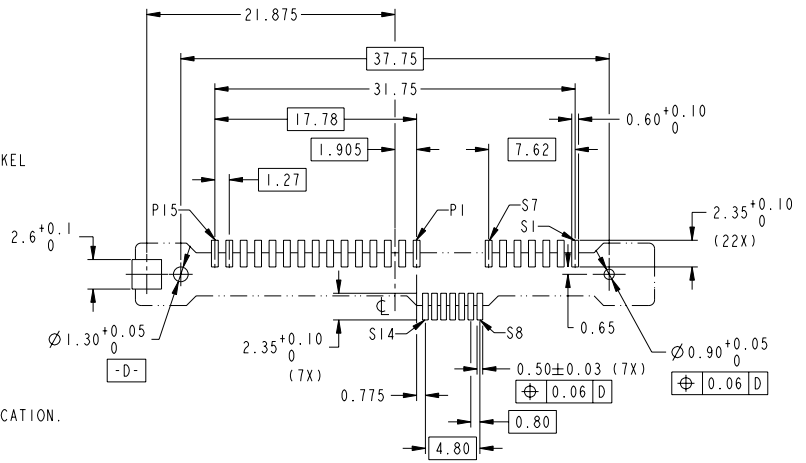
Printed: Nov 01, 2011

PRODUCT NO	REMARK
10038334-001LF	NOTE ⑥ & ⑦

NOTES:

1. MATERIAL :
 - 1) HOUSING : HIGH TEMP THERMOPLASTIC, UL 94V-0.
 - 2) COLOR : BLACK
 - 3) TERMINAL : COPPER ALLOY
 - 3) HOLD DOWN : COPPER ALLOY
2. FINISH :
 - 1) TERMINAL : 30μ" Au PLATING (CONTACT POINT) OVER 50μ" NICKEL
 - 2) SOLDER TAIL : 100μ" MIN Sn OVER 50μ" NICKEL
 - 3) HOLD DOWN : 100μ" MIN Sn OVER 50μ" NICKEL
3. PER SFF REV 1.1
4. THE STD PACKAGING IS IN TRAY
5. THE HOUSING WILL WITHSTAND EXPOSURE TO 260°C PEAK TEMPERATURE FOR 10 SECONDS IN A CONVECTION, INFRA-RED OR VAPOR PHASE REFLOW OVEN.

- ⑥ THIS PRODUCT MEETS EUROPEAN UNION DIRECTIVES AND OTHER COUNTRY REGULATIONS AS DESCRIBED IN GS-22-008.
- ⑦ PART NUMBERS ENDING IN "LF" MEANS FOR NOTE 6 LEAD FREE IDENTIFICATION. P/N XXXXXXXX-XXXLF IS EQUIVALENT TO PREVIOUS P/N XXXXXXXX-XXX.
- ⑧ A SYMBOL WILL BE NEXT TO ANY DIMENSION, VIEW, OR NOTE WHICH HAS BEEN MODIFIED WITH THE CURRENT DRAWING REVISION.



RECOMMENDED PCB LAYOUT

spec ref	-	dr	GL L00	2004-12-15	projection	MM	size	A3	scale	3:1		
tolerance std	ISO 406 ISO 1101	eng	GL L00	2004-12-15		←	ecn no	S10-0228	rel level	-		
TOLERANCES UNLESS OTHERWISE SPECIFIED		chr	GL L00	2010-10-28							product family	SAS
surface	linear	appr	JOEY NG	2010-10-28	www.fci.com		title	SAS RECEPTACLE EXTENDED HEIGHT VERTICAL SMT TYPE ASSY	dwg no	10038334	rev	C
ISO 1302	angular	0°	±2°	cat. no.		Product - Customer Drw		sheet 2 of 2				

Print Date - REC C - 2009-04-09

2

3

PDS: Rev :C

STATUS:Released

Printed: Nov 01, 2011