

Excellent Integrated System Limited

Stocking Distributor

Click to view price, real time Inventory, Delivery & Lifecycle Information:

[FCI](#)

[51860-001LF](#)

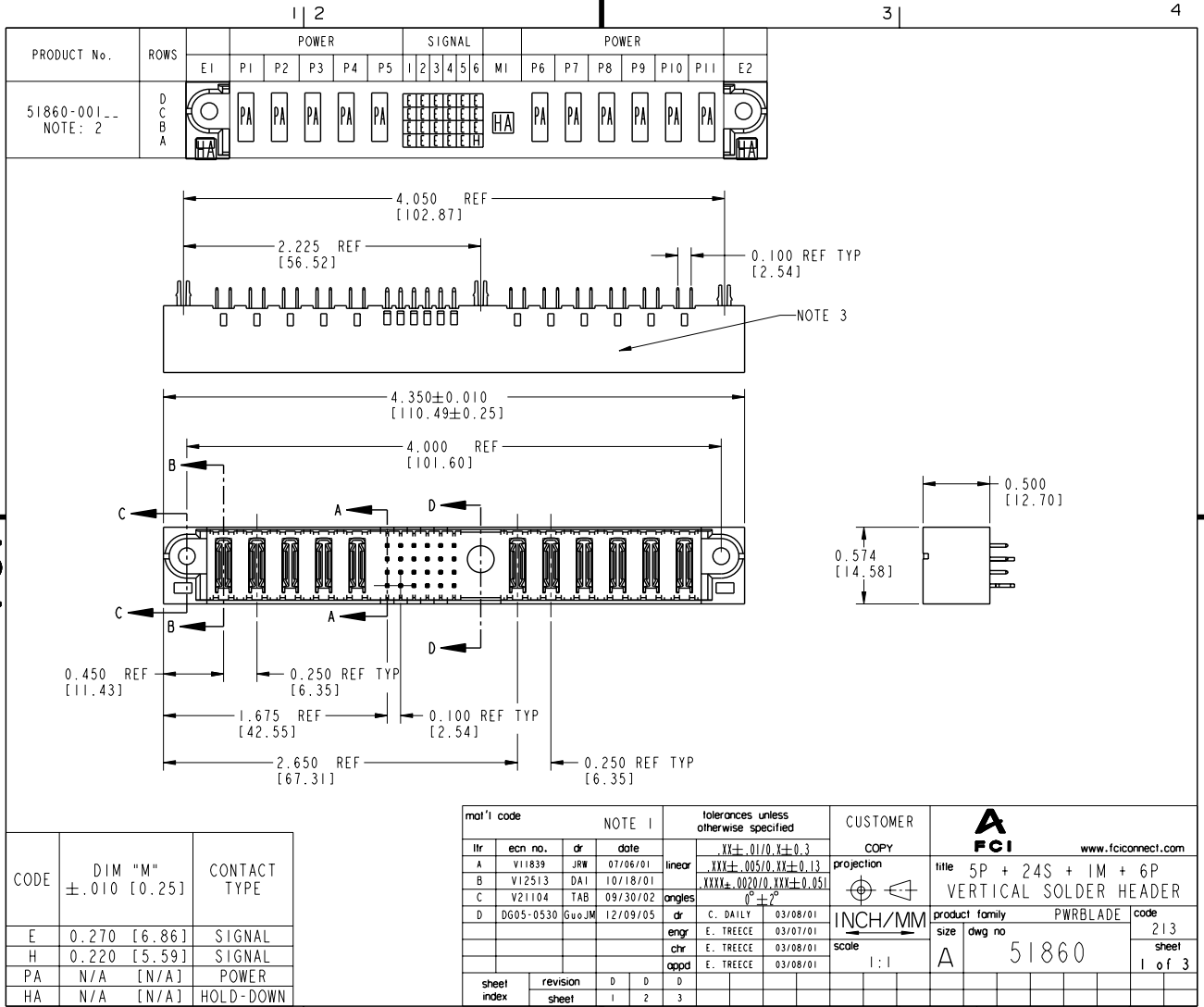
For any questions, you can email us directly:

sales@integrated-circuit.com

Tous droits strictement réservés. Reproduction ou communication, o des liens interdite sous quelque forme que ce soit sans autorisation écrite du propriétaire. Propriété de c FCI. Droits de reproduction FCI.

FCI

All rights strictly reserved. Reproduction or issue to third parties in any form whatever is not permitted without written authority from the proprietor. Property of FCI. Copyright FCI.



Pro/E

cage code 22526

PDM: Rev:D

STATUS: Released

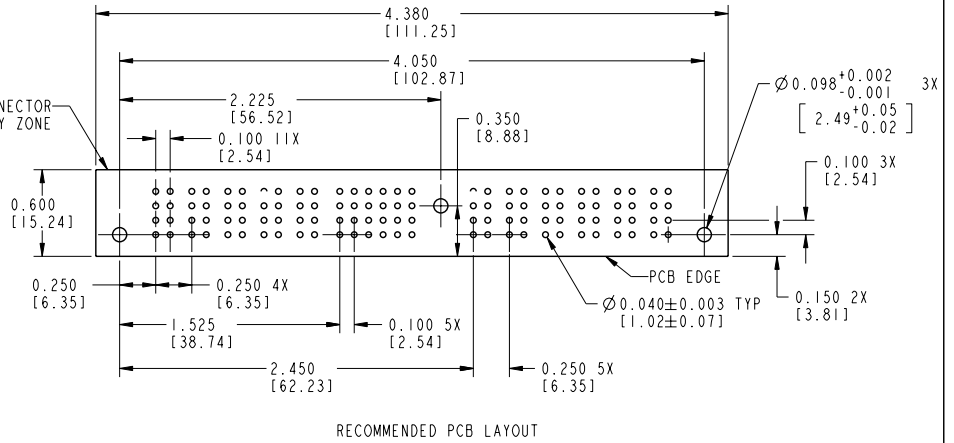
Printed: Aug 11, 2007

Tous droits strictement réservés. Reproduction ou communication, o des liens intermédiaire sous quelque forme que ce soit sans autorisation écrite du propriétaire. Propriété de c FCI. Droits de reproduction FCI.

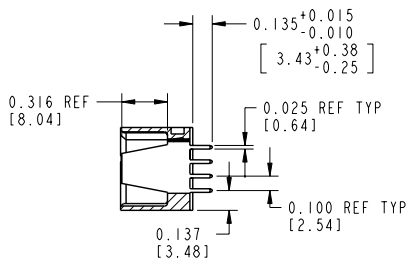
All rights strictly reserved. Reproduction or issue to third parties in any form whatever is not permitted without written authority from the proprietor. Property of FCI. Copyright FCI.

PRODUCT NUMBER
51860-001--
NOTE: 2

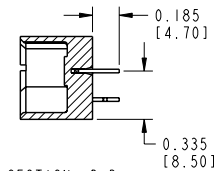
MECHANICAL CONNECTOR
STAY-AWAY ZONE



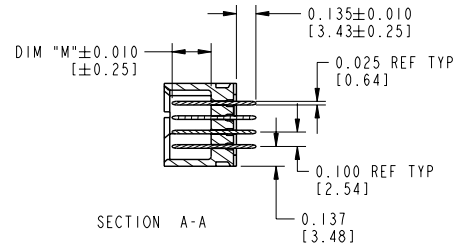
RECOMMENDED PCB LAYOUT



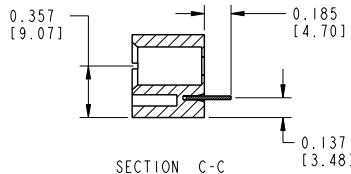
SECTION B-B



SECTION D-D



SECTION A-A



SECTION C-C

mat'l code		NOTE 1		tolerances unless otherwise specified		CUSTOMER	
lir	ecn no.	dr	date	linear	XX±.01/0.X±0.3	COPY	FCI www.fciconnect.com
D				linear	.XXX±.005/0.XX±0.13	projection	
				angles	.XXXX±.002/0.XX±0.051	INCH/MM	product family PWRBLADE
		dr			0°±2°	scale	code 213
		engr				1:1	sheet 2
		chr					
		appd					
sheet index	revision sheet						

Pro/E

cage code 22526

PDM: Rev:D

STATUS:Released

Printed: Aug 11, 2007

Tous droits strictement réservés. Reproduction ou communication, o des tiers interdite sous peine de sanctions pénales et/ou civiles. Toute réimpression sans autorisation écrite du propriétaire. Propriété de e FCI. Droits de reproduction FCI.

FCI

All rights strictly reserved. Reproduction or issue to third parties in any form whatever is not permitted without written authority from the proprietor. Property of FCI. Copyright FCI.

	1 2	3	4
PRODUCT NUMBER			
51860-001-- NOTE: 2			
CONNECTOR NOTES:			
1. HOUSING MATERIAL: UL 94 V-0 GLASS FILLED HIGH TEMP THERMOPLASTIC POWER CONTACT MATERIAL: COPPER ALLOY SIGNAL CONTACT MATERIAL: COPPER ALLOY			
2. PLATING:			
51860-001	Singal Pin: 30u"/0.76um Au OVER 50u"/1.27um Ni ON THE CONTACT AREA. AND 100u"/2.54um SnPb PLATING OVER 50u"/1.27um Ni ON THE TERMINATION SECTION. Power Pin: 30u"/0.76um Au OVER 50u"/1.27um Ni ON THE CONTACT AREA, AND 100u"/2.54um SnPb PLATING OVER 50u"/1.27um Ni ON THE TERMINATION SECTION.		
51860-001LF	Singal Pin: 30u"/0.76um Au OVER 50u"/1.27um Ni ON THE CONTACT AREA. AND 78u"/2.00um Sn PLATING OVER 50u"/1.27um Ni ON THE TERMINATION SECTION. Power Pin: 30u"/0.76um Au OVER 50u"/1.27um Ni ON THE CONTACT AREA, AND 78u"/2.00um Sn PLATING OVER 50u"/1.27um Ni ON THE TERMINATION SECTION.		
PART NUMBER 51860-001LF MEETS EUROPEAN UNION DIRECTIVE AND OTHER ICOUNTRY REGULATIONS AS DESCRIBED IN GS-22-008.			
THE HOUSING WILL WITHSTAND EXPOSURE TO 260° PEAK TEMPERATURE FOR 10 SECONDS IN A WAVE SOLDER APPLICATION WITH A CIRCUIT BOARD.			
3. "MANUFACTURER'S" NAME, P/N, AND DATE CODE TO APPEAR ON THIS SURFACE			
4. PRODUCT SPECIFICATION GS-12-149			
5. DIMENSIONS AND TOLERANCES ARE IN ACCORDANCE WITH ASME Y14.5M, 1994 UNLESS OTHERWISE SPECIFIED.			
PCB NOTES:			
6. ALL DIMENSIONS ARE BASIC UNLESS OTHERWISE SPECIFIED.			
7. ALL THROUGH HOLES ARE LOCATED WITH A TRUE POSITION OF 0.004 [0.10]			
8. ALL HOLE DIAMETERS ARE FINISHED HOLE SIZE			
9. Ø0.098[2.41] THROUGH HOLES ARE UNPLATED.			
10. Ø0.0453±0.0010 [1.151±0.025] DRILLED HOLES PLATED WITH 0.0003 [0.008] MIN SnPb OVER 0.001 [0.03] TO 0.003 [0.08] Cu PLATING TO ACHIEVE A Ø0.040±0.003 [1.02±0.07] HOLE.			
mat'l code		NOTE 1	tolerances unless otherwise specified
lfr	ecn no.	dr	date
D			
			linear .XX±.01/0.X±0.3
			.XXX±.005/0.XX±0.13
			.XXXX±.0020/0.XXX±0.051
			angles 0° ± 2°
		dr	C. DAILY 03/08/01
		eng	E. TRECCE 03/07/01
		chr	E. TRECCE 03/08/01
		appd	E. TRECCE 03/08/01
sheet index	revision sheet		
		CUSTOMER	FCI www.fciconnect.com
		COPY	projection
		INCH/MM	scale 1:1
		product family	PWRBLADE
		code	213
		size	A
		dwg no	51860
		sheet	3
		code code	22526

1 | 2

Pro/E

3 |

code code

22526

4

PDM: Rev:D

STATUS: **Released**

Printed: Aug 11, 2007