

Excellent Integrated System Limited

Stocking Distributor

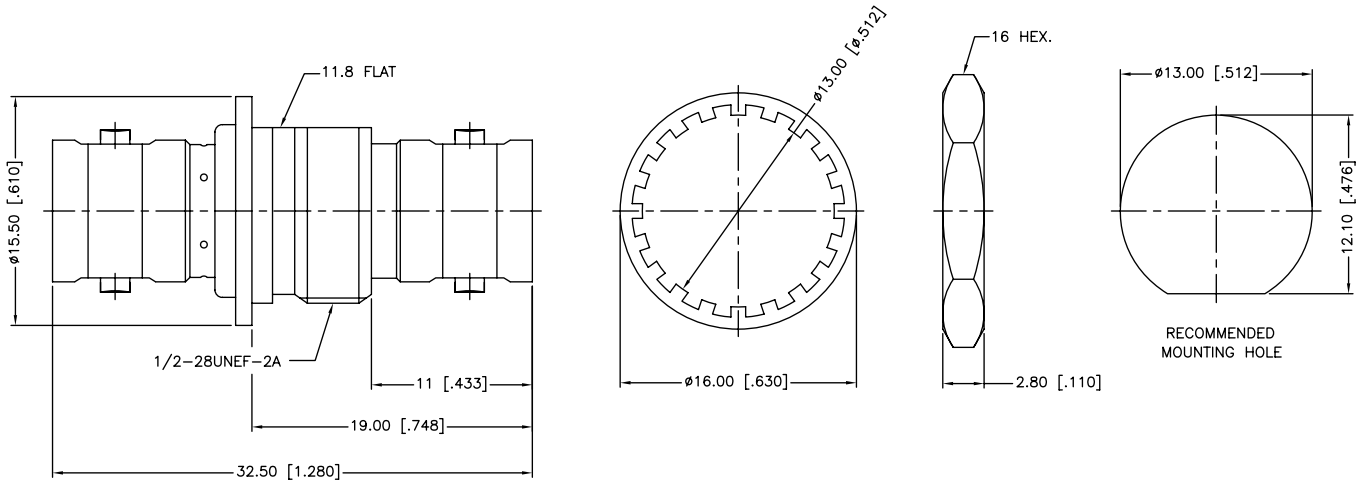
Click to view price, real time Inventory, Delivery & Lifecycle Information:

[Amphenol RF](#)
[112440](#)

For any questions, you can email us directly:

sales@integrated-circuit.com

REV.	DATE	ECR NO.	DESCRIPTION
A	01/07/04	XXXXXX	UPDATE DRAWING FORMAT
B	06/22/11	2186	ADD NOTE 1, 2, 3



1. IMPEDANCE: 75 OHMS
2. FREQUENCY RANGE: 0-1 GHz
3. MAX. PANEL THICKNESS: 4.5MM

UNLESS OTHERWISE SPECIFIED DIMENSIONS ARE IN MILLIMETERS. DIMENSIONS IN [] ARE IN INCHES AND FOR CUSTOMER REFERENCE ONLY.				APPROVALS	DATE	<h2 style="color: blue; margin: 0;">Amphenol Connex</h2>			
5	HEX NUT	BRASS	NICKEL	1	DRAWN		M.ZHANG	06/22/11	BNC FEMALE TO FEMALE BULKHEAD ISOLATED ADAPTOR - 75 OHM
4	LOCK WASHER	BRASS	NICKEL	1	CHECKED				
3	CONTACT PIN	PHOSPHOR BRONZE	GOLD	1	ISSUED				
2	INSULATOR	DELRIIN	NATURAL	1	SHEET	1 OF 1			
1	BODY	BRASS	NICKEL	1	CAD FILE C:/CONNEX/112440.DWG			PART NO. 112440	
UNLESS OTHERWISE SPECIFIED TOLERANCES FOR MILLIMETERS ARE: 0.5 - 8mm ± 0.20mm 8 - 30mm ± 0.40mm 30 - 120mm ± 0.50mm UNLESS OTHERWISE SPECIFIED TOLERANCES FOR INCHES ARE: .020 - .315 = ± 0.007" .315 - 1.180 = ± 0.015" 1.180 - 4.724 = ± 0.020" DO NOT SCALE DRAWING				DWG. NO. 112440.DWG			REV. B SIZE A SCALE NA		