

## **Excellent Integrated System Limited**

Stocking Distributor

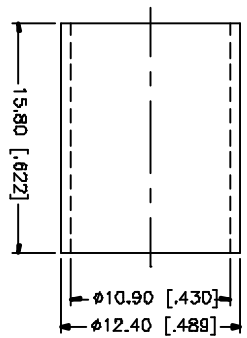
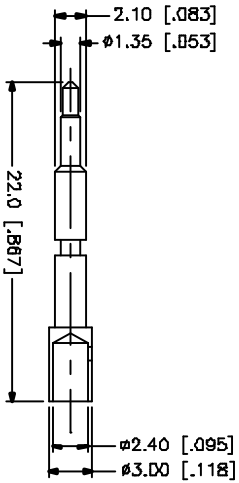
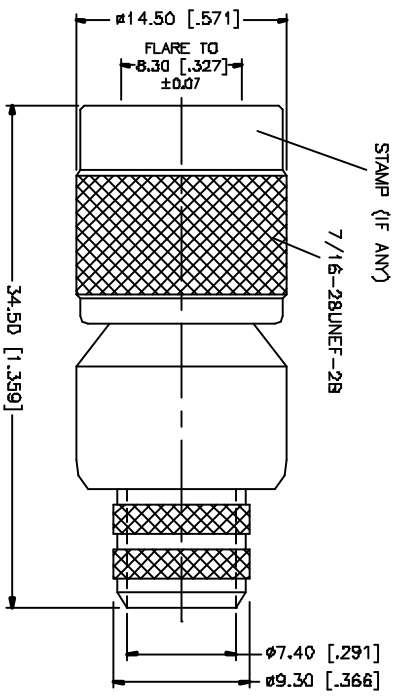
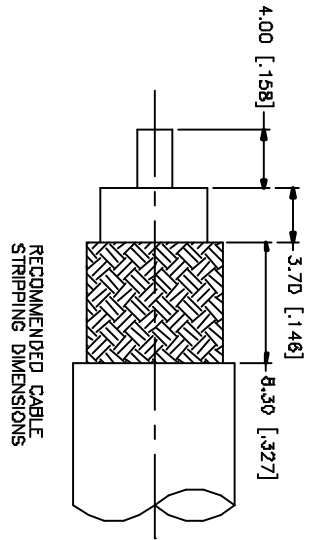
Click to view price, real time Inventory, Delivery & Lifecycle Information:

[Amphenol RF](#)  
[122394](#)

For any questions, you can email us directly:

[sales@integrated-circuit.com](mailto:sales@integrated-circuit.com)

REV.	DATE	DESCRIPTION
NC	05/27/97	INITIAL RELEASE
A	05/01/04	UPDATE DRAWING FORMAT



NOTE:  
 1. CRIMPED FERRULE  
 HEX CRIMP SIZE .429"  
 2. CRIMPED CONTACT PIN  
 HEX CRIMP SIZE .100"

REV.	DESCRIPTION	MATERIAL	FINISH	QTY
9				
8				
7				
6				
5				
4	FERRULE	COPPER	NICKEL	1
3	CONTACT PIN	BRASS	COLD NATURAL	1
2	INSULATOR	TEFLON	NATURAL	1
1	BODY	BRASS	NICKEL	1
	DESCRIPTION	MATERIAL	FINISH	QTY

UNLESS OTHERWISE SPECIFIED, MATERIALS AND DIMENSIONS ARE TO BE IN INCHES AND DECIMAL FRACTIONS THEREOF. DIMENSIONS ARE TO BE TAKEN FROM THE UNLESS OTHERWISE SPECIFIED.
TOLERANCES PER MILLIMETERS
0.5 - 3.0mm ± 0.20mm
3.0 - 12.0mm ± 0.50mm
UNLESS OTHERWISE SPECIFIED, DIMENSIONS FOR HOLE ARE:
.020 - .315 ± 0.007"
.315 - 1.180 ± 0.015"
1.180 - 4.124 ± 0.020"

APPROVALS	DATE
DRAWN G.R.S.	05/01/04
CHECKED	
ISSUED	
SHEET 1 OF 1	

CAD FILE	DWG. NO.	REV.	SIZE	SCALE
C:/122/122394.DWG	122394.DWG	A	A	NA

**Amphenol Connex**

TNC CRIMP PLUG  
 (FOR BELDEN 8/U, 213U)  
 122394