

Excellent Integrated System Limited

Stocking Distributor

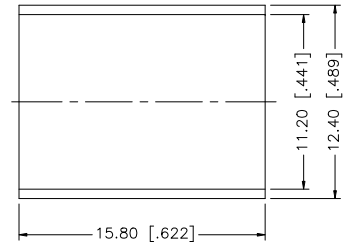
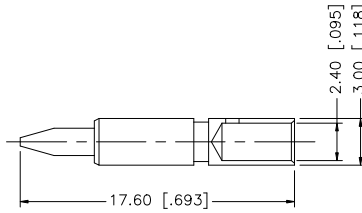
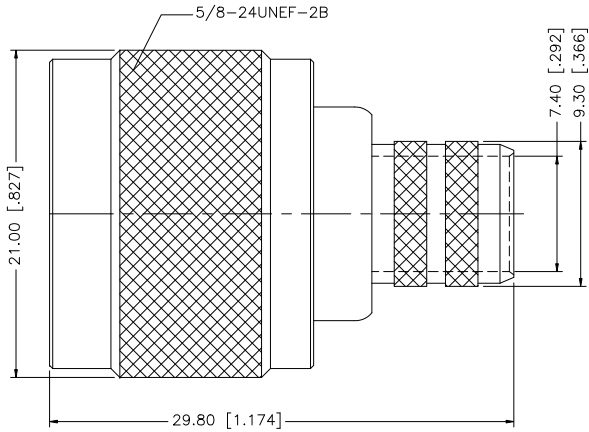
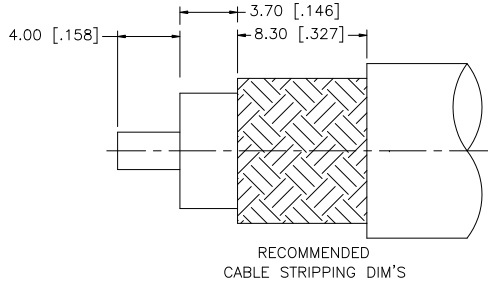
Click to view price, real time Inventory, Delivery & Lifecycle Information:

[Amphenol RF](#)
[172166](#)

For any questions, you can email us directly:

sales@integrated-circuit.com

| REV. | DATE | DESCRIPTION |
|------|----------|-----------------------------------|
| A | 01/30/04 | UPDATE DRAWING FORMAT |
| B | 05/22/05 | MODIFY PLATING SPEC |
| C | 07/08/07 | REVISE STRIPPING DIMS AND FERRULE |



NOTE:

1. CRIMPED FERRULE HEX CRIMP SIZE .429"
2. CRIMPED CONTACT PIN HEX CRIMP SIZE .100"

| | | | | APPROVALS | DATE | Amphenol Connex | | | | |
|---|-------------|--------|---------|--|--------|---------------------------------------|--|--------------------------|--------------------------|----------------------------|
| 8 | | | | DRAWN | G.R.S. | | | | | 07/08/07 |
| 7 | | | | CHECKED | | | | | | |
| 6 | | | | ISSUED | | | | | | |
| 5 | FERRULE | COPPER | NECOTE | 1 | | | | | | |
| 4 | CONTACT PIN | BRASS | GOLD | 1 | | | | | | |
| 3 | INSULATOR | TEFLON | NATURAL | 1 | | | | | | |
| 2 | BARREL | BRASS | NEXCOTE | 1 | | | | | | |
| 1 | BODY | BRASS | NEXCOTE | 1 | | | | | | |
| <small>UNLESS OTHERWISE SPECIFIED DIMENSIONS ARE IN MILLIMETERS. DIMENSIONS IN [] ARE IN INCHES AND FOR CUSTOMER REFERENCE ONLY.</small> <small>UNLESS OTHERWISE SPECIFIED TOLERANCES FOR MILLIMETERS ARE:</small> 0.5 - 8mm ± 0.20mm 8 - 30mm ± 0.40mm 30 - 120mm ± 0.50mm <small>UNLESS OTHERWISE SPECIFIED TOLERANCES FOR INCHES ARE:</small> .020 - .315 = ± 0.007" .315 - 1.180 = ± 0.015" 1.180 - 4.724 = ± 0.020" DO NOT SCALE DRAWING | | | | <small>CAD FILE</small> C:/172/172166.DWG | | <small>DWG. NO.</small> 172166.DWG | | <small>REV.</small> C | <small>SIZE</small> A | <small>SCALE</small> NA |