

Excellent Integrated System Limited

Stocking Distributor

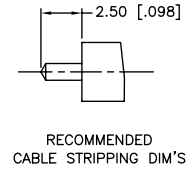
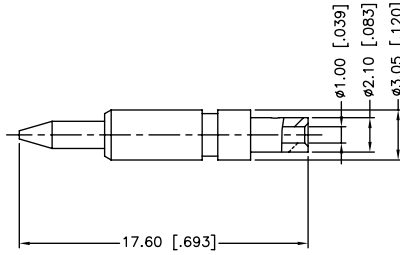
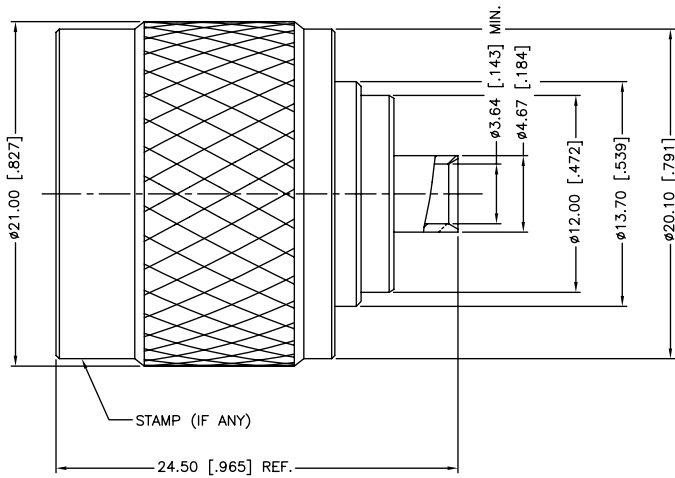
Click to view price, real time Inventory, Delivery & Lifecycle Information:

[Amphenol RF](#)
[172133](#)

For any questions, you can email us directly:

sales@integrated-circuit.com

REV.	DATE	ECR NO.	DESCRIPTION
A	04/31/03	-	UPDATE DRAWING FORMAT
B	05/06/10	2052	ADD THE MISSING DIMENSIONS TO THE DRAWING



NOTE:
 1. CRIMPED CONTACT PIN
 HEX. CRIMP SIZE .068"

UNLESS OTHERWISE SPECIFIED DIMENSIONS ARE IN MILLIMETERS. DIMENSIONS IN [] ARE IN INCHES AND FOR CUSTOMER REFERENCE ONLY.				APPROVALS	DATE	<h2 style="color: blue; margin: 0;">Amphenol Connex</h2>					
3	CONTACT PIN	BRASS	GOLD	1	DRAWN		M.ZHANG	05/06/10	N DIRECT SOLDER PLUG (FOR .141" SEMI-RIGID CABLE)		
2	INSULATOR	PTFE	NATURAL	1	CHECKED						
1	BODY	BRASS	NEXCOTE	1	ISSUED						
	DESCRIPTION	MATERIAL	FINISH	QTY	SHEET		1 OF 1				
<small>UNLESS OTHERWISE SPECIFIED TOLERANCES FOR MILLIMETERS ARE: 0.5 - 8mm ± 0.20mm 8 - 30mm ± 0.40mm 30 - 120mm ± 0.50mm</small> <small>UNLESS OTHERWISE SPECIFIED TOLERANCES FOR INCHES ARE: .020 - .315 = ± 0.007" .315 - 1.180 = ± 0.015" 1.180 - 4.724 = ± 0.020"</small> DO NOT SCALE DRAWING				CAD FILE C:/CONNEX/172133.DWG		PART NO. 172133					
				DWG. NO.	172133.DWG	REV.	B	SIZE	A	SCALE	NA