

Excellent Integrated System Limited

Stocking Distributor

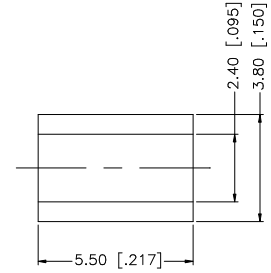
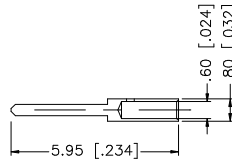
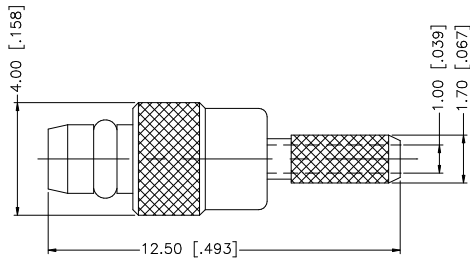
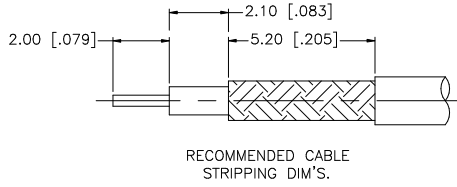
Click to view price, real time Inventory, Delivery & Lifecycle Information:

[Amphenol RF](#)
[262100](#)

For any questions, you can email us directly:

sales@integrated-circuit.com

REV.	DATE	DESCRIPTION
NC	05/06/99	INITIAL RELEASE
A	11/06/06	UPDATE DRAWING FORMAT



8				UNLESS OTHERWISE SPECIFIED DIMENSIONS ARE IN MILLIMETERS; DIMENSIONS IN [] ARE IN INCHES AND FOR CUSTOMER REFERENCE ONLY.	APPROVALS	DATE	Amphenol Connex
7				UNLESS OTHERWISE SPECIFIED TOLERANCES FOR MILLIMETERS ARE: 0.5 - 8mm ± 0.20mm 8 - 30mm ± 0.40mm 30 - 120mm ± 0.50mm	DRAWN C.R.S.	11/06/06	
6	FERRULE	COPPER	GOLD	1	CHECKED		PART NO. 262100
5	RETAINER RING	PHOS. BRONZE	GOLD	1	ISSUED		
4	BARREL	BRASS	GOLD	1	SHEET 1 OF 1		REV. A
3	CONTACT PIN	BRASS	GOLD	1	CAD FILE C:/262/262100.DWG		SIZE A
2	INSULATOR	TEFLON	NATURAL	1			SCALE NA
1	BODY	BRASS	GOLD	1			
	DESCRIPTION	MATERIAL	FINISH	QTY	DO NOT SCALE DRAWING		