

Excellent Integrated System Limited

Stocking Distributor

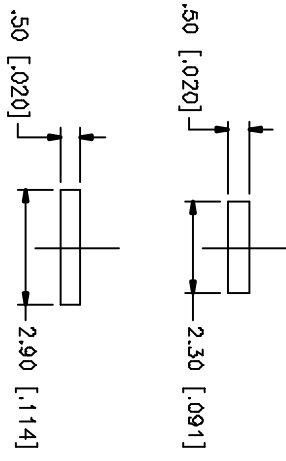
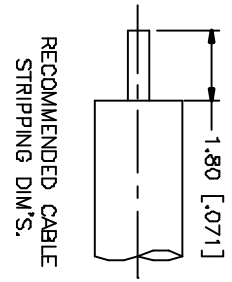
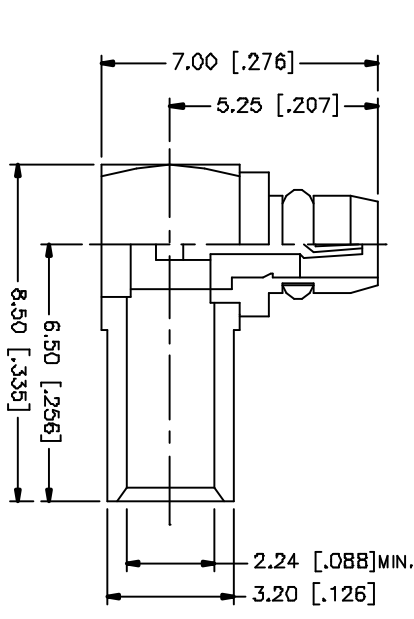
Click to view price, real time Inventory, Delivery & Lifecycle Information:

[Amphenol RF](#)
[262113](#)

For any questions, you can email us directly:

sales@integrated-circuit.com

REV.	DATE	DESCRIPTION
A	05/01/04	UPDATE DRAWING FORMAT



NOTE:
 1. CONTACT PIN TO SOLDER

QTY	FINISH	MATERIAL	DESCRIPTION
1	GOLD	BRASS	BODY
1	NATURAL	TEFLON	INSULATOR
1	GOLD	BRASS	CONTACT PIN
1	GOLD	BER. COPPER	RETAINER RING
1	NATURAL	TEFLON	INSULATOR
1	GOLD	BRASS	COVER

APPROVALS	DATE
DRAWN C.R.S.	05/01/04
CHECKED	
ISSUED	
BRIGT	1 OF 1

DO NOT SCALE DRAWING	UNLESS OTHERWISE SPECIFIED, DIMENSIONS ARE IN MILLIMETERS, DIMENSIONS IN INCHES ARE IN PARENTHESES. DIMENSIONS FOR PARTS ARE IN PARENTHESES. DIMENSIONS FOR MATERIALS ARE IN PARENTHESES. DIMENSIONS FOR FINISHES ARE IN PARENTHESES.
UNLESS OTHERWISE SPECIFIED, DIMENSIONS ARE IN MILLIMETERS, DIMENSIONS IN INCHES ARE IN PARENTHESES. DIMENSIONS FOR PARTS ARE IN PARENTHESES. DIMENSIONS FOR MATERIALS ARE IN PARENTHESES. DIMENSIONS FOR FINISHES ARE IN PARENTHESES.	

APPROVALS	DATE
DRAWN C.R.S.	05/01/04
CHECKED	
ISSUED	
BRIGT	1 OF 1

APPROVALS	DATE
DRAWN C.R.S.	05/01/04
CHECKED	
ISSUED	
BRIGT	1 OF 1

DESCRIPTION	MATERIAL	FINISH	QTY
COVER	BRASS	GOLD	1
INSULATOR	TEFLON	NATURAL	1
RETAINER RING	BER. COPPER	GOLD	1
CONTACT PIN	BRASS	GOLD	1
INSULATOR	TEFLON	NATURAL	1
BODY	BRASS	GOLD	1

DESCRIPTION	MATERIAL	FINISH	QTY
COVER	BRASS	GOLD	1
INSULATOR	TEFLON	NATURAL	1
RETAINER RING	BER. COPPER	GOLD	1
CONTACT PIN	BRASS	GOLD	1
INSULATOR	TEFLON	NATURAL	1
BODY	BRASS	GOLD	1

DESCRIPTION	MATERIAL	FINISH	QTY
COVER	BRASS	GOLD	1
INSULATOR	TEFLON	NATURAL	1
RETAINER RING	BER. COPPER	GOLD	1
CONTACT PIN	BRASS	GOLD	1
INSULATOR	TEFLON	NATURAL	1
BODY	BRASS	GOLD	1

Amphenol Connex

MMCX R/A SEMI-RIGID PLUG
 (FOR .085", .086")

262113

REV. A	DATE	DESCRIPTION
REV. A	05/01/04	UPDATE DRAWING FORMAT

REV. A	DATE	DESCRIPTION
REV. A	05/01/04	UPDATE DRAWING FORMAT

REV. A	DATE	DESCRIPTION
REV. A	05/01/04	UPDATE DRAWING FORMAT

REV. A	DATE	DESCRIPTION
REV. A	05/01/04	UPDATE DRAWING FORMAT