

Excellent Integrated System Limited

Stocking Distributor

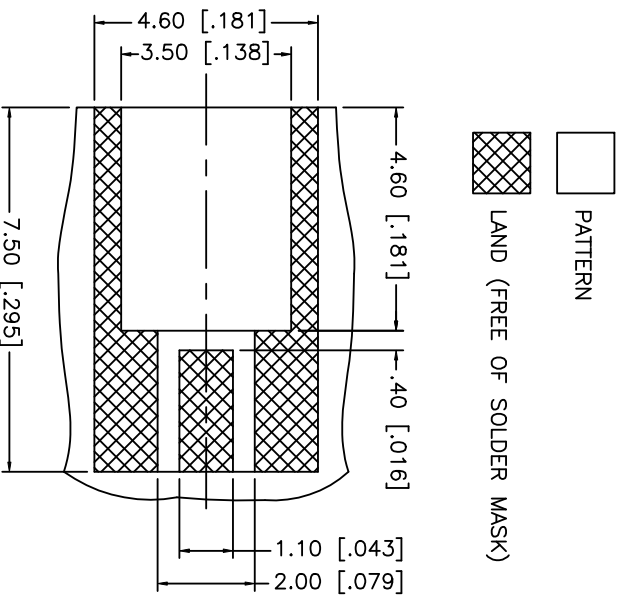
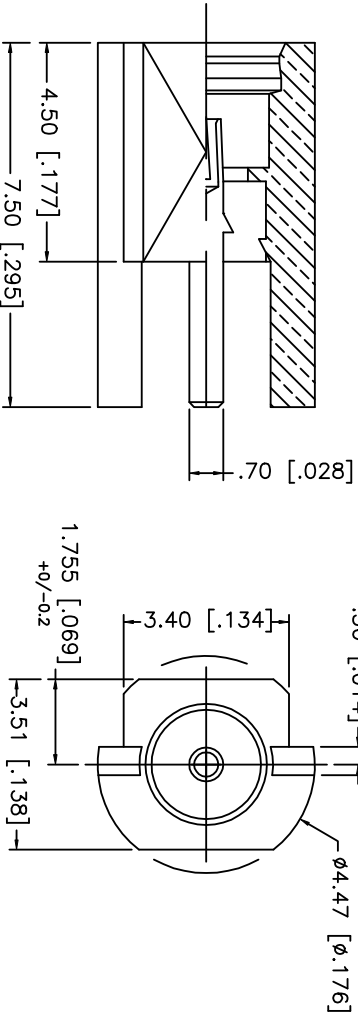
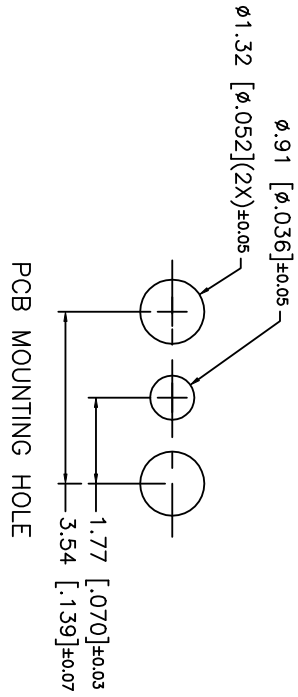
Click to view price, real time Inventory, Delivery & Lifecycle Information:

[Amphenol RF](#)
[262107](#)

For any questions, you can email us directly:

sales@integrated-circuit.com

REV.	DATE	DESCRIPTION
NC	08/29/02	INITIAL RELEASE



8																				
UNLESS OTHERWISE SPECIFIED DIMENSIONS ARE IN MILLIMETERS	APPROVALS		DATE																	
DIMENSIONS IN [] ARE IN INCHES FOR CUSTOMER REFERENCE ONLY	DRAWN G.R.S.		08/29/02																	
UNLESS OTHERWISE SPECIFIED TOLERANCES FOR INCHES ARE: .XXX = ± 0.005" .XX = ± 0.010" .X = ± 0.020"	CHECKED																			
DO NOT SCALE DRAWING	ISSUED																			
Amphenol - Connex CONNECTOR CORPORATION MMCX EDGE CARD JACK				TITLE																
SIZE A		FSCM NO. 99001		DWG. NO. 262107.DWG																
SCALE NA		PART NO. 262107		SHEET 1 OF 1																
DESCRIPTION		MATERIAL		FINISH																
1 BODY		BRASS		GOLD																
2 INSULATOR		TEFLON		NATURAL																
3 CONTACT PIN		BER. COPPER		GOLD																
4																				
5																				
6																				
7																				
8																				