

## **Excellent Integrated System Limited**

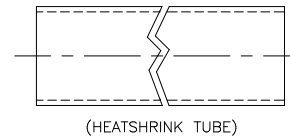
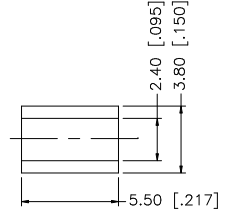
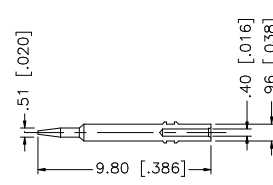
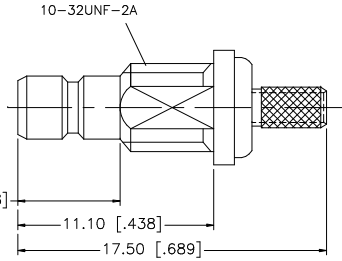
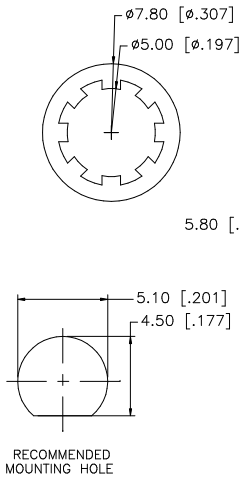
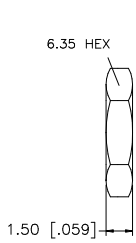
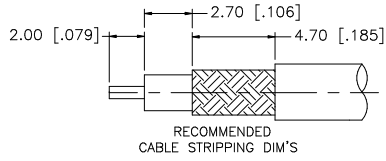
Stocking Distributor

Click to view price, real time Inventory, Delivery & Lifecycle Information:

[Amphenol RF](#)  
[142231](#)

For any questions, you can email us directly:  
[sales@integrated-circuit.com](mailto:sales@integrated-circuit.com)

REV.	DATE	DESCRIPTION
NC	09/07/99	INITIAL RELEASE
A	07/21/05	UPDATE DRAWING FORMAT



DESCRIPTION	MATERIAL	FINISH	QTY	UNLESS OTHERWISE SPECIFIED DIMENSIONS ARE IN MILLIMETERS. DIMENSIONS IN [ ] ARE IN INCHES AND FOR CUSTOMER REFERENCE ONLY.	APPROVALS	DATE	<b>Amphenol Connex</b> PART DESCRIPTION <b>SMB BULKHEAD CRIMP JACK</b> <b>(FOR RG-178B/U, 196A/U CABLE)</b>
8							
7	HEAT SHRINK TUBE		1		DRAWN	G.R.S.	07/21/05
6	FERRULE	COPPER	GOLD	1	CHECKED		
5	HEX NUT	BRASS	GOLD	1	ISSUED		
4	LOCK WASHER	BRASS	GOLD	1			
3	CONTACT PIN	BRASS	GOLD	1	SHEET	1 OF 1	
2	INSULATOR	TEFLON	NATURAL	1			PART NO.
1	BODY	BRASS	GOLD	1			142231
					CAD FILE	C:/142/142231.DWG	DWG. NO.
							1421231.DWG
							REV. A
							SIZE A
							SCALE NA

UNLESS OTHERWISE SPECIFIED DIMENSIONS ARE IN MILLIMETERS. DIMENSIONS IN [ ] ARE IN INCHES AND FOR CUSTOMER REFERENCE ONLY.

UNLESS OTHERWISE SPECIFIED TOLERANCES FOR MILLIMETERS ARE:  
 0.5 - 8mm ± 0.20mm  
 8 - 30mm ± 0.40mm  
 30 - 120mm ± 0.50mm

UNLESS OTHERWISE SPECIFIED TOLERANCES FOR INCHES ARE:  
 .020 - .315 = ± 0.007"  
 .315 - 1.180 = ± 0.015"  
 1.180 - 4.724 = ± 0.020"

DO NOT SCALE DRAWING