

## **Excellent Integrated System Limited**

Stocking Distributor

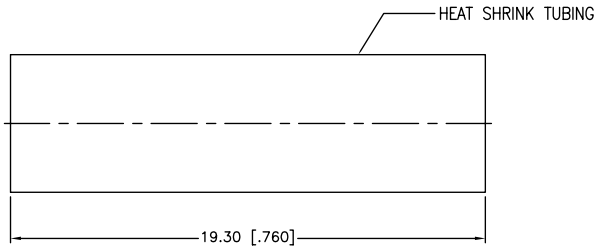
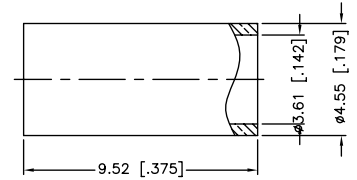
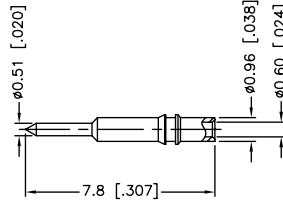
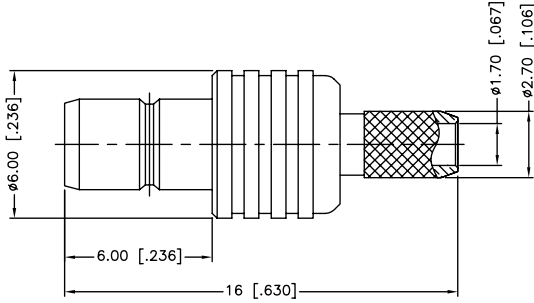
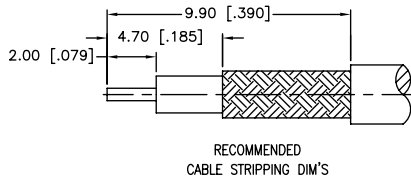
Click to view price, real time Inventory, Delivery & Lifecycle Information:

[Amphenol RF](#)  
[142190](#)

For any questions, you can email us directly:

[sales@integrated-circuit.com](mailto:sales@integrated-circuit.com)

REV.	DATE	ECR NO.	DESCRIPTION
NC	12/17/09	XXXXXX	INITIAL RELEASE



1. CRIMPED FERRULE  
HEX CRIMP SIZE .151"
2. CRIMPED CONTACT PIN  
SQ. CRIMP SIZE 0.7mm

DESCRIPTION	MATERIAL	FINISH	QTY	UNLESS OTHERWISE SPECIFIED DIMENSIONS ARE IN MILLIMETERS. DIMENSIONS IN [ ] ARE IN INCHES AND FOR CUSTOMER REFERENCE ONLY.	APPROVALS	DATE	PART DESCRIPTION							
9			1	UNLESS OTHERWISE SPECIFIED TOLERANCES FOR MILLIMETERS ARE: 0.5 - 8mm ± 0.20mm 8 - 30mm ± 0.40mm 30 - 120mm ± 0.50mm  UNLESS OTHERWISE SPECIFIED TOLERANCES FOR INCHES ARE: .020 - .315 = ± 0.007" .315 - 1.180 = ± 0.015" 1.180 - 4.724 = ± 0.020"	DRAWN	C.WANG	12/17/09	<b>Amphenol Connex</b>  <b>SMB CRIMP JACK</b> <b>(FOR RG-316U/D)</b>  PART NO. <b>142190</b>  DWG. NO. 142190.DWG						
8	HEAT SHRINK TUBING	BLACK	1		CHECKED									
7	FERRULE	COPPER	GOLD		1	ISSUED								
6	CONTACT PIN	BRASS	GOLD		1	SHEET	1 OF 1							
5	CONTACT PIN	BRASS	GOLD	1	CAD FILE		C:/CONNEX/142190.DWG		REV.	NC	SIZE	A	SCALE	NA
4	BARREL	BRASS	GOLD	1	DO NOT SCALE DRAWING									
3	INSULATOR	PTFE	NATURAL	1										
2	INSULATOR	PTFE	NATURAL	1										
1	BODY	BRASS	GOLD	1										