

Excellent Integrated System Limited

Stocking Distributor

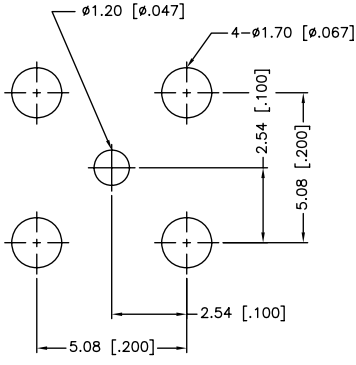
Click to view price, real time Inventory, Delivery & Lifecycle Information:

[Amphenol RF](#)
[142138](#)

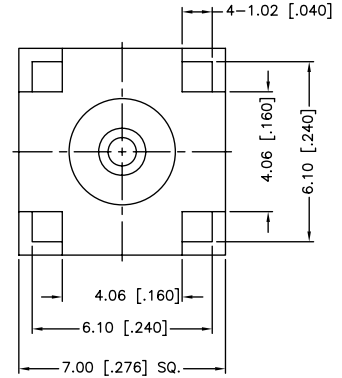
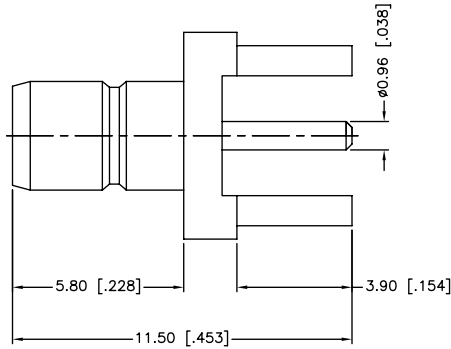
For any questions, you can email us directly:

sales@integrated-circuit.com

REV.	DATE	ECR NO.	DESCRIPTION
A	12/09/03	XXXXXX	UPDATE DRAWING FORMAT
B	11/21/11	2258	ADD NOTES



PCB MOUNTING HOLES



1. OPERATING TEMPERATURE RANGE: -65°C TO +165°C
2. MAX SHORT TERM TEMP FOR REFLOW: 260°C FOR ABOUT 10 SECONDS
3. 50 PCS OF THE CONNECTOR IN ITS OWN BAG

UNLESS OTHERWISE SPECIFIED DIMENSIONS ARE IN MILLIMETERS. DIMENSIONS IN [] ARE IN INCHES AND FOR CUSTOMER REFERENCE ONLY.				APPROVALS	DATE	<h1 style="color: blue; margin: 0;">Amphenol Connex</h1>	
3	CONTACT PIN	BRASS	GOLD	DRAWN	M.ZHANG		11/21/11
2	INSULATOR	PTFE	NATURAL	CHECKED			
1	BODY	BRASS	GOLD	ISSUED			
<small>UNLESS OTHERWISE SPECIFIED TOLERANCES FOR MILLIMETERS ARE: 0.5 - 8mm ± 0.20mm 8 - 30mm ± 0.40mm 30 - 120mm ± 0.50mm</small>				<small>UNLESS OTHERWISE SPECIFIED TOLERANCES FOR INCHES ARE: .020 - .315 = ± 0.007" .315 - 1.180 = ± 0.015" 1.180 - 4.724 = ± 0.020"</small>		PART DESCRIPTION SMB P.C. MOUNT JACK	
<small>UNLESS OTHERWISE SPECIFIED TOLERANCES FOR INCHES ARE: .020 - .315 = ± 0.007" .315 - 1.180 = ± 0.015" 1.180 - 4.724 = ± 0.020"</small>				SHEET 1 OF 1		PART NO. 142138	
DO NOT SCALE DRAWING				CAD FILE C:/CONNEX/142138.DWG		DWG. NO. 142138.DWG	
DESCRIPTION				REV. B		SIZE A	
MATERIAL				SCALE NA			
FINISH							
QTY							