



Excellent Integrated System Limited

Stocking Distributor

Click to view price, real time Inventory, Delivery & Lifecycle Information:

[Essentra Components \(formerly Richco, Inc.\)](#)
[HG-2](#)

For any questions, you can email us directly:
sales@integrated-circuit.com

PART NUMBER	"ID"	"H"	"P"	"OD"	"T"
HG-2	3.2 [.126]	4.8 [.190]	1.6 [.063]	8.0 [.315]	6.4 [.252]
HG-2.5	4.0 [.148]	6.4 [.252]	1.6 [.063]	9.5 [.374]	6.3 [.248]
HG-3	4.8 [.188]	7.7 [.305]	0.8 [.032]	10.9 [.430]	4.8 [.188]
HG-3.5	5.5 [.217]	8.0 [.315]	1.6 [.063]	10.9 [.430]	5.5 [.217]
HG-4	6.4 [.252]	9.5 [.374]	2.4 [.095]	14.2 [.559]	7.0 [.276]
HG-5	8.0 [.313]	10.9 [.430]	1.6 [.063]	14.3 [.562]	4.8 [.188]
HG-6	9.5 [.374]	12.5 [.492]	1.6 [.063]	17.0 [.669]	7.0 [.276]
HG-8	12.6 [.495]	16.8 [.660]	1.6 [.063]	21.5 [.846]	6.4 [.250]
HG-9	14.2 [.558]	17.1 [.675]	1.6 [.063]	22.2 [.875]	4.8 [.188]
HG-10	15.5 [.610]	18.8 [.742]	1.6 [.063]	22.2 [.875]	5.6 [.219]
HG-11	17.1 [.672]	18.7 [.735]	1.6 [.063]	23.7 [.933]	4.8 [.188]
HG-12	18.6 [.734]	24.8 [.976]	1.6 [.063]	31.3 [1.234]	8.0 [.313]
HG-14	21.8 [.860]	25.1 [.990]	1.6 [.063]	30.2 [1.188]	8.0 [.313]
HG-16	24.6 [.970]	31.5 [1.240]	1.6 [.063]	38.1 [1.500]	8.0 [.313]
HG-17	8.0 [.315]	11.0 [.433]	2.0 [.079]	16.0 [.630]	7.0 [.276]
HG-18	12.7 [.500]	19.0 [.748]	2.4 [.095]	24.0 [.945]	7.1 [.280]

REV.	MODIFICATION.	DATE	DRN
A	NEW DRAWING	22/12/95	RMB
02	ECN2005-043	06/04/05	OW
03	ECN2006-031	18/01/06	OW
04	ECN2006-092	06/06/06	TC
05	ECN2006-217	04/09/06	TC
06	ECN2007-013	15/01/07	SF
07	ECN2007-018	22/01/07	SF
08	ECN2007-055	28/03/07	SF
09	ECN2007-063	16/04/07	SF
10	CO2010068	26/02/08	SF
11	CO2010071	27/02/08	SF
12	CO2010653	13/05/09	SF

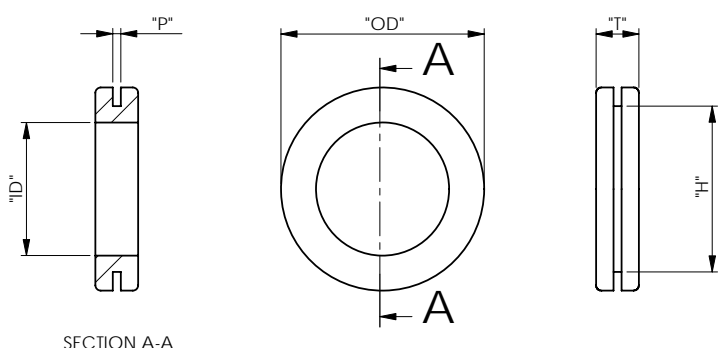


HG-3



ALL OTHER SIZES

NOTES
 1a) METRIC PRIMARY UNITS:mm
 1b) IMPERIAL SECONDARY UNITS: [inches]
 2) ALL RMS-262 PARTS (UL94-HB) ARE AVAILABLE IN RMS-263 (UL94-V0) BY SPECIAL ORDER
 3) PART AVAILABLE IN GREY BY SPECIAL ORDER. ADD GY TO PART NUMBER AS FOLLOWS: HG-2.5GY.



INFORMATION CONTAINED IN THIS DOCUMENT IS CONFIDENTIAL TO RICHCO INTERNATIONAL Co. Ltd. AND MAY NOT BE DISCLOSED OR REPRODUCED IN WHOLE OR PART WITHOUT THEIR WRITTEN CONSENT.

Richco

GENERAL TOLERANCE: FOR REFERENCE ONLY ±0.50 [0.02] UNLESS OTHERWISE STATED ANGULAR ±1°

THIRD ANGLE

MATERIAL:	RMS-262 TPE (see notes)	COLOUR:	BLACK
DESCRIPTION:	HG-X	PART No:	SEE TABLE
DRG No:	760-0001	NPR No:	N/A
DRN	OW	DATE	06/04/05
CHKD	NBr	DATE	08/04/05
SCALE	NTS	SHEET No.	1 OF 1

FORM No. 0145/03