

Excellent Integrated System Limited

Stocking Distributor

Click to view price, real time Inventory, Delivery & Lifecycle Information:

[TE Connectivity AMP Connectors](#)
[748366-1](#)

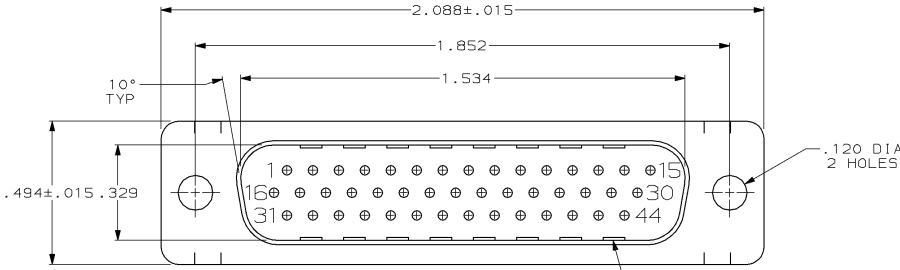
For any questions, you can email us directly:

sales@integrated-circuit.com

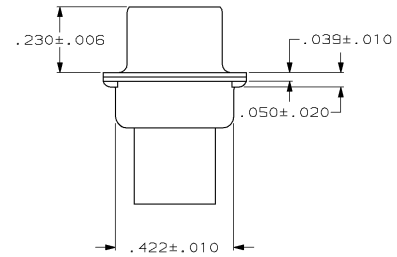
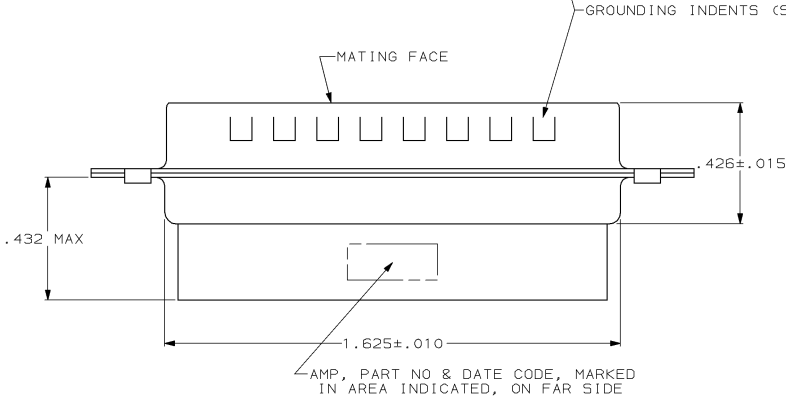
DRAWING MADE IN THIRD ANGLE PROJECTION

THIS DRAWING IS UNPUBLISHED. RELEASED FOR PUBLICATION
 © COPYRIGHT 19 BY AMP INCORPORATED, HARRISBURG, PA. ALL INTERNATIONAL RIGHTS RESERVED. AMP PRODUCTS MAY BE COVERED BY U.S. AND FOREIGN PATENTS AND/OR PATENTS PENDING.

LOC	DIST	P	F	ZONE	LTR	REVISIONS	DATE	APPROVED
BD	48					0	HAS 5091-881	-
						A	ADDED -2 PER NPR 2395	05/08/88
						B	0BS -2 PER EC 0020-1534-93	04/14/84 PR



- CONNECTOR ACCEPTS SIZE 22 DF PIN CONTACTS, RETENTION TINES ARE AN INTEGRAL PART OF INSERT.
- FLAME RETARDANT 94V-0 RATED GLASS FILLED NYLON, COLOR: BLACK.
- STEEL PER ASTM A109.
- TIN PLATED PER MIL-T-10727.



OBsolete	NO	748366-2
	YES	748366-1
	GROUNDING INDENTS	PART NUMBER

UNLESS OTHERWISE SPECIFIED DIMENSIONS ARE IN INCHES TOLERANCES ON:	DR 3-27-87 C.RICHARD	AMP INCORPORATED Harrisburg, Pa. 17105
2 PL DEC ± .005	CHK 3-31-87 S.WELDON	
3 PL DEC ± .005	APPD 4-2-87 L.BREKOSKY	NAME
ANGLES ± 2°	APPD 4-2-87 V.KUMAR	PLUG CONNECTOR, SIZE 3, 44 POSN, AMPLIMITE® HDP-22
MATERIAL	PRODUCT SPEC	SIZE
MOLDED PARTS:	APPLICATION SPEC	FSCM NO
SHELLS:	WEIGHT	DRAWING NO
		748366
		SCALE 4:1
		SHEET 1 OF 1