

Excellent Integrated System Limited

Stocking Distributor

Click to view price, real time Inventory, Delivery & Lifecycle Information:

[TE Connectivity AMP Connectors](#)
[558500-1](#)

For any questions, you can email us directly:

sales@integrated-circuit.com



Distributor of TE Connectivity AMP Connectors: Excellent Integrated System Limited
 Datasheet of 558500-1 - CONN MOD JACK 8P8C R/A UNSHLD

4

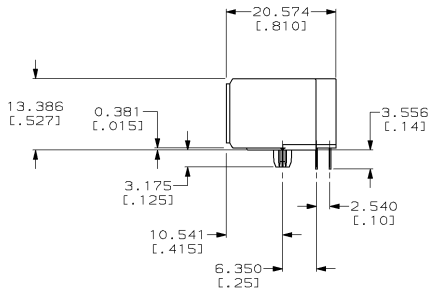
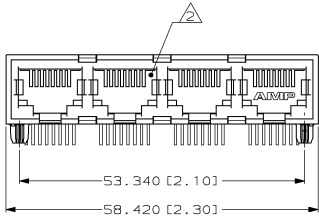
3

2

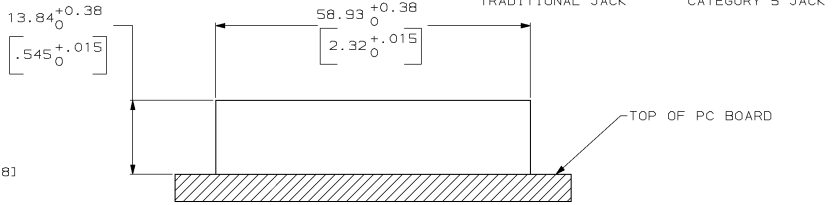
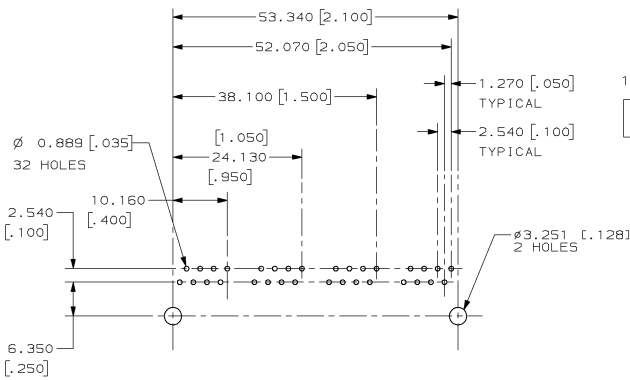
1

THIS DRAWING IS UNPUBLISHED. RELEASED FOR PUBLICATION BY AMP INCORPORATED. ALL RIGHTS RESERVED.

LOC	DATE	REVISIONS	DATE	BY	APP'D
AA	22				
		P LTR			
		C	REV, EC 0502-0432-97	30 JUL 97	DLD JT



- △ MATERIAL: HOUSING - HTN NYLON, BLACK, IR COMPATIBLE, UL 94V-0. TERMINALS - 0.33[.013] THICK PHOS BRONZE PLATED WITH 1.27µm[.000050] MINIMUM HARD GOLD ON LOCALIZED AREA AND 3.81µm[.000150] MINIMUM TIN-LEAD IN SOLDER AREA OVER 1.27µm[.000050] MINIMUM NICKEL UNDERPLATE.
- △ JACK CAVITY CONFORMS TO FCC RULES AND REGULATIONS, PART 68 SUBPART F.
- 3. ALL DIMENSIONS ARE NOMINAL UNLESS OTHERWISE SPECIFIED.
- △ CAUTION: CATEGORY 5 JACK SOLDER TAIL POSITIONS DO NOT FOLLOW SAME NUMBER SEQUENCE AS THAT OF THE TRADITIONAL JACKS.



SUGGESTED PANEL CUTOUT

SUGGESTED PC BOARD LAYOUT
 COMPONENT SIDE
 SEE APPLICATION SPECIFICATION

THIS DRAWING IS UNPUBLISHED. RELEASED FOR PUBLICATION BY AMP INCORPORATED. ALL RIGHTS RESERVED.		DWG	3-B-54	AMP Incorporated Harrisburg, PA 17105-3608
11. 12. 13. 14. 15. 16. 17. 18. 19. 20. 21. 22. 23. 24. 25. 26. 27. 28. 29. 30. 31. 32. 33. 34. 35. 36. 37. 38. 39. 40. 41. 42. 43. 44. 45. 46. 47. 48. 49. 50. 51. 52. 53. 54. 55. 56. 57. 58. 59. 60. 61. 62. 63. 64. 65. 66. 67. 68. 69. 70. 71. 72. 73. 74. 75. 76. 77. 78. 79. 80. 81. 82. 83. 84. 85. 86. 87. 88. 89. 90. 91. 92. 93. 94. 95. 96. 97. 98. 99. 100.		W. LONG	3-16-54	
DIMENSIONS: mm (INCHES)		DATE	3-16-54	MODULAR JACK ASSEMBLY, 4 PORT, 8 POSITION, RIGHT ANGLE, CATEGORY 5
TOLERANCES UNLESS OTHERWISE SPECIFIED:		BY	B. FOX	
Ø	PLC	+	-.000	NAME: G. BEED PRODUCT SPEC: 108-1392 APPLICATION SPEC: 114-2048 WEIGHT: -
PLC	+	-.005	-.005	
PLC	+	-.013	-.013	SIZE: A2 DATE CODE: 00779 DRAWING NO: 558500
PLC	+	-.025	-.025	SCALE: 2:1 SHEET: 1 OF 1 REV: C
PLC	+	-.050	-.050	
PLC	+	-.100	-.100	
PLC	+	-.150	-.150	
PLC	+	-.200	-.200	
PLC	+	-.250	-.250	
PLC	+	-.300	-.300	
PLC	+	-.350	-.350	
PLC	+	-.400	-.400	
PLC	+	-.450	-.450	
PLC	+	-.500	-.500	
PLC	+	-.550	-.550	
PLC	+	-.600	-.600	
PLC	+	-.650	-.650	
PLC	+	-.700	-.700	
PLC	+	-.750	-.750	
PLC	+	-.800	-.800	
PLC	+	-.850	-.850	
PLC	+	-.900	-.900	
PLC	+	-.950	-.950	
PLC	+	-1.000	-1.000	
PLC	+	-1.050	-1.050	
PLC	+	-1.100	-1.100	
PLC	+	-1.150	-1.150	
PLC	+	-1.200	-1.200	
PLC	+	-1.250	-1.250	
PLC	+	-1.300	-1.300	
PLC	+	-1.350	-1.350	
PLC	+	-1.400	-1.400	
PLC	+	-1.450	-1.450	
PLC	+	-1.500	-1.500	
PLC	+	-1.550	-1.550	
PLC	+	-1.600	-1.600	
PLC	+	-1.650	-1.650	
PLC	+	-1.700	-1.700	
PLC	+	-1.750	-1.750	
PLC	+	-1.800	-1.800	
PLC	+	-1.850	-1.850	
PLC	+	-1.900	-1.900	
PLC	+	-1.950	-1.950	
PLC	+	-2.000	-2.000	
PLC	+	-2.050	-2.050	
PLC	+	-2.100	-2.100	
PLC	+	-2.150	-2.150	
PLC	+	-2.200	-2.200	
PLC	+	-2.250	-2.250	
PLC	+	-2.300	-2.300	
PLC	+	-2.350	-2.350	
PLC	+	-2.400	-2.400	
PLC	+	-2.450	-2.450	
PLC	+	-2.500	-2.500	
PLC	+	-2.550	-2.550	
PLC	+	-2.600	-2.600	
PLC	+	-2.650	-2.650	
PLC	+	-2.700	-2.700	
PLC	+	-2.750	-2.750	
PLC	+	-2.800	-2.800	
PLC	+	-2.850	-2.850	
PLC	+	-2.900	-2.900	
PLC	+	-2.950	-2.950	
PLC	+	-3.000	-3.000	
PLC	+	-3.050	-3.050	
PLC	+	-3.100	-3.100	
PLC	+	-3.150	-3.150	
PLC	+	-3.200	-3.200	
PLC	+	-3.250	-3.250	
PLC	+	-3.300	-3.300	
PLC	+	-3.350	-3.350	
PLC	+	-3.400	-3.400	
PLC	+	-3.450	-3.450	
PLC	+	-3.500	-3.500	
PLC	+	-3.550	-3.550	
PLC	+	-3.600	-3.600	
PLC	+	-3.650	-3.650	
PLC	+	-3.700	-3.700	
PLC	+	-3.750	-3.750	
PLC	+	-3.800	-3.800	
PLC	+	-3.850	-3.850	
PLC	+	-3.900	-3.900	
PLC	+	-3.950	-3.950	
PLC	+	-4.000	-4.000	
PLC	+	-4.050	-4.050	
PLC	+	-4.100	-4.100	
PLC	+	-4.150	-4.150	
PLC	+	-4.200	-4.200	
PLC	+	-4.250	-4.250	
PLC	+	-4.300	-4.300	
PLC	+	-4.350	-4.350	
PLC	+	-4.400	-4.400	
PLC	+	-4.450	-4.450	
PLC	+	-4.500	-4.500	
PLC	+	-4.550	-4.550	
PLC	+	-4.600	-4.600	
PLC	+	-4.650	-4.650	
PLC	+	-4.700	-4.700	
PLC	+	-4.750	-4.750	
PLC	+	-4.800	-4.800	
PLC	+	-4.850	-4.850	
PLC	+	-4.900	-4.900	
PLC	+	-4.950	-4.950	
PLC	+	-5.000	-5.000	
PLC	+	-5.050	-5.050	
PLC	+	-5.100	-5.100	
PLC	+	-5.150	-5.150	
PLC	+	-5.200	-5.200	
PLC	+	-5.250	-5.250	
PLC	+	-5.300	-5.300	
PLC	+	-5.350	-5.350	
PLC	+	-5.400	-5.400	
PLC	+	-5.450	-5.450	
PLC	+	-5.500	-5.500	
PLC	+	-5.550	-5.550	
PLC	+	-5.600	-5.600	
PLC	+	-5.650	-5.650	
PLC	+	-5.700	-5.700	
PLC	+	-5.750	-5.750	
PLC	+	-5.800	-5.800	
PLC	+	-5.850	-5.850	
PLC	+	-5.900	-5.900	
PLC	+	-5.950	-5.950	
PLC	+	-6.000	-6.000	
PLC	+	-6.050	-6.050	
PLC	+	-6.100	-6.100	
PLC	+	-6.150	-6.150	
PLC	+	-6.200	-6.200	
PLC	+	-6.250	-6.250	
PLC	+	-6.300	-6.300	
PLC	+	-6.350	-6.350	
PLC	+	-6.400	-6.400	
PLC	+	-6.450	-6.450	
PLC	+	-6.500	-6.500	
PLC	+	-6.550	-6.550	
PLC	+	-6.600	-6.600	
PLC	+	-6.650	-6.650	
PLC	+	-6.700	-6.700	
PLC	+	-6.750	-6.750	
PLC	+	-6.800	-6.800	
PLC	+	-6.850	-6.850	
PLC	+	-6.900	-6.900	
PLC	+	-6.950	-6.950	
PLC	+	-7.000	-7.000	
PLC	+	-7.050	-7.050	
PLC	+	-7.100	-7.100	
PLC	+	-7.150	-7.150	
PLC	+	-7.200	-7.200	
PLC	+	-7.250	-7.250	
PLC	+	-7.300	-7.300	
PLC	+	-7.350	-7.350	
PLC	+	-7.400	-7.400	
PLC	+	-7.450	-7.450	
PLC	+	-7.500	-7.500	
PLC	+	-7.550	-7.550	
PLC	+	-7.600	-7.600	
PLC	+	-7.650	-7.650	
PLC	+	-7.700	-7.700	
PLC	+	-7.750	-7.750	
PLC	+	-7.800	-7.800	
PLC	+	-7.850	-7.850	
PLC	+	-7.900	-7.900	
PLC	+	-7.950	-7.950	
PLC	+	-8.000	-8.000	
PLC	+	-8.050	-8.050	
PLC	+	-8.100	-8.100	
PLC	+	-8.150	-8.150	
PLC	+	-8.200	-8.200	
PLC	+	-8.250	-8.250	
PLC	+	-8.300	-8.300	
PLC	+	-8.350	-8.350	
PLC	+	-8.400	-8.400	
PLC	+	-8.450	-8.450	
PLC	+	-8.500	-8.500	
PLC	+	-8.550	-8.550	
PLC	+	-8.600	-8.600	
PLC	+	-8.650	-8.650	
PLC	+	-8.700	-8.700	
PLC	+	-8.750	-8.750	
PLC	+	-8.800	-8.800	
PLC	+	-8.850	-8.850	
PLC	+	-8.900	-8.900	
PLC	+	-8.950	-8.950	
PLC	+	-9.000	-9.000	
PLC	+	-9.050	-9.050	
PLC	+	-9.100	-9.100	
PLC	+	-9.150	-9.150	
PLC	+	-9.200	-9.200	
PLC	+	-9.250	-9.250	
PLC	+	-9.300	-9.300	
PLC	+	-9.350	-9.350	
PLC	+	-9.400	-9.400	
PLC	+	-9.450	-9.450	
PLC	+	-9.500	-9.500	
PLC	+	-9.550	-9.550	
PLC	+	-9.600	-9.600	
PLC	+	-9.650	-9.650	
PLC	+	-9.700	-9.700	
PLC	+	-9.750	-9.750	
PLC	+	-9.800	-9.800	
PLC	+	-9.850	-9.850	
PLC	+	-9.900	-9.900	
PLC	+	-9.950	-9.950	
PLC	+	-10.000	-10.000	