

Excellent Integrated System Limited

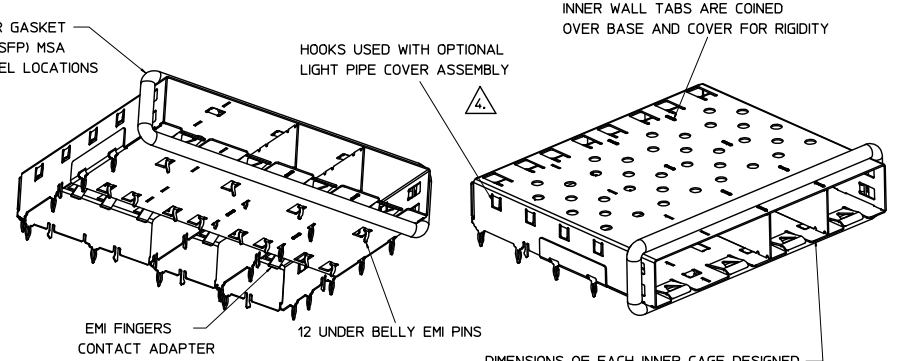
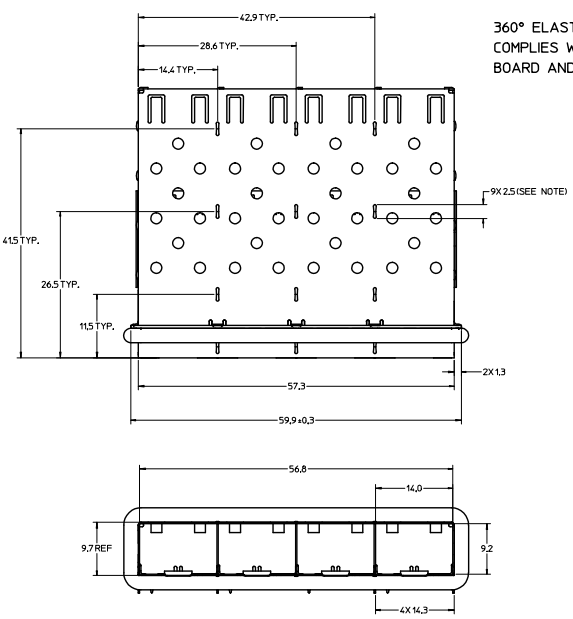
Stocking Distributor

Click to view price, real time Inventory, Delivery & Lifecycle Information:

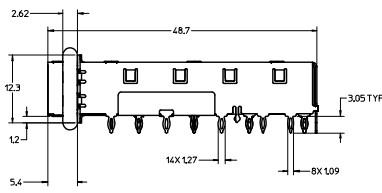
[Molex Connector Corporation](#)
[0747280415](#)

For any questions, you can email us directly:
sales@integrated-circuit.com

MM 3D MODEL:EM-74728-0415



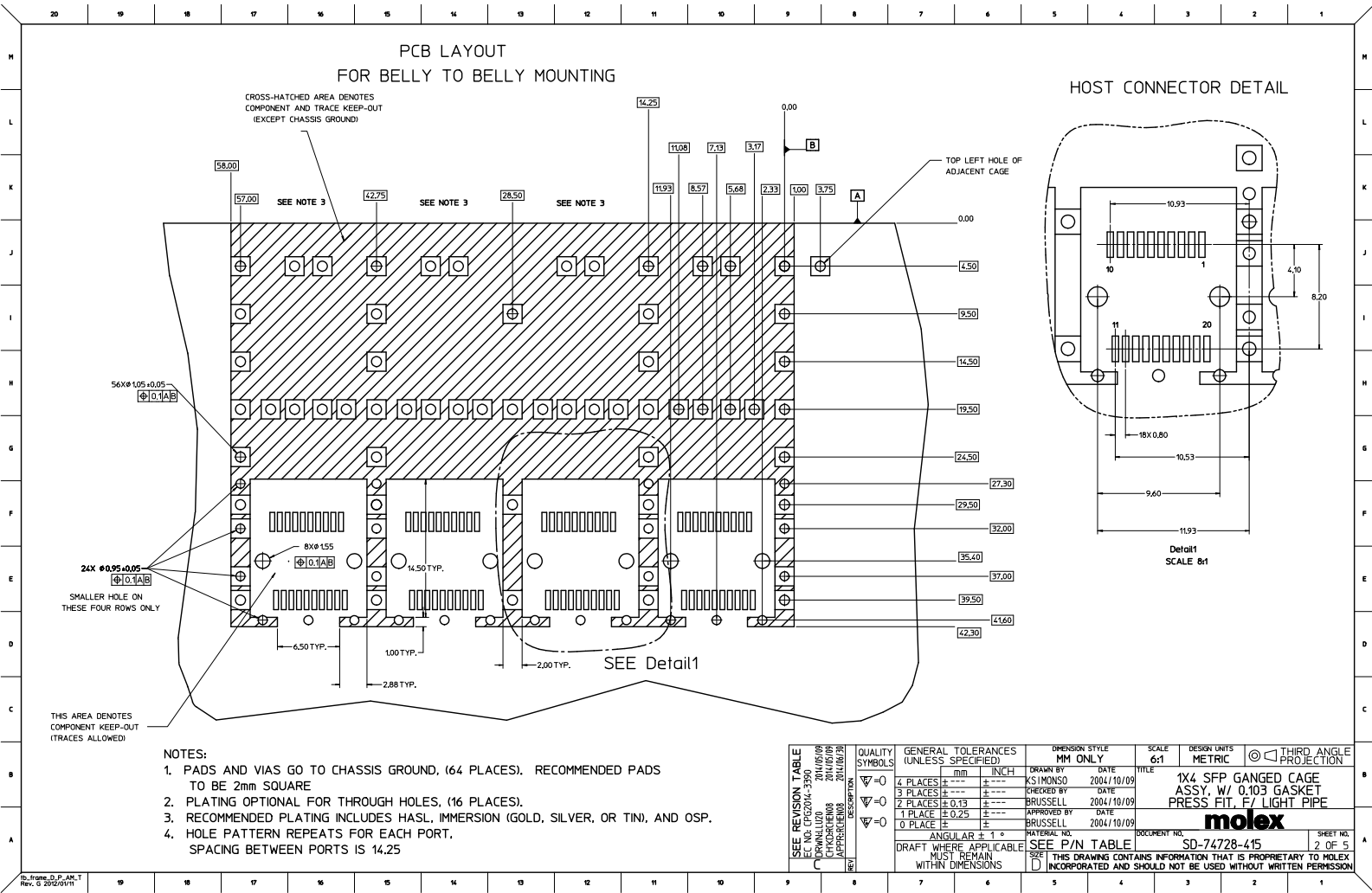
DIMENSIONS OF EACH INNER CAGE DESIGNED TO FUNCTION WITH SMALL FORM-FACTOR PLUGGABLE (SFP) TRANSCEIVER



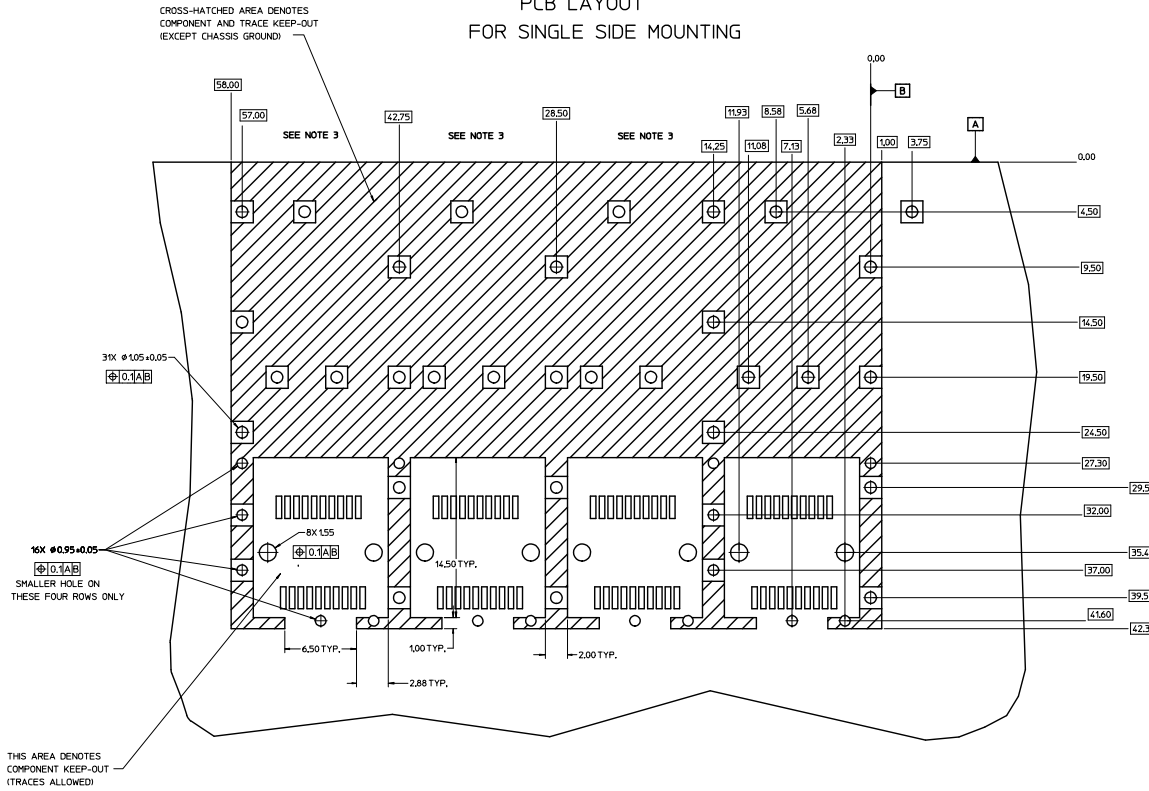
PART NUMBER	ELASTOMERIC GASKET
747280415	FLAMMABILITY RATING
747280424	EQUATE TO UL94 V-0

- NOTES:
- PRESS FIT LEGS 3.05 LONG-
1.57 MINIMUM PCB THICKNESS FOR SINGLE SIDED USE.
3.00 MINIMUM PCB THICKNESS FOR BELLY TO BELLY USE.
 - MATERIAL: COPPER ALLOY
PLATING: NONE.
NOTE: A PRE-PLATED NICKEL VERSION IS AVAILABLE.
REFER TO DOCUMENT SD-74728-420.
 - REFERENCE DOCUMENTS:
PRODUCT SPECIFICATION: PS-74728-000.
COSMETIC SPECIFICATIONS: WI-HP-7-2774 AND WI-HPA-7-0093.
TEST SUMMARY: TS-74728-0415.
- ▲ MATES WITH SERIES 74728, LIGHT PIPE COVER ASSEMBLY.
5. NO RoHS EXEMPTIONS.

SEE REVISION TABLE FOR CHANGES	QUALITY SYMBOLS	GENERAL TOLERANCES (UNLESS SPECIFIED)	DIMENSION STYLE	SCALE	DESIGN UNITS	THIRD ANGLE PROJECTION
	4 PLACES	mm INCH	MM ONLY	3:1	METRIC	☑
	3 PLACES	±0.13	DRAWN BY	DATE	TITLE	
	2 PLACES	±0.25	KSIMONSO	2004/10/09	1X4 SFP GANGED CAGE ASSY. W/ 0.103 GASKET PRESS. FIT. F/ LIGHT PIPE	
	0 PLACE	±	BRUSSELL	2004/10/09		
	ANGULAR ± 1.0	DRAFT WHERE APPLICABLE MUST REMAIN WITHIN DIMENSIONS	SEE P/N TABLE	MATERIAL NO.	DOCUMENT NO.	SHEET NO.
					SD-74728-415	1 OF 5
					THIS DRAWING CONTAINS INFORMATION THAT IS PROPRIETARY TO MOLEX INCORPORATED AND SHOULD NOT BE USED WITHOUT WRITTEN PERMISSION	



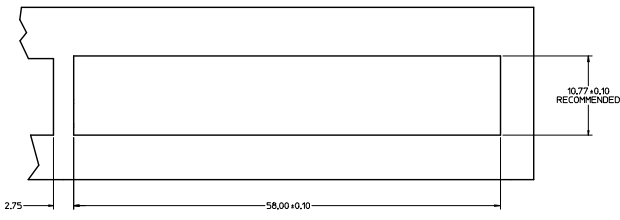
PCB LAYOUT
FOR SINGLE SIDE MOUNTING



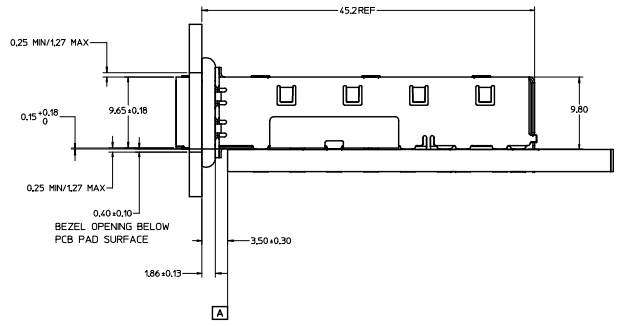
NOTES:

1. PADS AND VIAS GO TO CHASSIS GROUND, (34 PLACES). RECOMMENDED PADS TO BE 2mm SQUARE
2. PLATING OPTIONAL FOR THROUGH HOLES, (12 PLACES).
3. RECOMMENDED PLATING INCLUDES HASL, IMMERSION (GOLD, SILVER, OR TIN), AND OSP.
4. HOLE PATTERN REPEATS FOR EACH PORT, SPACING BETWEEN PORTS IS 14.25

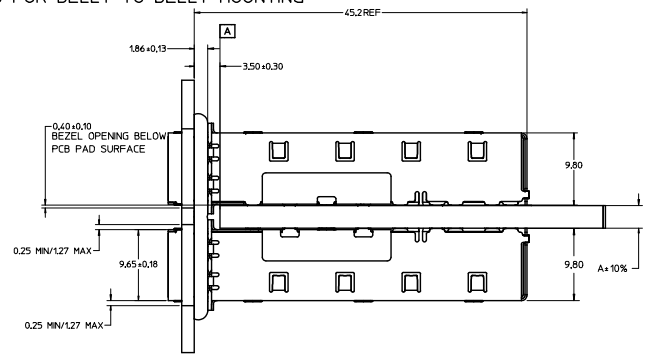
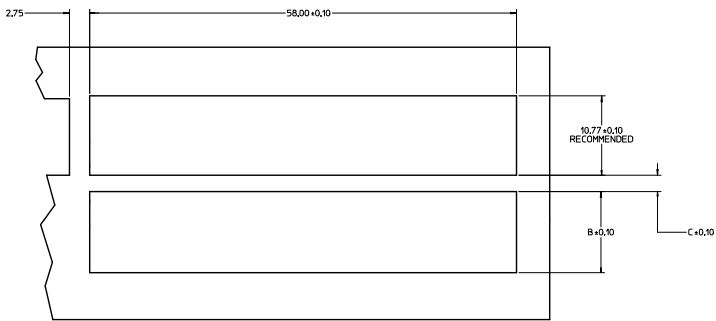
QUALITY SYMBOLS	GENERAL TOLERANCES (UNLESS SPECIFIED)		DIMENSION STYLE		SCALE	DESIGN UNITS	THIRD ANGLE PROJECTION
	mm	INCH	MM ONLY	DATE			
▽=0	4 PLACES ±	±	DRAWN BY	DATE	6:1	METRIC	
▽=0	3 PLACES ±	±	KSIMUNSO	2004/10/09			
▽=0	2 PLACES ±	±	CHECKED BY	DATE			
▽=0	1 PLACE ±	±	BRUSSELL	2004/10/09			
▽=0	0 PLACE ±	±	APPROVED BY	DATE			TITLE 1X4 SFP GANGED CAGE ASSY. W/ 0.103 GASKET PRESS FIT. F/ LIGHT PIPE
ANGULAR ± 1°			BRUSSELL	2004/10/09			
DRAFT WHERE APPLICABLE MUST REMAIN WITHIN DIMENSIONS			SEE P/N TABLE		DOCUMENT NO.		SHEET NO.
SIZE D THIS DRAWING CONTAINS INFORMATION THAT IS PROPRIETARY TO MOLEX INCORPORATED AND SHOULD NOT BE USED WITHOUT WRITTEN PERMISSION			SD-74728-415		3 OF 5		



BEZEL AND BOARD POSITION DIMENSIONS FOR SINGLE SIDE MOUNTING



BEZEL AND BOARD POSITION DIMENSIONS FOR BELLY TO BELLY MOUNTING



NOTE:
 1.FOR A GIVEN BOARD THICKNESS (A), DIMENSIONS (B) AND (C) ARE DIRECTLY AFFECTED.
 2.USE RECOMMENDED DIMENSIONS AND TOLERANCES TO AID IN DEVELOPING BEZEL OPENING.
 3.FOR EXAMPLE USING A BOARD THICKNESS OF 3.175 THE RECOMMENDED VALUES WOULD BE:

- A= 3.18
- B= 11.03
- C= 2.23

SEE REVISION TABLE REC NO. C12204-370 DRAWN BY 20/05/09 CHECKED BY 28/05/09 APPROVED BY 28/05/09 DATE	QUALITY SYMBOLS	GENERAL TOLERANCES (UNLESS SPECIFIED)	DIMENSION STYLE	SCALE	DESIGN UNITS	THIRD ANGLE PROJECTION	
	∇=0 ∇=0 ∇=0	mm INCH	4 PLACES ± --- ± --- 3 PLACES ± --- ± --- 2 PLACES ± 0.13 ± --- 1 PLACE ± 0.25 ± --- 0 PLACE ± ±	MM ONLY	4:1	METRIC	DRAWN BY DATE KSIMONSO 2004/10/09 CHECKED BY DATE BRUSSELL 2004/10/09 APPROVED BY DATE BRUSSELL 2004/10/09
	ANGULAR ± 1.0 DRAFT WHERE APPLICABLE MUST REMAIN WITHIN DIMENSIONS	SEE P/N TABLE	MATERIAL NO.	DOCUMENT NO.	1X4 SFP GANGED CAGE ASSY. W/ 0.103 GASKET PRESS FIT. F/ LIGHT PIPE		SHEET NO. 4 OF 5
						molex	

REVISION HISTORY

DATE	REV	DESCRIPTION
08/17/2004	1	PRELIMINARY DOCUMENT.
10/09/2004	A	INITIAL RELEASE.
01/20/2006	B	ADDED PCB AND BEZEL LAYOUT. UPDATED NOTES.
05/09/2014	C	1. ADDED P/N 747280424. [SHT 1] 2. ADDED *MM 3D MODEL: EM-74728-0415* ON LEFT TOP CORNER. [SHT 1] 3. NOTE 5 CHANGED AS *NO RoHS EXEMPTIONS*. [SHT 1] 4. REMOVE ALL DIMENSIONS IN INCH. [SHT 1 TO 4]

QUALITY SYMBOLS	GENERAL TOLERANCES (UNLESS SPECIFIED)		DIMENSION STYLE		SCALE	DESIGN UNITS METRIC	THIRD ANGLE PROJECTION
	mm	INCH	MM ONLY	DATE			
$\nabla=0$	4 PLACES ±.0004	±.001		DRAWN BY KSIMONSO	2004/10/09		
$\nabla=0$	3 PLACES ±.001	±.002		CHECKED BY BRUSSELL	2004/10/09		
$\nabla=0$	2 PLACES ±0.13	±.005		APPROVED BY BRUSSELL	2004/10/09		
$\nabla=0$	1 PLACE ±0.25	±.01					
$\nabla=0$	0 PLACE ±	±					
	ANGULAR ± 1°						
	DRAFT WHERE APPLICABLE MUST REMAIN WITHIN DIMENSIONS						
	SEE P/N TABLE						
	THIS DRAWING CONTAINS INFORMATION THAT IS PROPRIETARY TO MOLEX INCORPORATED AND SHOULD NOT BE USED WITHOUT WRITTEN PERMISSION						