



**Distributor of FCI: Excellent Integrated System Limited**

Datasheet of D13W3S17B5GX3CLF - D-Sub Connector Receptacle, Female Sockets 13 (10 + 3 Power) Position Through Hole, Right Angle Solder

Contact us: [sales@integrated-circuit.com](mailto:sales@integrated-circuit.com) Website: [www.integrated-circuit.com](http://www.integrated-circuit.com)

---

## **Excellent Integrated System Limited**

Stocking Distributor

Click to view price, real time Inventory, Delivery & Lifecycle Information:

[FCI](#)

[D13W3S17B5GX3CLF](#)

For any questions, you can email us directly:

[sales@integrated-circuit.com](mailto:sales@integrated-circuit.com)

Contact us: [sales@integrated-circuit.com](mailto:sales@integrated-circuit.com) Website: [www.integrated-circuit.com](http://www.integrated-circuit.com)

A

B

C

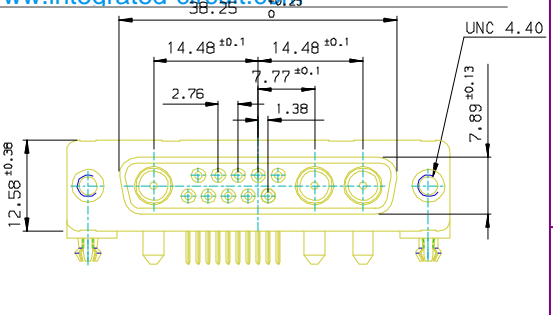
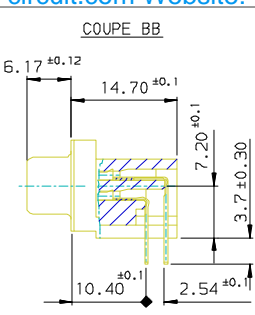
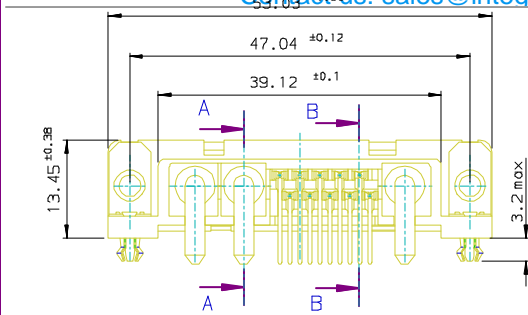
D

A

B

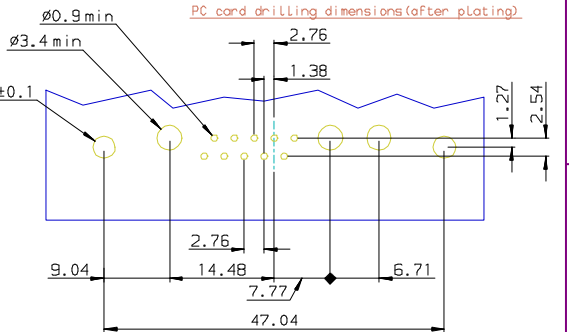
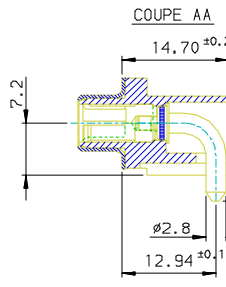
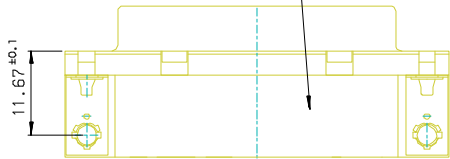
C

D



FOR ROHS DETAILS REFER DWG.N0:C01-8646-0000

Part Number & Date Code Printing



**CHARACTERISTICS:**

- Max current powers contacts : 40A per standard contact
- Max current rating: 7.5A per standard contact
- Dielectric withstanding voltage: 1000V minimum
- Insulation resistance: >5000Ma
- Contact resistance: <10ma
- Mating and unmating Forces: conform to MILC24308
- Material of -insulator: black polyester class UL 94 V-0
- shell: Steel
- contact: brass for power phosphor bronze for standard phosphor bronze
- harpsons: brass
- metal plate: brass
- threaded inserts: brass
- Plating of -shell and accessories: tin/Zinc Cr3
- contact: Ni 0.8µmini + Au0.4µmini
- mating area: Ni 0.8µmini + Sn Pb 2µmini
- termination area: Ni 0.8µmini + Sn Pb 2µmini
- Temperature range: -55°C,+125°C
- harpson for PC board thickness from 1.6mm to 1.8mm

D13W3S17B5GX3C**	40 A
PART NUMBER	POWER type

LF FOR LEAD FREE

European Views

www.fciconnect.com		surface ISO 1302	tolerance std ISO 406 ISO 1101	projection mm	size A3	Scale 1:1
Dr JOHN SLEEBA 1997/05/15	Eng GEORGE VJ 1997/05/15	Chr GEORGE VJ 2005/07/27	Appr KVSD 2005/07/27	ANGULAR	LINEAR	ECN -
rev	ecm no	dr	date	ANGULAR	LINEAR	Product family
B	05-0124	JS	2005/07/27	±.XX	±0.1	D-SUB
C	06-0074	SK	2006/06/08	±.XXX	±0.1	Spec ref -
				Title		Rev.
				FCI FEMALE CONNECTOR 13W3 DELTA D with power contacts		C
				catalog no		sheet 1 of 1
				DELTA-D		CUSTOMER
				drawing no		C01-8646-0548

REV F - 2006-04-17

Copyright FCI