

## Excellent Integrated System Limited

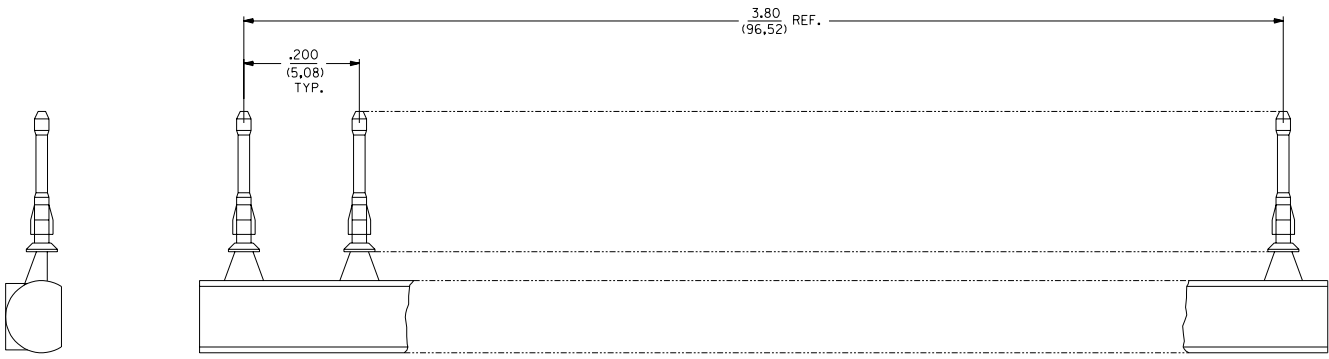
Stocking Distributor

Click to view price, real time Inventory, Delivery & Lifecycle Information:

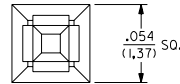
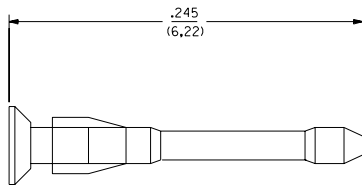
[Molex Connector Corporation](#)  
[0015040292](#)

For any questions, you can email us directly:

[sales@integrated-circuit.com](mailto:sales@integrated-circuit.com)



SCALE 8:1



SCALE 20:1

**NOTES:**

1. MATERIAL: G.F. POLYESTER; UL 94V-0, COLOR: SEE CHART
2. TO BE USED WITH PRODUCT HAVING .032 - .038 SO. PIN WINDOWS.
3. KEY IS MOLDED AS A 20-PIECE UNIT.
4. PART FUNCTIONS WITH OR WITHOUT PRESENCE OF CONTACT IN HOUSING.

I5-04-0293	WHITE
I5-04-0292	BLACK
ORDER NO.	COLOR PIN MATERIAL

DIMENSIONS SHOWN IN METRIC INCH UNLESS OTHERWISE SPECIFIED TOLERANCES ARE AS FOLLOWS:		MFG. SH. REV. LTR. REVISIONS	
3 PLACE ± .005	---	√ = 0	▽ = 0
2 PLACE ± .01	± 0.15	REVISE ONLY ON CAD SYSTEM	
1 PLACE ---	± 0.25	TITLE	
DRAFT WHERE APPLICABLE MUST REMAIN WITHIN DIMENSIONS		UNIVERSAL POLARIZING PIN	
MOLEX INCORPORATED		SHEET NO. DATE	
LISECAL. 40532 U.S.A.		1 OF 1 11/17/00	
PART NO. SEE CHART		DRAWING NO. SD-40713-**	
DRG. BY: JJS	CHK'D. BY: DJB	THIS DRAWING CONTAINS INFORMATION THAT IS PROPRIETARY TO MOLEX, INC. AND SHOULD NOT BE USED WITHOUT WRITTEN PERMISSION.	
APP'D. BY: DJB	SCALE 20:1	FILE NAME	DATE DD C