

## Excellent Integrated System Limited

Stocking Distributor

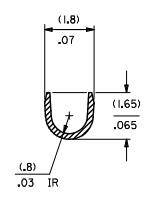
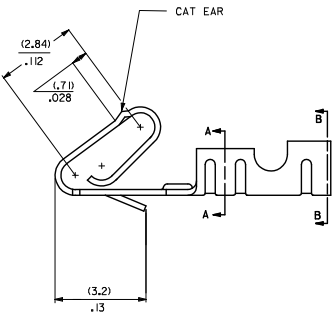
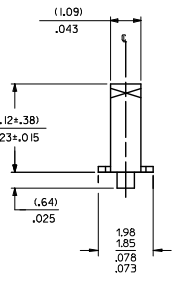
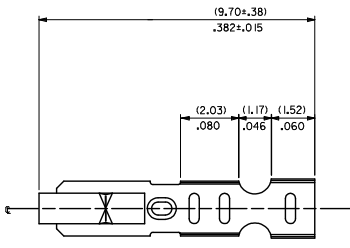
Click to view price, real time Inventory, Delivery & Lifecycle Information:

[Molex Connector Corporation](#)  
[0008650804](#)

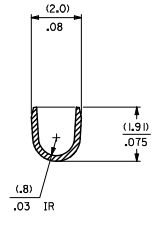
For any questions, you can email us directly:

[sales@integrated-circuit.com](mailto:sales@integrated-circuit.com)

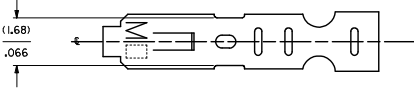
- NOTES:
1. MATERIAL: PHOS BRONZE
  2. FINISH: SEE LEGEND
  3. PRODUCT SPECIFICATION: PS-10-07
  4. PACKAGING: LOOSE TERMINALS: PER PK-2759-001  
CHAIN FORM TERMINALS: PER PK-6459-001
  5. INSERTION FORCE OF TERMINAL INTO (2.54)/.100 CL HOUSING IS 11.1 N / 2.5 LBS MAX.
  6. TERMINAL RETENTION IN HOUSING IS 26.7N / 6LBS MIN. WHEN PULLED AT THE RATE OF 25.4MM / 1 INCH PER MINUTE.
  7. DIMENSIONS GIVEN ACROSS CENTERLINES ARE SYMMETRICAL ABOUT THOSE CENTERLINES WITHIN HALF THE TOTAL TOLERANCE.
  8. CRIMP IS FOR 22-30 GA WIRE WITH (1.57)/.062 DIA. INSULATION MAX.
  9. THIS PART CONFORMS TO CLASS B REQUIREMENTS OF COSMETIC SPECIFICATION PS-45499-002.



SECTION A-A  
BACKGROUND OMITTED

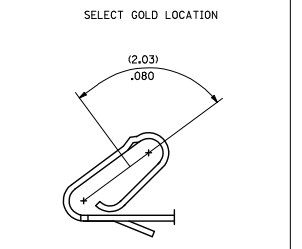
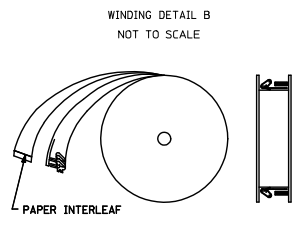


SECTION B-B  
BACKGROUND OMITTED



41572-\*(\*\*\*)\*  
MATERIAL: A= SEE NOTE 1  
FORM: L=LOOSE, BLANK=CHAIN PER DETAIL B  
PLATING: (P909) OVERALL HOT TIN DIP: (0.00254)/.000100 MIN. (154) OVERALL TIN: (0.00254)/.000100 MIN. OVER (0.00127)/.000050 MIN. NICKEL

PART NO.	ENG NO.
08-65-0804	41572-A(P909)
08-65-0805	41572-A(P909)L
41572-0002	41572-A(154)



REV	DESCRIPTION	QUALITY SYMBOLS	GENERAL TOLERANCES (UNLESS SPECIFIED)		DIMENSION STYLE		SCALE	DESIGN UNITS	THIRD ANGLE PROJECTION
			mm	INCH	MM/IN	DATE			
G1	ADD PK-6459-001 EC NO: UCF204-0151 DRAWN BY: DRWINKIPPER CHKD BY: CHKOBANDERSON APPROVED BY: APPRCSMITH	4 PLACES ± --- ± --- 3 PLACES ± --- ± .010 2 PLACES ± 0.25 ± .015 1 PLACE ± 0.38 ± --- 0 PLACE ± ±	DRAWN BY: SAMIEC CHECKED BY: PATEL APPROVED BY:	DATE: 2013/07/18 DATE: 2013/07/18 DATE: 1993/03/19	TITLE: KK (2.54)/.100 CRIMP TERMINAL 22-30 GA 6459 WITH CAT EAR MATERIAL NO.: SEE CHART DOCUMENT NO.: SD-41572	SCALE: 10:1 DESIGN UNITS: INCH	THIRD ANGLE PROJECTION	SHEET NO.: 1 OF 1	