

## Excellent Integrated System Limited

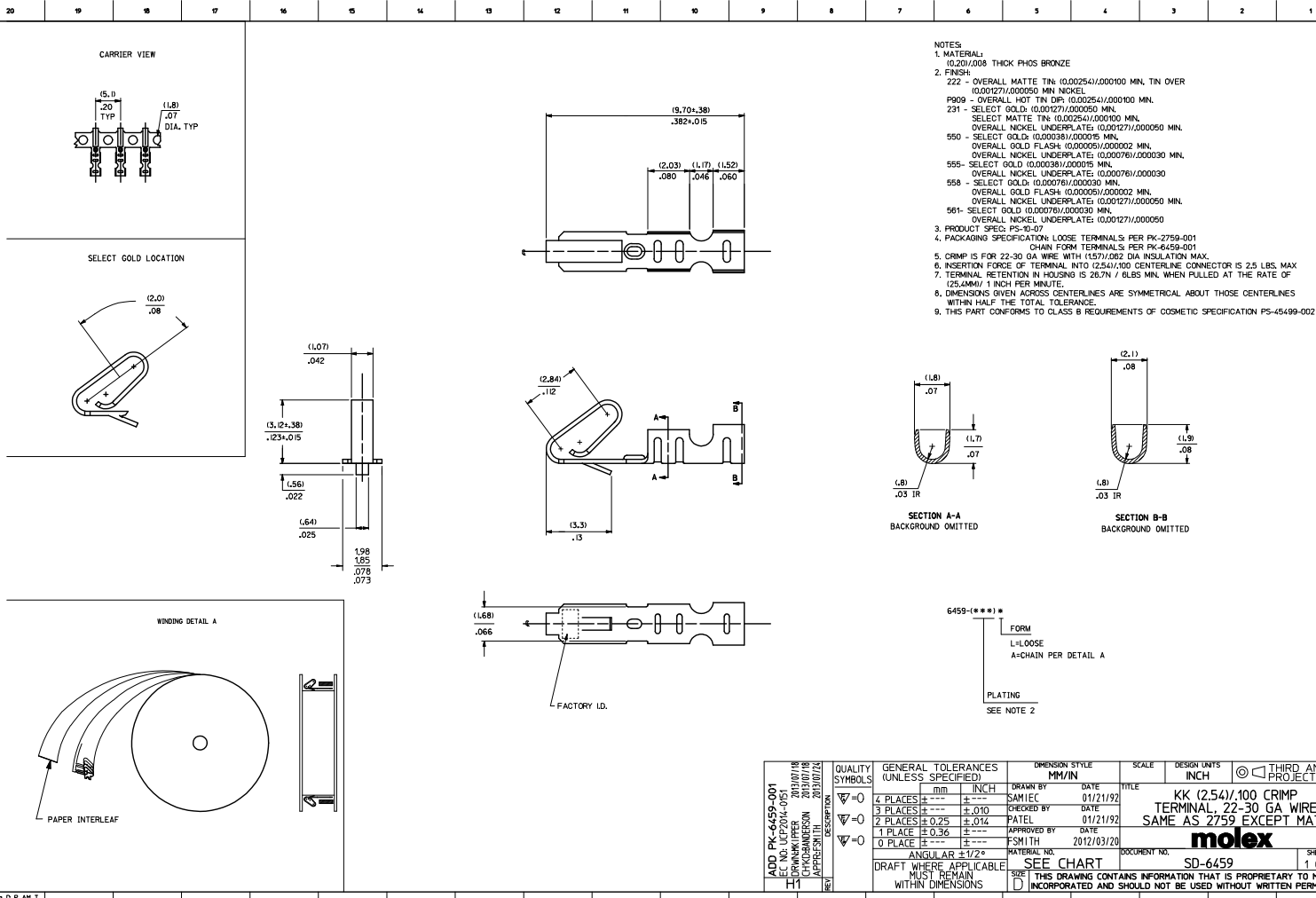
Stocking Distributor

Click to view price, real time Inventory, Delivery & Lifecycle Information:

[Molex Connector Corporation](#)  
[0008520101](#)

For any questions, you can email us directly:

[sales@integrated-circuit.com](mailto:sales@integrated-circuit.com)



- NOTES**
1. MATERIAL: (0.20)/008 THICK PHOS BRONZE
  2. FINISH:
    - 222 - OVERALL MATTE TIN: (0.00254)/000100 MIN. TIN OVER (0.00127)/000050 MIN. NICKEL
    - P909 - OVERALL HOT TIN DIP: (0.00254)/000100 MIN. OVERALL NICKEL UNDERPLATE: (0.00127)/000050 MIN. SELECT MATTE TIN: (0.00254)/000100 MIN. OVERALL NICKEL UNDERPLATE: (0.00127)/000050 MIN.
    - 231 - SELECT GOLD: (0.00076)/000030 MIN. OVERALL GOLD FLASH: (0.00005)/000002 MIN. OVERALL NICKEL UNDERPLATE: (0.00076)/000030 MIN.
    - 550 - SELECT GOLD: (0.00038)/000015 MIN. OVERALL GOLD FLASH: (0.00005)/000002 MIN. OVERALL NICKEL UNDERPLATE: (0.00076)/000030 MIN.
    - 555 - SELECT GOLD: (0.00038)/000015 MIN. OVERALL GOLD FLASH: (0.00005)/000002 MIN. OVERALL NICKEL UNDERPLATE: (0.00076)/000030 MIN.
    - 558 - SELECT GOLD: (0.00076)/000030 MIN. OVERALL GOLD FLASH: (0.00005)/000002 MIN. OVERALL NICKEL UNDERPLATE: (0.00127)/000050 MIN.
    - 561 - SELECT GOLD: (0.00038)/000015 MIN. OVERALL GOLD FLASH: (0.00005)/000002 MIN. OVERALL NICKEL UNDERPLATE: (0.00127)/000050 MIN.
  3. PRODUCT SPEC: PS-40-07
  4. PACKAGING SPECIFICATION: LOOSE TERMINALS PER PK-2759-001 CHAIN FORM TERMINALS PER PK-6459-001
  5. CRIMP IS FOR 22-30 GA WIRE WITH (1.57)/082 DIA INSULATION MAX.
  6. INSERTION FORCE OF TERMINAL INTO (2.54)/100 CENTERLINE CONNECTOR IS 2.5 LBS. MAX
  7. TERMINAL RETENTION IN HOUSING IS 28.7N / 6LBS MIN. WHEN PULLED AT THE RATE OF (125.4MM)/1 INCH PER MINUTE.
  8. DIMENSIONS GIVEN ABOVE CENTERLINES ARE SYMMETRICAL ABOUT THOSE CENTERLINES WITHIN HALF THE TOTAL TOLERANCE.
  9. THIS PART CONFORMS TO CLASS B REQUIREMENTS OF COSMETIC SPECIFICATION PS-45499-002

QUALITY SYMBOLS	GENERAL TOLERANCES (UNLESS SPECIFIED)		DIMENSION STYLE		SCALE	DESIGN UNITS	THIRD ANGLE PROJECTION
	mm	INCH	MM/IN	DATE			
∇=0	4 PLACES	±.010	---	---	INCH	INCH	⊙
∇=0	3 PLACES	±.025	---	---	MM/IN	MM/IN	
∇=0	2 PLACES	±.05	---	---			
∇=0	1 PLACE	±.06	---	---			
∇=0	0 PLACE	---	---	---			

ADD PK-6459-001	QUALITY SYMBOLS	GENERAL TOLERANCES (UNLESS SPECIFIED)	DIMENSION STYLE	SCALE	DESIGN UNITS	THIRD ANGLE PROJECTION
EC NO. L16724-001	∇=0	4 PLACES ±.010	MM/IN	INCH	INCH	⊙
DRN/CHK/APPR 2013/07/18	∇=0	3 PLACES ±.025	---	---	---	---
CHK/DRM/APPR 2013/07/18	∇=0	2 PLACES ±.05	---	---	---	---
APP/PRSM/ITR 2013/07/18	∇=0	1 PLACE ±.06	---	---	---	---
REV		0 PLACE ---	---	---	---	---

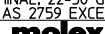
DATE	2012/03/20	DRAWN BY	SAMIEC	DATE	01/21/192
DATE	01/21/192	CHECKED BY	PATEL	DATE	01/21/192
DATE	01/21/192	APPROVED BY	FSM1TH	DATE	01/21/192

ANGULAR	±1/2°	MATERIAL NO.	SEE CHART	DOCUMENT NO.	SD-6459	SHEET NO.	1 OF 2
DRAFT WHERE APPLICABLE	MUST REMAIN WITHIN DIMENSIONS	SIZE	D	THIS DRAWING CONTAINS INFORMATION THAT IS PROPRIETARY TO MOLEX INCORPORATED AND SHOULD NOT BE USED WITHOUT WRITTEN PERMISSION			

6459-(\*\*\*\*)\*

PART NO.	ENG. NO.
08-52-0101	6459-(P909)
08-52-0123	6459-(P909)L
08-65-0801	6459-(561)
	6459-(561)L
08-52-0118	6459-(222)
	6459-(222)L
08-65-0811	6459-(558)
08-65-0812	6459-(558)L
08-65-0815	6459-(555)
08-65-0816	6459-(555)L
08-65-0813	6459-(550)
08-65-0814	6459-(550)L
08-65-0817	6459-(231)
08-65-0818	6459-(231)L

SEE SHEET 1 EC NO. 067004-001 DR/WRK/UPPER 2010/07/18 CHK/BAW/PERSON 2010/07/18 APP/RES/SMITH 2010/07/24 H1 H1	QUALITY SYMBOLS	GENERAL TOLERANCES (UNLESS SPECIFIED)	DIMENSION STYLE	SCALE	DESIGN UNITS	THIRD ANGLE PROJECTION	
	$\nabla=0$ $\nabla=0$ $\nabla=0$	mm INCH 4 PLACES ±--- ±--- 3 PLACES ±--- ±.010 2 PLACES ±0.25 ±.014 1 PLACE ±0.36 ±--- 0 PLACE ±--- ±---	DRAWN BY DATE SAMIEC 01/21/92 CHECKED BY DATE PATEL 01/21/92 APPROVED BY DATE FSMITH 2012/03/20	MM/IN	1:1	INCH	KK (2.54)/100 CRIMP TERMINAL 22-30 GA WIRE SAME AS 2759 EXCEPT MATL
	ANGULAR ±1/2° DRAFT WHERE APPLICABLE MUST REMAIN WITHIN DIMENSIONS	MATERIAL NO. SEE CHART SIZE D THIS DRAWING CONTAINS INFORMATION THAT IS PROPRIETARY TO MOLEX INCORPORATED AND SHOULD NOT BE USED WITHOUT WRITTEN PERMISSION	DOCUMENT NO. SD-6459			SHEET NO. 2 OF 2	
	Rev. 0 2010/07/18						