

Excellent Integrated System Limited

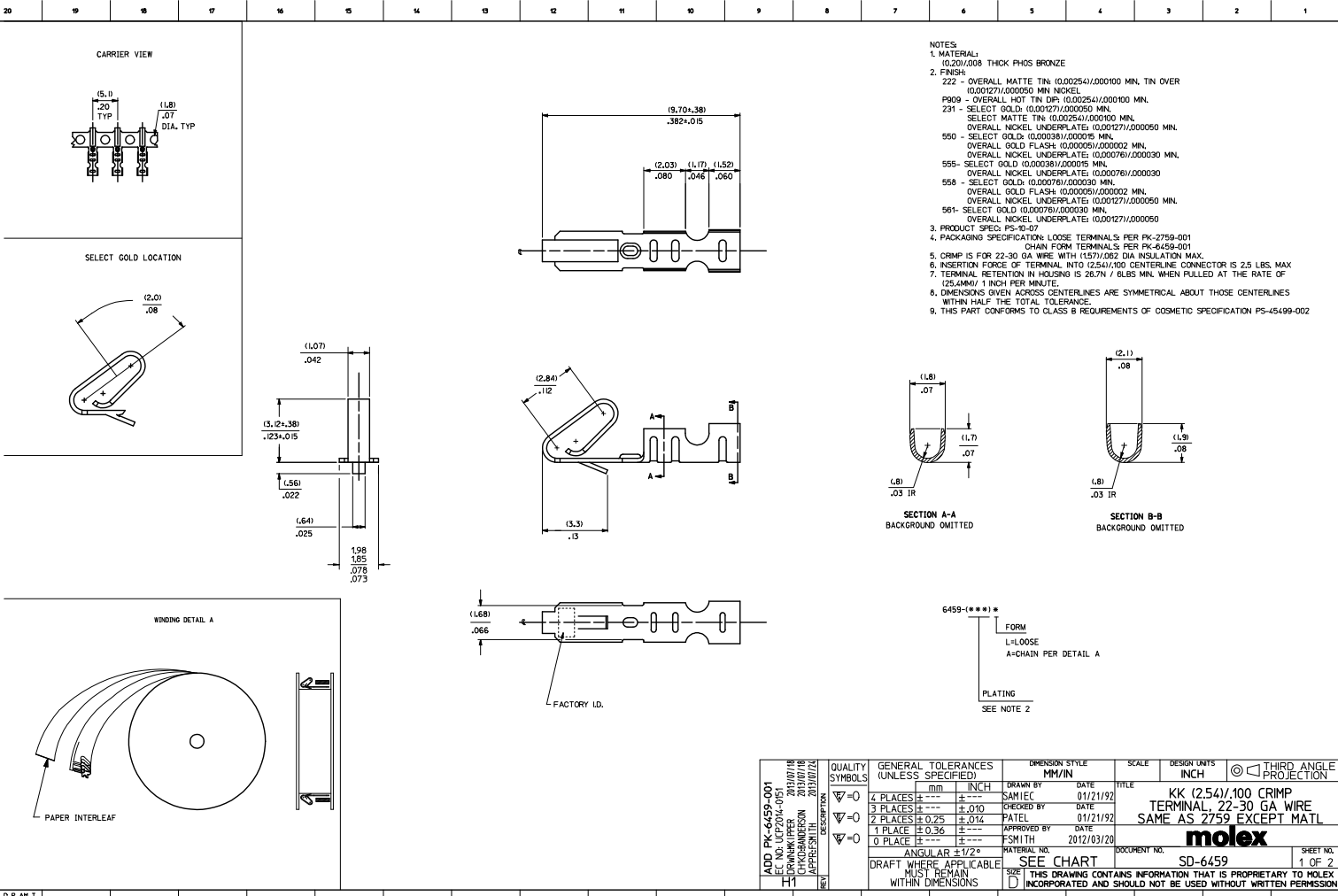
Stocking Distributor

Click to view price, real time Inventory, Delivery & Lifecycle Information:

[Molex Connector Corporation](#)
[0008650813](#)

For any questions, you can email us directly:

sales@integrated-circuit.com



- NOTES
1. MATERIAL: (0.20)/.008 THICK PHOS BRONZE
 2. FINISH: 222 - OVERALL MATTE TIN: (0.00254)/.000100 MIN. TIN OVER (0.00127)/.000050 MIN. NICKEL P909 - OVERALL HOT TIN DIP: (0.00254)/.000100 MIN. OVERALL NICKEL UNDERPLATE: (0.00127)/.000050 MIN. 231 - SELECT GOLD: (0.00076)/.000050 MIN. SELECT MATTE TIN: (0.00254)/.000100 MIN. OVERALL NICKEL UNDERPLATE: (0.00127)/.000050 MIN. 550 - SELECT GOLD: (0.00051)/.000025 MIN. OVERALL GOLD FLASH: (0.00005)/.000025 MIN. OVERALL NICKEL UNDERPLATE: (0.00076)/.000030 MIN. 555 - SELECT GOLD: (0.00038)/.000015 MIN. OVERALL NICKEL UNDERPLATE: (0.00076)/.000030 MIN. 558 - SELECT GOLD: (0.00076)/.000030 MIN. OVERALL GOLD FLASH: (0.00005)/.000025 MIN. OVERALL NICKEL UNDERPLATE: (0.00127)/.000050 MIN. 561 - SELECT GOLD: (0.00076)/.000030 MIN. OVERALL NICKEL UNDERPLATE: (0.00127)/.000050
 3. PRODUCT SPEC: PS-40-07
 4. PACKAGING SPECIFICATION: LOOSE TERMINALS PER PK-2759-001 CHAIN FORM TERMINALS PER PK-6459-001
 5. CRIMP IS FOR 22-30 GA WIRE WITH (1.57)/.082 DIA INSULATION MAX.
 6. INSERTION FORCE OF TERMINAL INTO (2.54)/.100 CENTERLINE CONNECTOR IS 2.5 LBS. MAX
 7. TERMINAL RETENTION IN HOUSING IS 28.7N / 6LBS MIN. WHEN PULLED AT THE RATE OF (125.4MM)/ 1 INCH PER MINUTE.
 8. DIMENSIONS GIVEN ABOVE CENTERLINES ARE SYMMETRICAL ABOUT THOSE CENTERLINES WITHIN HALF THE TOTAL TOLERANCE.
 9. THIS PART CONFORMS TO CLASS B REQUIREMENTS OF COSMETIC SPECIFICATION PS-45499-002

QUALITY SYMBOLS	GENERAL TOLERANCES (UNLESS SPECIFIED)		DIMENSION STYLE		SCALE	DESIGN UNITS	THIRD ANGLE PROJECTION
	mm	INCH	MM/IN	DATE			
▽=0	4 PLACES	±.010	---	---	INCH	INCH	③
▽=0	3 PLACES	±.025	---	---	MM/IN	MM/IN	
▽=0	2 PLACES	±.036	---	---			
▽=0	1 PLACE	±.051	---	---			
▽=0	0 PLACE	±.076	---	---			

ADD PK-6459-001	GENERAL TOLERANCES (UNLESS SPECIFIED)	DIMENSION STYLE	SCALE	DESIGN UNITS	THIRD ANGLE PROJECTION
EC NO. L1P724-001	mm INCH	MM/IN	INCH	INCH	③
DRN/CHK/APP/ 2013/07/18	4 PLACES ±.010	---	---	INCH	
CHK/DRN/CHK/APP/ 2013/07/18	3 PLACES ±.025	---	---	MM/IN	
APP/CHK/APP/ 2013/07/18	2 PLACES ±.036	---	---		
APP/CHK/APP/ 2013/07/18	1 PLACE ±.051	---	---		
APP/CHK/APP/ 2013/07/18	0 PLACE ±.076	---	---		

DATE	2012/03/20	DRAWN BY	SAMIEC	DATE	01/21/192
DATE	01/21/192	CHECKED BY	PATEL	DATE	01/21/192
DATE	01/21/192	APPROVED BY	FSM1TH	DATE	2012/03/20

ANGULAR	±1/2°	MATERIAL NO.	SEE CHART	DOCUMENT NO.	SD-6459
DRAFT WHERE APPLICABLE MUST REMAIN WITHIN DIMENSIONS		SIZE	D		

molex		SHEET NO.	1 OF 2
-------	--	-----------	--------

6459-(****)*

PART NO.	ENG. NO.
08-52-0101	6459-(P909)
08-52-0123	6459-(P909)L
08-65-0801	6459-(561)
	6459-(561)L
08-52-0118	6459-(222)
	6459-(222)L
08-65-0811	6459-(558)
08-65-0812	6459-(558)L
08-65-0815	6459-(555)
08-65-0816	6459-(555)L
08-65-0813	6459-(550)
08-65-0814	6459-(550)L
08-65-0817	6459-(231)
08-65-0818	6459-(231)L

SEE SHEET 1 EC NO. 087004-001 DR/WRK/UPPER 2010/07/18 CHK/BAKERSON 2010/07/18 APP/RESMITH 2010/07/24 H1 H1	QUALITY SYMBOLS	GENERAL TOLERANCES (UNLESS SPECIFIED)	DIMENSION STYLE	SCALE	DESIGN UNITS	THIRD ANGLE PROJECTION																																				
	$\nabla=0$ $\nabla=0$ $\nabla=0$	<table border="1"> <thead> <tr> <th></th> <th>mm</th> <th>INCH</th> </tr> </thead> <tbody> <tr> <td>4 PLACES</td> <td>±.005</td> <td>±.0002</td> </tr> <tr> <td>3 PLACES</td> <td>±.005</td> <td>±.010</td> </tr> <tr> <td>2 PLACES</td> <td>±0.25</td> <td>±.014</td> </tr> <tr> <td>1 PLACE</td> <td>±0.36</td> <td>±.014</td> </tr> <tr> <td>0 PLACE</td> <td>±.005</td> <td>±.014</td> </tr> </tbody> </table>		mm	INCH	4 PLACES	±.005	±.0002	3 PLACES	±.005	±.010	2 PLACES	±0.25	±.014	1 PLACE	±0.36	±.014	0 PLACE	±.005	±.014	<table border="1"> <thead> <tr> <th>DRAWN BY</th> <th>DATE</th> <th>TITLE</th> </tr> </thead> <tbody> <tr> <td>SAMIEC</td> <td>01/21/92</td> <td>KK (2.54)/100 CRIMP</td> </tr> <tr> <td>CHECKED BY</td> <td>DATE</td> <td>TERMINAL 22-30 GA WIRE</td> </tr> <tr> <td>PATEL</td> <td>01/21/92</td> <td>SAME AS 2759 EXCEPT MATL</td> </tr> <tr> <td>APPROVED BY</td> <td>DATE</td> <td></td> </tr> <tr> <td>FSMITH</td> <td>2012/03/20</td> <td></td> </tr> </tbody> </table>	DRAWN BY	DATE	TITLE	SAMIEC	01/21/92	KK (2.54)/100 CRIMP	CHECKED BY	DATE	TERMINAL 22-30 GA WIRE	PATEL	01/21/92	SAME AS 2759 EXCEPT MATL	APPROVED BY	DATE		FSMITH	2012/03/20		1:1	INCH	
		mm	INCH																																							
	4 PLACES	±.005	±.0002																																							
3 PLACES	±.005	±.010																																								
2 PLACES	±0.25	±.014																																								
1 PLACE	±0.36	±.014																																								
0 PLACE	±.005	±.014																																								
DRAWN BY	DATE	TITLE																																								
SAMIEC	01/21/92	KK (2.54)/100 CRIMP																																								
CHECKED BY	DATE	TERMINAL 22-30 GA WIRE																																								
PATEL	01/21/92	SAME AS 2759 EXCEPT MATL																																								
APPROVED BY	DATE																																									
FSMITH	2012/03/20																																									
	ANGULAR ±1/2°	DRAFT WHERE APPLICABLE MUST REMAIN WITHIN DIMENSIONS	MATERIAL NO.	DOCUMENT NO.																																						
			SEE CHART		SD-6459	SHEET NO. 2 OF 2																																				
			THIS DRAWING CONTAINS INFORMATION THAT IS PROPRIETARY TO MOLEX INCORPORATED AND SHOULD NOT BE USED WITHOUT WRITTEN PERMISSION																																							