

## Excellent Integrated System Limited

Stocking Distributor

Click to view price, real time Inventory, Delivery & Lifecycle Information:

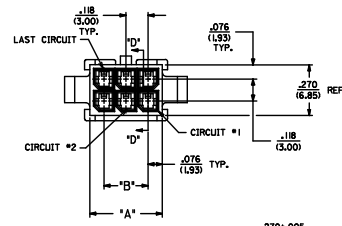
[Molex Connector Corporation](#)  
[43020-2201](#)

For any questions, you can email us directly:

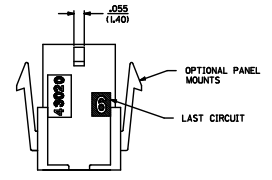
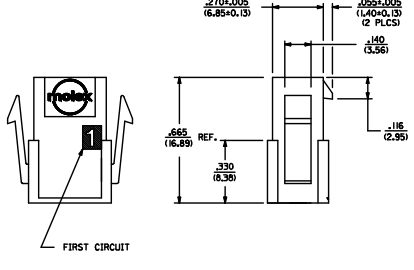
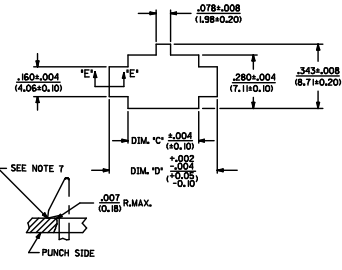
[sales@integrated-circuit.com](mailto:sales@integrated-circuit.com)

ASSEMBLY ITEM NUMBER	PART CHARACTERISTICS		MATERIAL
	NUMBER OF POSITION	PANEL MOUNT OPTION	
43020-0200	02	YES	"B"
43020-0201	02	NO	
43020-0400	04	YES	
43020-0401	04	NO	
43020-0600	06	YES	
43020-0601	06	NO	
43020-0800	08	YES	
43020-0801	08	NO	
43020-1000	10	YES	
43020-1001	10	NO	
43020-1200	12	YES	
43020-1201	12	NO	
43020-1400	14	YES	
43020-1401	14	NO	
43020-1600	16	YES	
43020-1601	16	NO	
43020-1800	18	YES	
43020-1801	18	NO	
43020-2000	20	YES	
43020-2001	20	NO	
43020-2200	22	YES	
43020-2201	22	NO	
43020-2400	24	YES	
43020-2401	24	NO	

CKT. NO.	DIM. "A"	DIM. "B"	DIM. "C"	DIM. "D"
2	.182(3.89)	N/A	.166(4.29)	.311(7.90)
4	.270(6.89)	.118(3.00)	.284(7.20)	.429(10.90)
6	.388(9.85)	.236(6.00)	.402(10.20)	.547(13.89)
8	.506(12.85)	.354(9.00)	.520(13.20)	.665(16.89)
10	.624(15.85)	.472(12.00)	.638(16.20)	.783(19.89)
12	.742(18.85)	.591(15.00)	.756(19.20)	.901(22.89)
14	.860(21.85)	.709(18.00)	.874(22.20)	1.019(25.88)
16	.978(24.85)	.827(21.00)	.992(25.20)	1.137(28.88)
18	1.096(27.85)	.945(24.00)	1.110(28.20)	1.255(31.88)
20	1.215(30.85)	1.063(27.00)	1.229(31.22)	1.373(34.87)
22	1.333(33.85)	1.181(30.00)	1.347(34.22)	1.491(37.87)
24	1.451(36.85)	1.299(33.00)	1.465(37.22)	1.609(40.87)

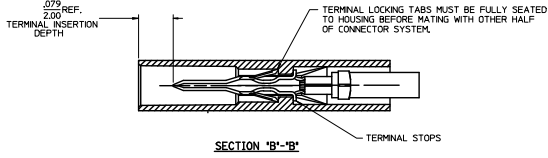


- NOTES:
- HOUSING MATERIAL:
    - "A" - UNFILLED POLYESTER, RATED UL, 94V-0, COLOR IS BLACK.
    - "B" - UNFILLED NYLON, RATED UL, 94V-0, HALOGEN-FREE, COLOR IS BLACK.
  - FINISH: N/A
  - PRODUCT SPECIFICATION: PS-43045
  - PACKAGING SPECIFICATION: PK-43020-001
  - THIS HOUSING MATES WITH MICRO-FIT RECEPTACLE #43025-\*\*\*\*
  - THIS HOUSING TO BE USED WITH MOLEX MALE TERMINAL #43031-\*\*\*\*
  - DESIGNED FOR .055(1.4) MINIMUM TO A .100(2.54) MAXIMUM THICK PANEL OR PRINTED CIRCUIT BOARD.
  - SEE SECTION "D"-D' FOR TERMINAL ORIENTATION IN HOUSING.
  - PANEL MOUNT FEATURES MUST LOCK ON SIDE OPPOSITE PUNCH SIDE FOR OPTIMUM RETENTION.
  - PART CONFORMS TO CLASS "B" REQUIREMENTS OF COSMETIC SPECIFICATION PS-45499-002. SOME HOUSINGS MAY HAVE A SMALL GATE BLEMISH NEAR THE GATE LOCATION THAT DOES NOT AFFECT FUNCTIONALITY.

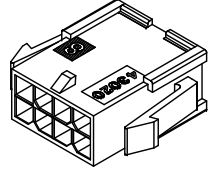


SECTION "E"-E'  
NO SCALE

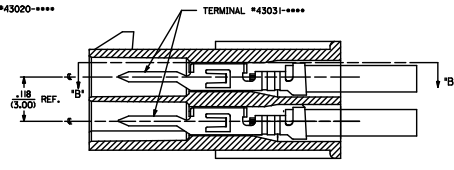
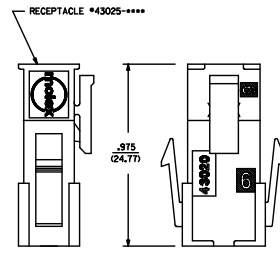
RECOMMENDED PANEL CUT-OUT



SECTION "B"-B'



PLUG WITH OPTIONAL PANEL MOUNTS  
ISO VIEW  
(8 CIRCUIT SHOWN)



MATED MICRO-FIT CONNECTOR

SECTION "D"-D'  
WITH TERMINAL  
SCALE: 8X

20-24 CUT MATL TO EC NO. LCP206-976 DRAWN: JDFX 205/11/09 CHECKED: JDFX 205/11/09 APPROVED: JDFX 205/11/09 DATE:	QUALITY SYMBOLS	GENERAL TOLERANCES (UNLESS SPECIFIED)	DRAWN BY	DATE	TITLE	DESIGN UNITS	THIRD ANGLE PROJECTION
	∇=0	4 PLACES ±.010	AFG	1993/01/07	MICRO-FIT(3.0) 2 THRU 24 CIRCUIT PLUG WITH OPTIONAL PANEL MOUNTS	METRIC	
	∇=0	3 PLACES ±.010	DATE				
	∇=0	2 PLACES ±0.25 ±.014	BAP	1993/01/07			
		1 PLACE ±0.35 ±.014	APPROVED BY	DATE			
		0 PLACE ±.014	DATE	2010/11/18			
		ANGULAR ±1/2°	MATERIAL NO.				
		DRAFT WHERE APPLICABLE MUST REMAIN WITHIN DIMENSIONS	SEE CHART				
			THIS DRAWING CONTAINS INFORMATION THAT IS PROPRIETARY TO MOLEX INCORPORATED AND SHOULD NOT BE USED WITHOUT WRITTEN PERMISSION				