

## Excellent Integrated System Limited

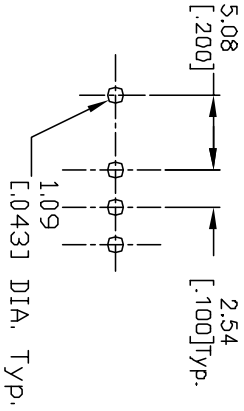
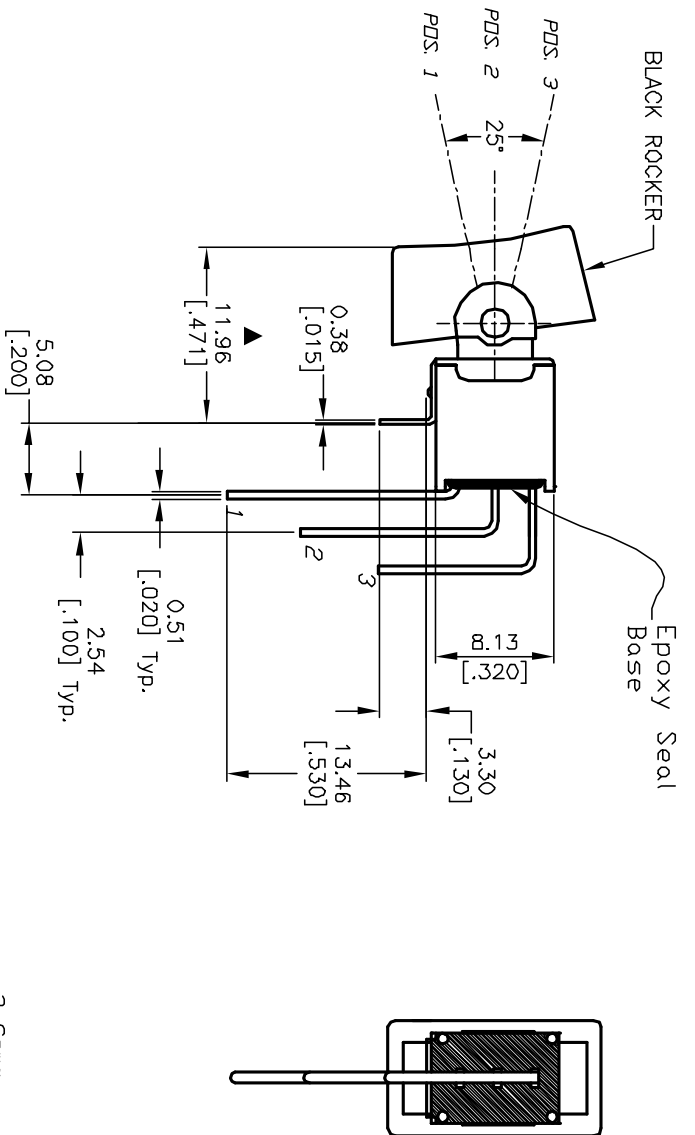
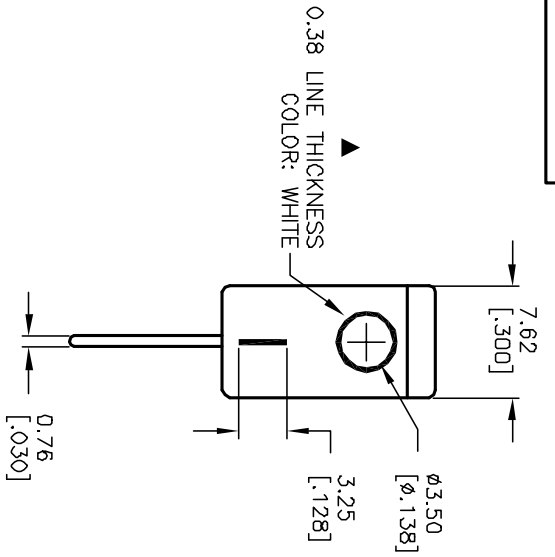
Stocking Distributor

Click to view price, real time Inventory, Delivery & Lifecycle Information:

[E-Switch](#)  
[400AWMSP1R1M7RE](#)

For any questions, you can email us directly:

[sales@integrated-circuit.com](mailto:sales@integrated-circuit.com)

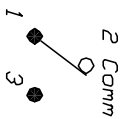


RECOMMENDED PCB LAYOUT

NOTES:

1. ALL DIMENSIONS IN MM [INCH]
2. GENERAL TOLERANCE: 0.0=±0.4  
0.00=±0.25
3. TERM. NOS. FOR REF. ONLY
4. RATING: 0.4 VA @ 20 VAC or DC MAX
5. ELECTRICAL LIFE: 30,000 make-and-break cycles at full load.
6. INSULATION RESISTANCE: 1000 mega-ohm typical
7. DIELECTRIC STRENGTH: 1,000 V RMS @sea level
8. OPERATING TEMP: -30°C to 85°C
9. ▲ DENOTES CRITICAL PARAMETER.

CIRCUIT: SPDT  
 CONTACT CONFIGURATION



SWITCH FUNCTION

POS. 1	POS. 2	POS. 3
ON	NONE	ON
2-3	OPEN	2-1

**E-SWITCH®**

REV.	ECN No.	DESCRIPTION	DATE	CHKD
A	13053	RELEASED FOR PRODUCTION	4/16/03	AR

TITLE	SCALE	DATE	DR	DWG	REV
400AWMSP1R1M7RE, I/O GRAPHICS	2:1	4/16/03	AR	T403012	A

THE INFORMATION CONTAINED IN THIS DOCUMENT IS PROPRIETARY TO E-SWITCH AND IS NOT TO BE COPIED OR TRANSFERRED