

## Excellent Integrated System Limited

Stocking Distributor

Click to view price, real time Inventory, Delivery & Lifecycle Information:

[Molex Connector Corporation](#)

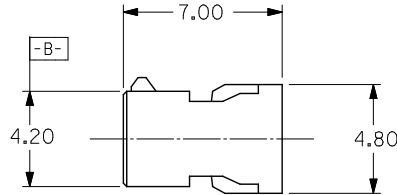
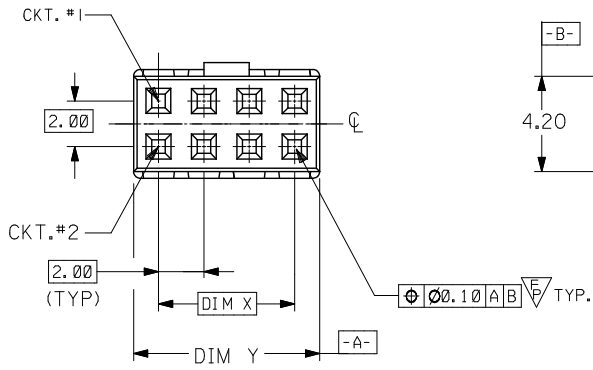
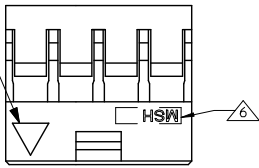
[0511100660](#)

For any questions, you can email us directly:

[sales@integrated-circuit.com](mailto:sales@integrated-circuit.com)

PART NUMBER	CKT SIZE	DIM X	DIM Y
51110-0460	4	2.00	4.20
51110-0660	6	4.00	6.20
51110-0860	8	6.00	8.20
51110-1060	10	8.00	10.20
51110-1260	12	10.00	12.20

IST CIRCUIT IDENTIFICATION



**LEGEND:**

51110 - \*\*60  
CKT SIZE

**NOTES :**

- MATERIAL : GLASS FILLED POLYESTER UL RATED 94V-0, COLOUR BLACK.
- FOR ILLUSTRATION PURPOSES, 8CKT CKT SIZE HOUSING IS AS SHOWN.
- PARTS TO BE USED WITH CRIMP TERMINAL PART NUMBER: 50394-8\*\*\*.
- APPLICABLE WIRE RANGE : AWG # 24 - #30"
- WIRE INSULATION RANGE : DIAMETER 1.40MM MAXIMUM.
- MSH LOGO, CAVITY ID AND 1ST CKT IDENTIFICATION TO BE LOCATED APPROXIMATELY AS SHOWN.

CHG MFG LOGO	EC NO: S2015-0352	DRAWN BY: 2014/12/09	CHKD: COLYNN GOH	APPR: KILLIM	REV	DESCRIPTION	QUALITY SYMBOLS		GENERAL TOLERANCES (UNLESS SPECIFIED)		DIMENSION STYLE		SCALE	DESIGN UNITS	THIRD ANGLE PROJECTION		
							mm	INCH	mm	INCH	MM ONLY	DATE				TITLE	
							∇=0	±	---	±	---	DRAWN BY: SEE	DATE: 1995/05/22	2MM GRID,WTB CONN. CRIMP RECEPT. HSG.	molex		
							∇=0	±	0.20	±	---	CHECKED BY: SK TOH	DATE: 1995/08/15			MATERIAL NO. SEE TABLE	DOCUMENT NO. SD-51110-***60
							∇=1	±	---	±	---	APPROVED BY:	DATE:				
A1							ANGULAR ± 3°		DRAFT WHERE APPLICABLE MUST REMAIN WITHIN DIMENSIONS		SIZE A3		THIS DRAWING CONTAINS INFORMATION THAT IS PROPRIETARY TO MOLEX INCORPORATED AND SHOULD NOT BE USED WITHOUT WRITTEN PERMISSION				