

Excellent Integrated System Limited

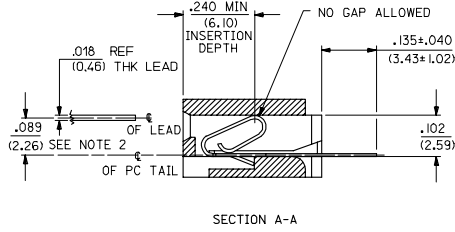
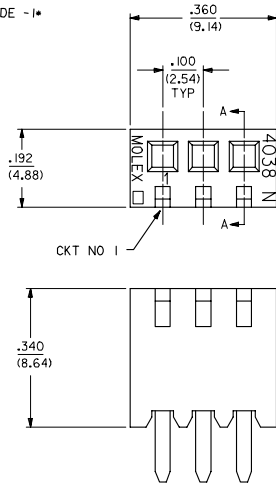
Stocking Distributor

Click to view price, real time Inventory, Delivery & Lifecycle Information:

[Molex Connector Corporation](#)
[10-18-2031](#)

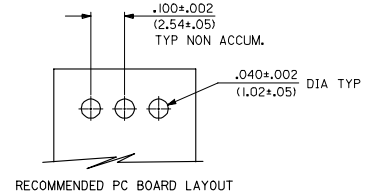
For any questions, you can email us directly:
sales@integrated-circuit.com

OPTION CODE -1*

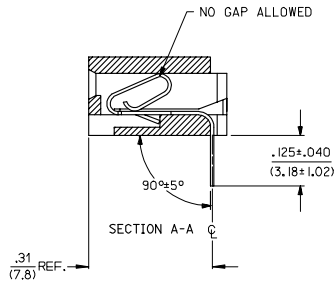
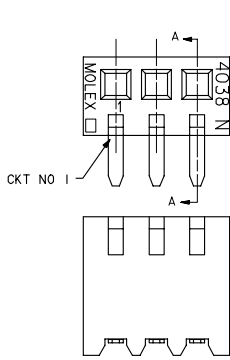


NOTES:

1. MATERIAL: GLASS FILLED POLYESTER 94V-0 COLOR WHITE.
2. PLATINGS:
P909 - HOT TIN DIP; .000100/(0.00254) MIN.
* THE PRIMARY SHIPPING CARTON WILL BE LABELED "COMPLIANT TO RoHS DIRECTIVE 2002/95/EC AND ELV ANNEX II OF DIRECTIVE 2000/53/EC". CARTONS WITHOUT THIS LABEL MAY CONTAIN PRODUCT WITH TIN/LEAD PLATING.
3. PRODUCT SPECIFICATION: NONE
4. PACKAGING: BULK
5. TERMINAL TO HOUSING RETENTION FORCE: 3 LBS. MIN.
6. CONNECTORS ARE NOT STACKABLE ON .100/(2.54) CENTERS.
7. TERMINALS CONFORM TO SOLDERABILITY SPECIFICATION SMES-152.
8. .085/(2.16) DIM. WILL VARY DEPENDING ON LEAD THICKNESS.



OPTION CODE -2*



4038-N*
ASSEMBLY OPTION CODE
1= STRAIGHT
2= RIGHT ANGLE
TERMINAL SEE CHART

2	D
1	D1
SHT. REV.	

ADD DIMENSION ECL NO: UCF2007-0731 DRAWN BY: 2006/09/25 CHKD BY: 2006/10/03 APPROV: 2006/10/17	QUALITY SYMBOLS	GENERAL TOLERANCES (UNLESS SPECIFIED)	DIMENSION STYLE IN/MM	SCALE 1:1	DESIGN UNITS INCH	THIRD ANGLE PROJECTION
	▽=0	4 PLACES ±.010 ±.010	DRAWN BY DATE SAMIEC 1992/01/10	TITLE TRANSISTOR SOCKET ASSY 4038 SERIES DWG.		
	▽=0	3 PLACES ±.010 ±.010	CHECKED BY DATE PATEL 1992/01/10	MATERIAL NO. MOLEX INCORPORATED		
	▽=0	2 PLACES ±.025 ±.014	APPROVED BY DATE LENZ 1992/01/10	DOCUMENT NO. SDA-4038		
		1 PLACE ±.036 ±.014	DRAFT WHERE APPLICABLE MUST REMAIN WITHIN DIMENSIONS			SHEET NO. 1 OF 2
		ANGULAR ±1/2°	SIZE C THIS DRAWING CONTAINS INFORMATION THAT IS PROPRIETARY TO MOLEX INCORPORATED AND SHOULD NOT BE USED WITHOUT WRITTEN PERMISSION			



Distributor of Molex Connector Corporation: Excellent Integrated System Limited

Datasheet of 10-18-2031 - CONN SOCKET TRANSIST TO-220 3POS

Contact us: sales@integrated-circuit.com Website: www.integrated-circuit.com

EDP NO.	ENG. NO.	HOUSING NO.	TERMINAL NO
10-18-2031	A-4038 - 1	4038	2793-ATL (P909) BRASS
10-18-2034	A-4038 - 1A	4038	7470-(102)L PHOS BRONZE
10-18-2035	A-4038 - 1J	4038	7470-(122)L PHOS BRONZE
10-18-2032	A-4038 - 2	4038	2793-ATL (P909) BRASS
- -	A- -	-	-
- -	A- -	-	-
- -	A- -	-	-
- -	A- -	-	-
- -	A- -	-	-
- -	A- -	-	-
- -	A- -	-	-
- -	A- -	-	-
- -	A- -	-	-

13	12	11	10	9	8	7	6	5	4	3	2	1												
<p style="text-align: right;">4038</p>																								
<p>UNLESS OTHERWISE SPECIFIED TOLERANCES SHOWN ARE: INCH = 1/32" METRIC = .0125"</p> <p>3 RAKE ± * 2 RAKE ± * 1 RAKE ± *</p> <p>DATE: 1/13/92 SHEET NO: 2 OF 2 DRAWING NO: SDA-4038 PART NO: 540038X2</p> <p>THIS DRAWING CONTAINS INFORMATION THAT IS PROPRIETARY TO MOLEX INC. AND SHOULD NOT BE USED WITHOUT WRITTEN PERMISSION.</p>																								
<p>SEE SHEET 1 SEE SHEET 1 SEE SHEET 1 SEE SHEET 1 SEE SHEET 1 SEE SHEET 1 SEE SHEET 1 SEE SHEET 1 SEE SHEET 1 SEE SHEET 1 SEE SHEET 1 SEE SHEET 1 SEE SHEET 1</p>																								
<p>REVISIONS</p> <table border="1"> <tr> <th>NO.</th> <th>DATE</th> <th>BY</th> <th>REVISIONS</th> </tr> <tr> <td>1</td> <td></td> <td>SAJ</td> <td>ISSUE FOR PATEL</td> </tr> <tr> <td>2</td> <td></td> <td>LENZ</td> <td>REVISIONS</td> </tr> </table>													NO.	DATE	BY	REVISIONS	1		SAJ	ISSUE FOR PATEL	2		LENZ	REVISIONS
NO.	DATE	BY	REVISIONS																					
1		SAJ	ISSUE FOR PATEL																					
2		LENZ	REVISIONS																					
<p>4038</p>																								