

Excellent Integrated System Limited

Stocking Distributor

Click to view price, real time Inventory, Delivery & Lifecycle Information:

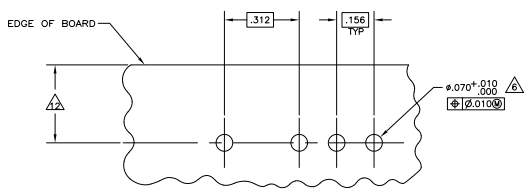
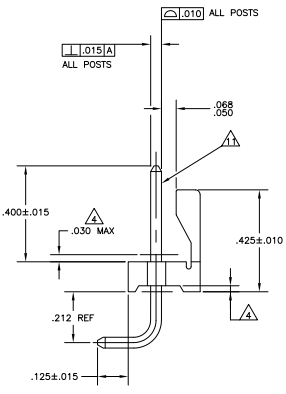
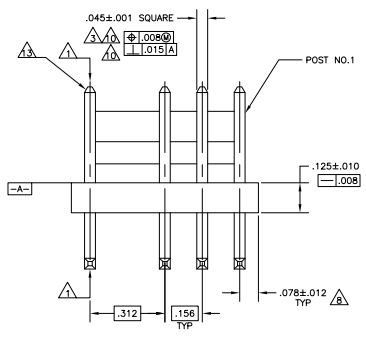
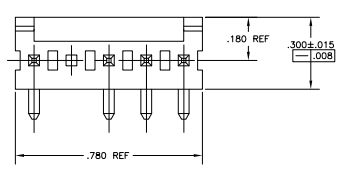
[TE Connectivity AMP Connectors](#)
[644062-5](#)

For any questions, you can email us directly:

sales@integrated-circuit.com

THIS DRAWING IS UNCONTROLLED UNLESS INDICATED OTHERWISE BY THIS DRAWING'S CONTROLS. ALL RIGHTS RESERVED.

REV	DATE	DESCRIPTION	BY	CHK
00	00			
01		REVISED PER ESD-08-000001		



- △ POST TO WITHSTAND 13 NEWTONS (3LBS.) MIN. AXIAL FORCE IN BOTH DIRECTIONS SHOWN WITHOUT DISLODGING.
- △ TOLERANCES APPLY TO SOLDER SIDE OF BOARD.
- △ MEASURED AT SURFACE $\overline{A-A}$
- △ PLASTIC FLASH PERMITTED IN THIS AREA.
- 5 PARTS COMPLY WITH AMP SOLDERABILITY SPEC. NO. 109-11-2.
- △ ONE HOLE MAY BE UNDERSIZED (.065 - .060 DIA.) FOR ASSEMBLY RETENTION DURING WAVE SOLDERING.
- △ MATERIAL: HEADER-THERMOPLASTIC POLYESTER NON-FILLED 94V-0(NATURAL) POST-COPPER ALLOY (TIN PLATED)
- △ COORDINATE DIMENSION APPLIES FROM CENTER OF ACTUAL FEATURE.
- 9 PLASTIC BURRS CAUSED BY CUT-OFF TOOLING ARE PERMITTED WITHIN THE MAXIMUM TOLERANCE ENVELOPE.
- △ POST TO BE MEASURED WHEN STRIP IS HELD FLAT.
- △ POST MUST WITHSTAND TWO 90° BENDS AGAINST EXTRUSION WITHOUT BREAKING.
- △ DIMENSION SHOULD BE .325-.400 WHEN MATING WITH A MTA 156 CONNECTOR ASSEMBLY OR .325-.345 WHEN MATING WITH A SI-156 CONNECTOR ASSEMBLY.
- △ FIN BURR OF .005 MAX. VERTICAL AND .003 MAX. HORIZONTAL PERMITTED AT POST TIPS ON BOTH ENDS.

METRIC

.068	1.73		
.065	1.65	.780	19.81
.063	1.60	.450	11.43
.060	1.52	.425	10.80
.045	1.14	.400	10.16
.030	0.76	.345	8.76
.015	0.38	.325	8.26
.012	0.30	.312	7.92
.011	0.28	.300	7.62
.010	0.25	.212	5.38
.008	0.20	.180	4.57
.005	0.13	.156	3.96
.003	0.08	.125	3.18
.001	0.03	.078	1.98
.000	0.00	.070	1.78
[IN]	MM	[IN]	MM

644062-2 SHOWN

POST NUMBER	PART NUMBER
2, 3 & 4	644062-5
2 & 3	644062-4
2 & 4	644062-3
4	644062-2
2	644062-1
POST NUMBER OMITTED	

REVISION	DATE	DESCRIPTION	BY	CHK
1	00779	644062		

CUSTOMER DRAWING

CONVERSION TABLE