

Excellent Integrated System Limited

Stocking Distributor

Click to view price, real time Inventory, Delivery & Lifecycle Information:

[BUD Industries, Inc.](#)

[CN-6708](#)

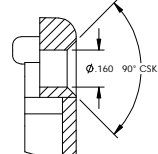
For any questions, you can email us directly:

sales@integrated-circuit.com

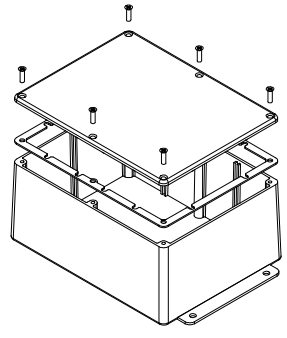
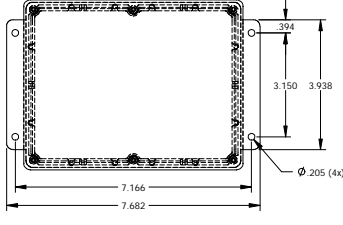
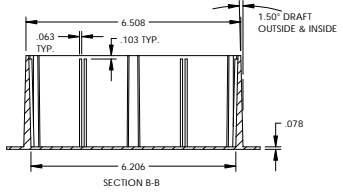
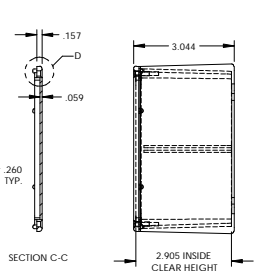
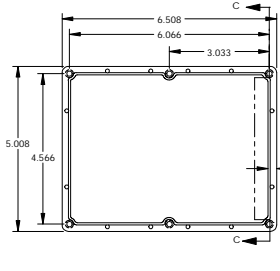
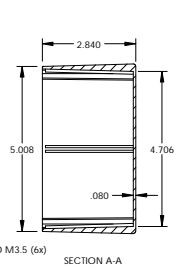
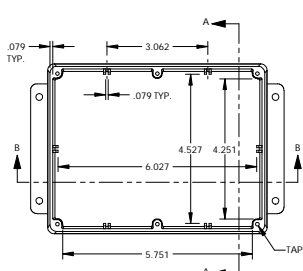
THE INFORMATION CONTAINED IN THIS DRAWING IS THE SOLE PROPERTY OF BUD INDUSTRIES, INC. ANY REPRODUCTION IN PART OR WHOLE WITHOUT THE WRITTEN PERMISSION OF BUD INDUSTRIES, INC. IS PROHIBITED.

MATERIAL - ALUMINUM ALLOY #ADC-12
FINISH - NATURAL (CONTACT BUD FACTORY FOR ALTERNATE FINISHES)
GASKET - RATED IP65 NEOPRENE, SELF-ADHESIVE, 3mm THICK, COLOR BLACK
SCREWS - STAINLESS STEEL, M3.5 x 12mm LG., CSK. HEAD, SELF-THREADING

ALL HOLE DIAMETERS HAVE ±.005 TOLERANCE.
ALL OTHER DIMENSIONS HAVE ±.015 TOLERANCE.
ENCLOSURES ARE SHIPPED UNASSEMBLED WITH ALL ITEMS SHOWN.



CN-6708	
ISSUE	REVISIONS



COVER

PARTS LIST	
QTY	DESCRIPTION
1	ENCLOSURE BODY
1	ENCLOSURE COVER
4	M3.5 X 12MM LG. STAINLESS STEEL SELF-THREADING SCREWS
1	3MM THICK NEOPRENE GASKET
BUD INDUSTRIES INC.	
DIE CAST ALUMINUM ENCLOSURE	
CN-6708	