

Excellent Integrated System Limited

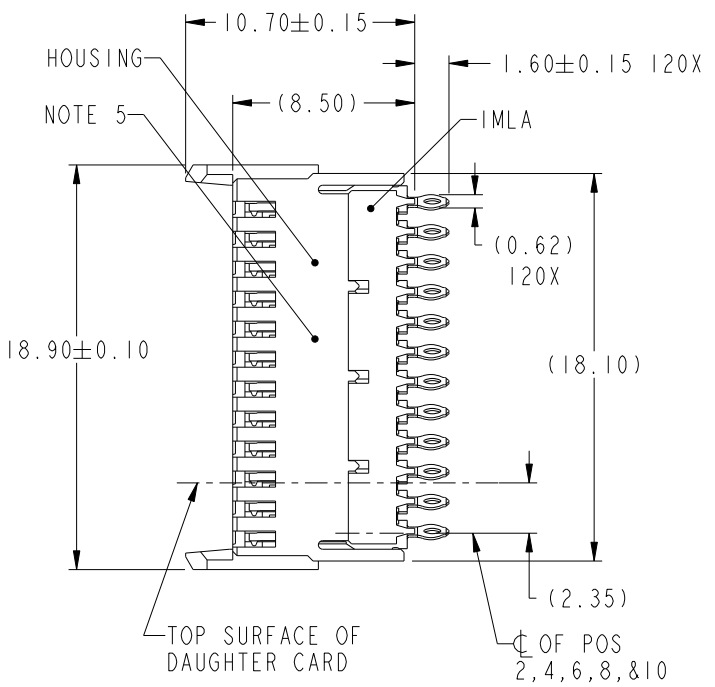
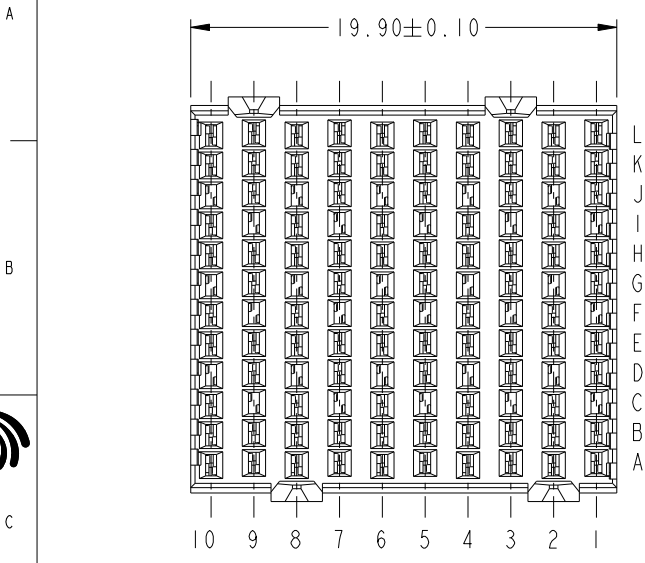
Stocking Distributor

Click to view price, real time Inventory, Delivery & Lifecycle Information:

[FCI](#)
[10028264-101LF](#)

For any questions, you can email us directly:
sales@integrated-circuit.com

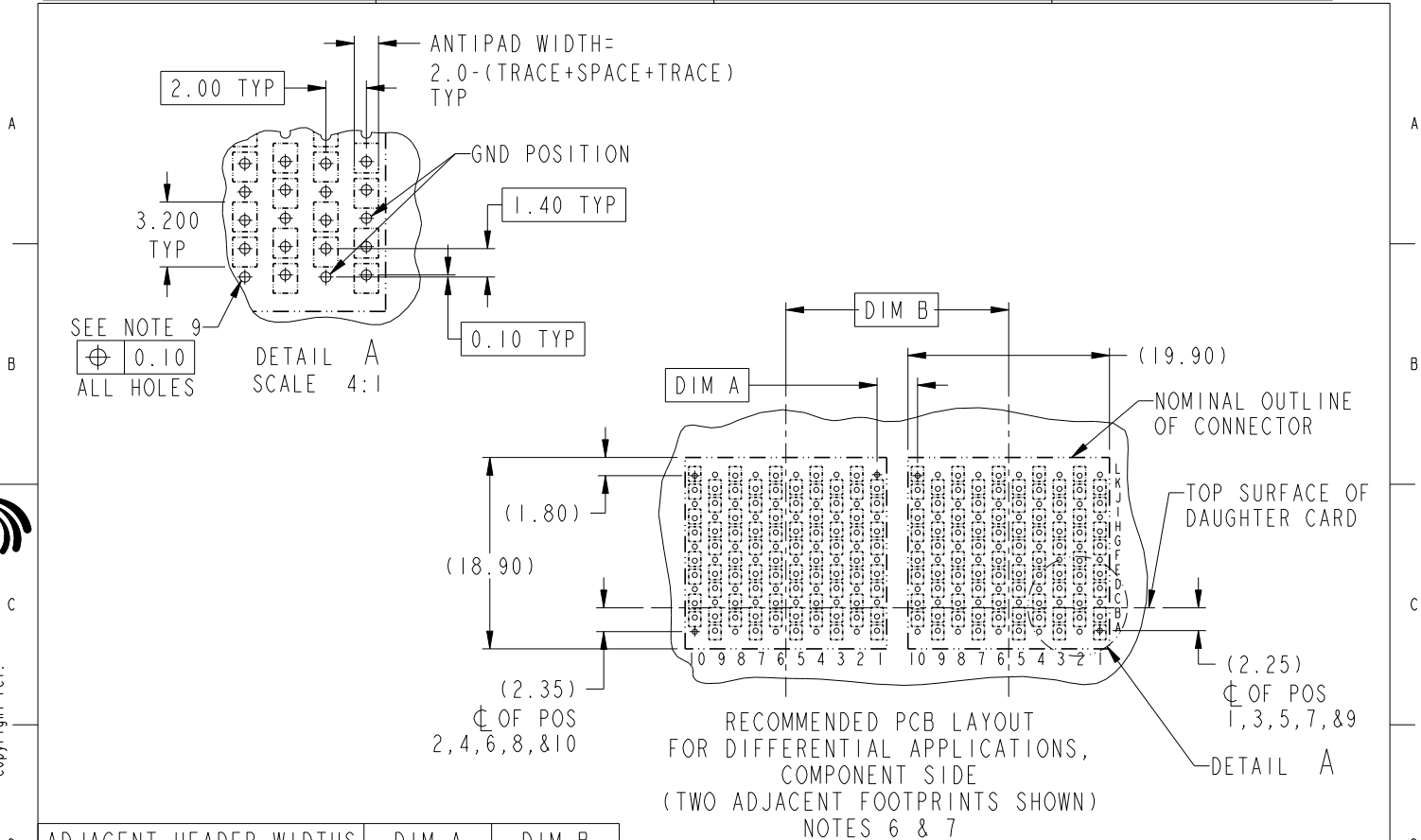
PRODUCT NUMBER
SEE TABLE, SHEET 4



Copyright FCI.

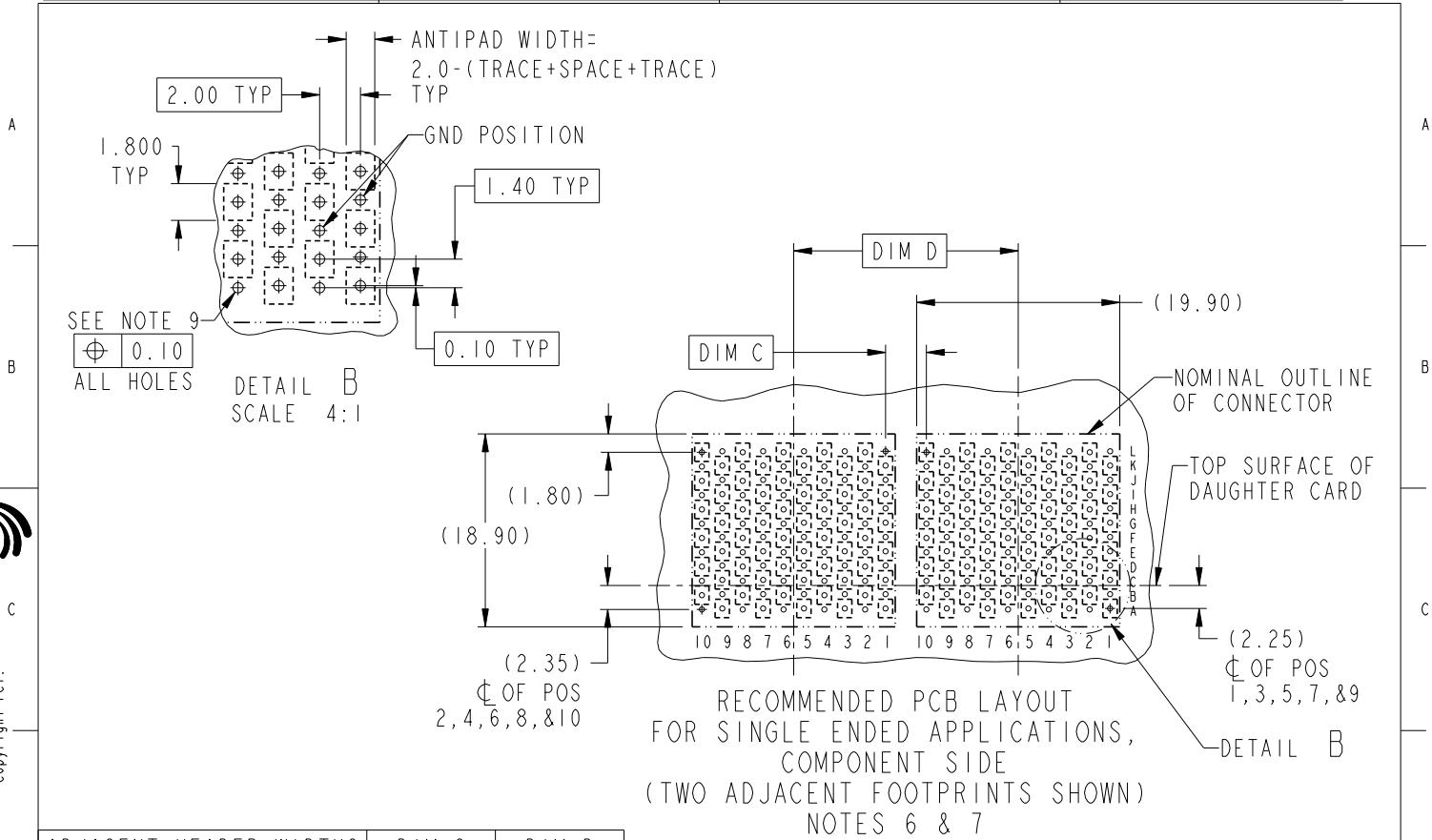
www.fciconnect.com				surface - ASME Y14.5	tolerance - ASME Y14.5	std	projection	MM
				TOLERANCES UNLESS OTHERWISE SPECIFIED				
Dr	T. HOUTZ	2005-06-30	ANGULAR	LINEAR	0.X	±	size	A4
Eng	C. SHELLY	2005-06-30			0.XX	±		Scale
Chr	C. H. TAN	2007-04-05	0° ±'		0.XXX	±		4:1
Appr	JOEY NG	2007-04-05	Product family		AirMax VS		ECN	***
			Product family		AirMax VS		Spec ref	
FCI			AirMax VS VERT RECPT ASSY		10028264		Rev.	A
			PRESS-FIT, 120 POSITION, 20mm		CUSTOMER		sheet	1 of 4
			catalog no					

REV F - 2006-06-17



ADJACENT HEADER WIDTHS	DIM A	DIM B
20MM/20MM	2.00	20.00
20MM/22MM	3.00	21.00
22MM/22MM	4.00	22.00

FCI	title	AirMax VS VERT RECPT ASSY	desig no	10028264	Rev.	A
	catalog no	PRESS-FIT, 120 POSITION, 20mm	CUSTOMER	sheet 2 of 4		



ADJACENT HEADER WIDTHS	DIM C	DIM D
20MM/20MM	2.00	20.00
20MM/22MM	3.00	21.00
22MM/22MM	4.00	22.00

FCI	title	AirMax VS VERT RECPT ASSY	dag no	10028264	Rev.	A
	catalog no	PRESS-FIT, 120 POSITION, 20mm	CUSTOMER	sheet 3 of 4		

A

PART NUMBER	PRESS-FIT TAIL PLATING TYPE
10028264-101	TIN/LEAD ALLOY OVER NICKEL
10028264-101LF	TIN OVER NICKEL (LEAD FREE)

B

NOTES:

①. CONNECTOR MATERIALS:
 HOUSING: HIGH TEMP THERMOPLASTIC, NATURAL, UL94V-0
 IMLA PLASTIC: HIGH TEMP THERMOPLASTIC, BLACK, UL94V-0
 CONTACT: COPPER ALLOY

2. CONTACT PLATING:
 SEPARABLE INTERFACE:
 PERFORMANCE-BASED PLATING, QUALIFIED TO MEET THE REQUIREMENTS OF FCI PRODUCT SPECIFICATION GS-12-239, INCLUDING TELCORDIA GR-1217-CORE (NOVEMBER 1995) CENTRAL OFFICE.
 PRESS-FIT TAILS: SEE TABLE

3. PRODUCT SPECIFICATION: GS-12-239

4. APPLICATION SPECIFICATION: GS-20-035

⑤. PRODUCT MARKING, (PART NUMBER & LOT CODE), ON THIS SURFACE

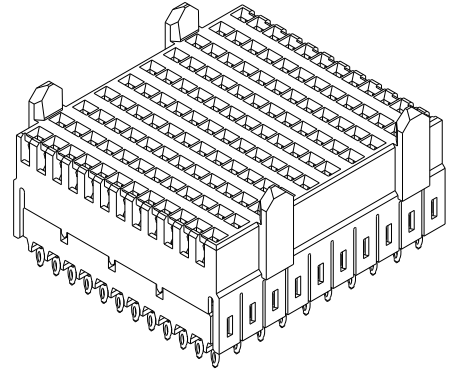
⑥. REFER TO CUSTOMER DRAWING 10035911 FOR INFORMATION REGARDING PCB LAYOUT OF POWER AND GUIDE MODULES RELATIVE TO SIGNAL MODULES

⑦. POSITION F OF ODD NUMBERED COLUMNS AND POSITION G OF EVEN NUMBERED COLUMNS CORRESPOND TO EARLY MATE HEADER PINS

8. THERE IS NO GROUND BUSSING WITHIN THE CONNECTOR SYSTEM

⑨. SEE CUSTOMER DRAWING 10045979 FOR INFORMATION ON PCB HOLE DIAMETER AND PLATING OPTIONS

10. THIS PRODUCT MEETS EUROPEAN UNION DIRECTIVES AND OTHER COUNTRY REGULATIONS AS DESCRIBED IN GS-22-008



11. THE HOUSING WILL WITHSTAND EXPOSURE TO 260°C PEAK TEMPERATURE FOR 40 SECONDS IN A CONVECTION, INFRA-RED OR VAPOR PHASE REFLOW OVEN

12. PACKAGING MEETS GS-14-920 LEAD FREE LABELING SPECIFICATION

C

Copyright FCI.

D

FCI	title	AirMax VS VERT RCPT ASSY	desig no	10028264	Rev.	A
	catalog no	-	CUSTOMER	sheet 4 of 4		

REV F - 2006-06-17

1

2

PDM: Rev:A

STATUS: Released

4 Printed: Nov 30, 2010