

Excellent Integrated System Limited

Stocking Distributor

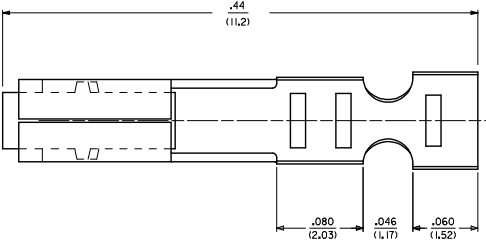
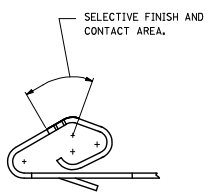
Click to view price, real time Inventory, Delivery & Lifecycle Information:

[Molex Connector Corporation](#)
[0008550129](#)

For any questions, you can email us directly:
sales@integrated-circuit.com

7879-1(***)*		7879-2(***)*	
PART NO.	ENG. NO	PART NO.	ENG. NO
08-55-0124	7879-1P208L	50-29-1744	7879-2P228L
08-55-0129	7879-1P208L	50-29-1745	7879-2P228L
		46999-0460	7879-2IP154
		46999-0461	7879-2IP154L
50-29-1900	7879-1P154L		
46999-0101	7879-1P154L		

- NOTES:
1. MATERIAL: SEE LEGEND.
 2. FINISH: SEE LEGEND.
 3. THIS PART CONFORMS TO PRODUCT SPEC. 7879.
 4. PACKAGING SPECIFICATION: SEE LEGEND
 5. CRIMP FOR 24-30 AWG. WIRE WITH .060/(1.52) MAX. INSULATION DIA.
 6. THIS TERMINAL TO BE USED IN 7880 HOUSING.
 7. DIMENSIONS GIVEN ACROSS CENTERLINES ARE SYMMETRICAL ABOUT THOSE CENTERLINES WITHIN HALF THE TOTAL TOLERANCE.
 8. CRIMP WILL ACCEPT 22 AWG. WIRE WITH .062/(1.57) MAX. INSULATION DIA.
 9. THIS PART CONFORMS TO CLASS B REQUIREMENTS OF COSMETIC SPECIFICATION PS-45499-002.



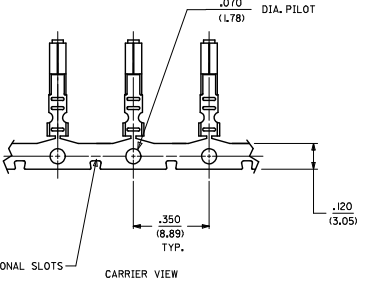
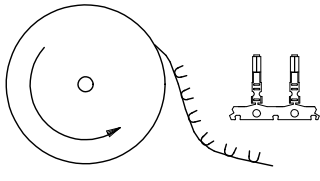
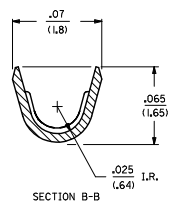
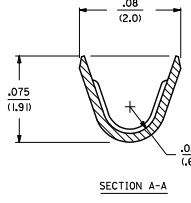
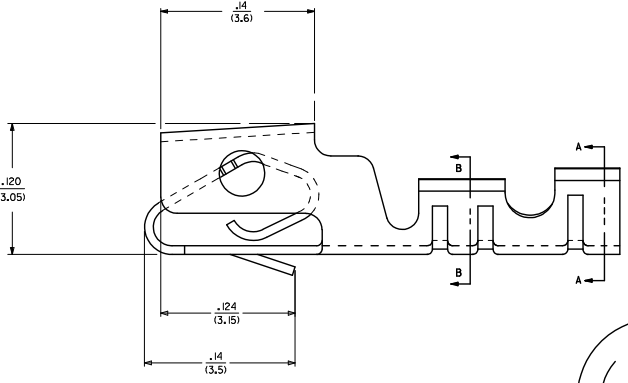
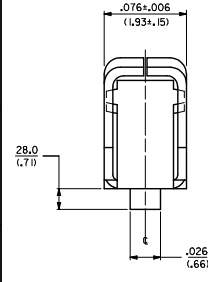
LEGEND:

7879-x(***)*

FORM
 BLANK = REEL. PER WINDING DETAIL B. SEE PK-7879-001
 L = LOOSE. PER PK-2759-001

MATERIAL
 .008/ (0.20) THICK
 1 = BRASS
 2 = PHOS. BRONZE

PLATING
 (P154) OVERALL TIN: .000100/(0.00254) MIN. OVERALL NICKEL UNDERPLATE: .000050/(0.00127) MIN. SELECT GOLD: .00015/(0.0038) MIN.
 (P208) OVERALL TIN: .000100/(0.00254) MIN. OVERALL NICKEL UNDERPLATE: .000050/(0.00127) MIN. SELECT GOLD: .000030/(0.00076) MIN.
 (P228) OVERALL TIN: .000100/(0.00254) MIN. OVERALL NICKEL UNDERPLATE: .000050/(0.00127) MIN. SELECT GOLD: .000030/(0.00076) MIN.



ADD PK SPEC REC NO: UCP2015-1323 DRAWN BY: CHKORAKIPER CHECKED BY: APPRECIANTH DATE: 2014/09/29 DATE: 2014/09/28 DATE: 2014/10/13	QUALITY SYMBOLS ∇=0 ∇=0 ∇=0	GENERAL TOLERANCES (UNLESS SPECIFIED)		DIMENSION STYLE		SCALE	DESIGN UNITS	THIRD ANGLE PROJECTION	
				IN/MM		---	INCH		
		4 PLACES ±	---	DRAWN BY	DATE	TITLE			
		3 PLACES ±	---	GUZIK	12/22/88	(2.54)/100 KK, CRIMP TYPE SHROUDED TERMINAL			
2 PLACES ±	0.25	CHECKED BY	DATE						
1 PLACE ±	0.36	PATEL	12/22/88						
0 PLACE ±		APPROVED BY	DATE	MATERIAL NO.	DOCUMENT NO.	SHEET NO.			
		LENZ	12/22/88	SEE CHART	SD-7879	1 OF 1			
ANGULAR ±1/2°		DRAFT WHERE APPLICABLE MUST REMAIN WITHIN DIMENSIONS		THIS DRAWING CONTAINS INFORMATION THAT IS PROPRIETARY TO MOLEX INCORPORATED AND SHOULD NOT BE USED WITHOUT WRITTEN PERMISSION					