

Excellent Integrated System Limited

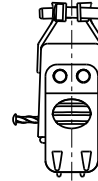
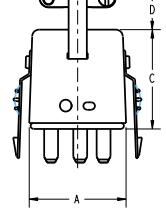
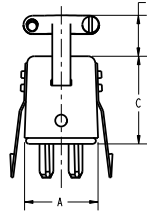
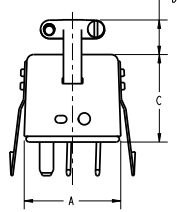
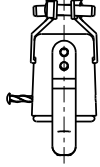
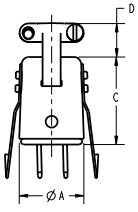
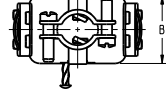
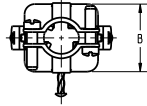
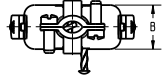
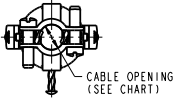
Stocking Distributor

Click to view price, real time Inventory, Delivery & Lifecycle Information:

[Bel Fuse Inc.](#)
[P-302H-CCTL](#)

For any questions, you can email us directly:
sales@integrated-circuit.com

DRAWING REVISIONS			
REV	DOCUMENT	APP	DATE
I	DO 06-1067		



TYPE 1

TYPE 2

TYPE 3

TYPE 4

PART NUMBER	TYPE	A REF	B REF	C REF	D REF	CABLE OPENING REF	FACTORY NUMBER
P-302H-CCT-L	1	Ø .691 [Ø 17.55]	-	.953 [24.21]	.359 [9.12]	.375 [9.53]	703 01 02 003
P-303H-CCT-L	2	1.034 [26.26]	.472 [11.99]	.953 [24.21]	.359 [9.12]	.313 [7.95]	703 01 03 003
P-304H-CCT-L	3	.786 [19.96]	.724 [18.39]	.953 [24.21]	.468 [11.89]	.375 [9.53]	703 01 04 003
P-306H-CCT-L	4	1.036 [26.31]	.724 [18.39]	1.078 [27.38]	.484 [12.29]	.438 [11.13]	703 01 06 003

NOTES:

1. SPECIFICATIONS:

ELECTRICAL:
 OPERATING VOLTAGE: 250 VAC RMS
 CURRENT RATING: 10 AMPS
 CONTACT RESISTANCE: 16 MILLIOHMS MAX

INSULATOR, CAP, RIVET: GENERAL PURPOSE PHENOLIC, BLACK

CONTACT: BRASS, MATTE TIN

BRACKET, SCREW, LOCK, DRIVE PIN: STEEL, ZINC WITH CLEAR TRIVALENT CHROMATE

ENVIRONMENTAL:
 OPERATING TEMPERATURE: UP TO +105°C

TERMINATION: SOLDER

2. DIMENSIONS IN [] ARE IN MILLIMETERS

3. ALL DIMENSIONS ARE REFERENCE

RoHS COMPLIANT

UNITS		PRO/E		Cinch	
ENGLISH	INCHES	DATE	FILE	1300 FINLEY RD LOWHARD, FL 32748	
DO NOT SCALE DRAWING		DESIGN BY: JIMENEZ	DATE: 6/19/06	TITLE: PLUG ASSEMBLY, CABLE CLAMP TOP W/LOCKS	
UNLESS OTHERWISE SPECIFIED: DIMENSIONS ARE IN INCHES TOLERANCES: FRACTIONAL DECIMAL ANGULAR		DESIGN ENGINEER: A. BALI	DATE: 6/19/06	MATERIAL:	CONTROL SPEC NUMBER: 06-1067
THIS DOCUMENT IS THE PROPERTY OF CINCH. NO PART OF THIS DOCUMENT CONTAINED HEREIN IS TO BE REPRODUCED OR TRANSMITTED IN ANY FORM OR BY ANY MEANS WITHOUT THE WRITTEN CONSENT OF CINCH.		DESIGN ENGINEERING MGR:		MATERIAL SPEC NUMBER:	PROJECT NUMBER: CI4789-1
		MFG. ENGINEERING:		CAD FILE NUMBER: P302HCCTL	DRAWING NUMBER: P-302H-CCT-L
		QUALITY ASSURANCE:		CAGE IDENT NO: 71785	SCALE: 1:1 SHEET 1 OF 1