

## Excellent Integrated System Limited

Stocking Distributor

Click to view price, real time Inventory, Delivery & Lifecycle Information:

[Pulse Electronics Corporation](#)

[FL1012NL](#)

For any questions, you can email us directly:

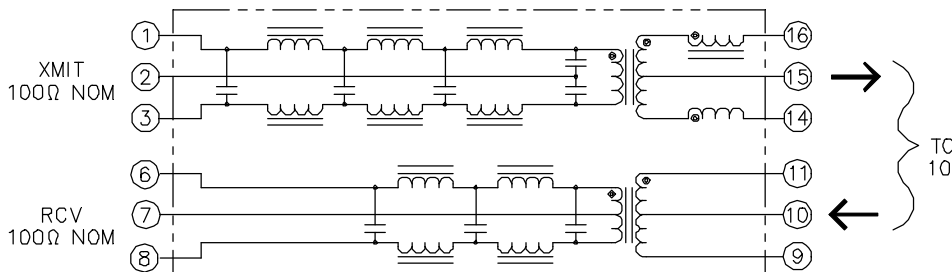
[sales@integrated-circuit.com](mailto:sales@integrated-circuit.com)



# FL1012

Rev

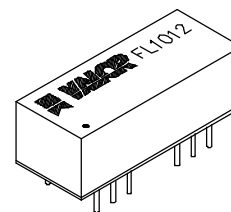
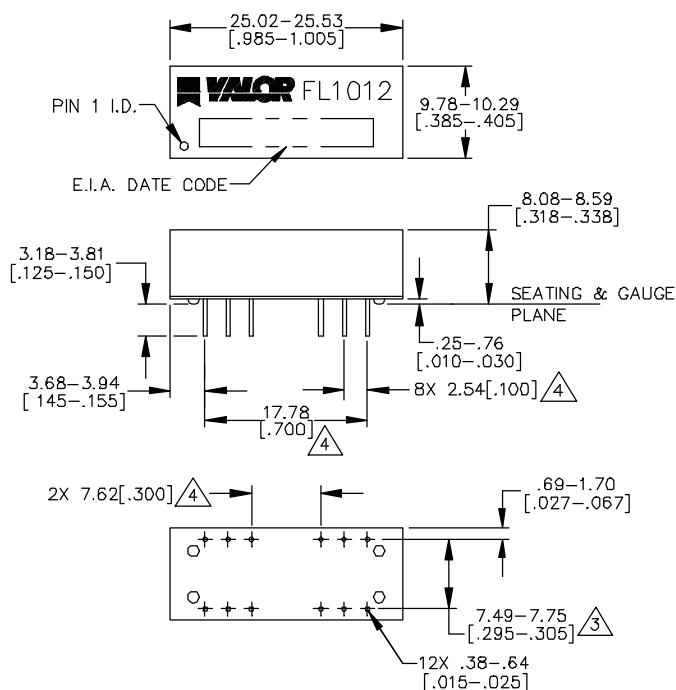
## Electrical



### ELECTRICAL SPECIFICATIONS @ 25°C

TYPE	TRANSMITTER FILTER: : 7 POLE,	RECEIVER FILTER: : 5 POLE, BALANCED LOW-PASS, 100Ω
*CUT-OFF FREQ	: 17MHz ± 1MHz	: 17MHz ± 1MHz
INSERTION LOSS (1-10MHZ)	: 1.0dB MAX	: 0.8dB MAX
*ATTENUATION@ 20MHz	: 7dB MIN	: 6dB MIN
@ 25MHz	: 19dB MIN	: 14dB MIN
@ 30MHz	: 30dB MIN	: 20dB MIN
@ 40MHz	: 32dB MIN	: 31dB MIN
HIPOT	: 1500VRMS FOR 1 MINUTE PINS 1,2 & 3 TO 14,15 & 16	: 1500VRMS FOR 1 MINUTE PINS 6,7 & 8 TO 9,10 & 11
DCR	: 5Ω MAX (14-15)	: .5Ω MAX (6-7)
COMMON MODE		: .1Ω MAX (9-10)
REJECTION (30-100MHZ)	: 30dB MIN	: 30dB MIN
RETURN LOSS (5-10MHZ)	: 17dB MIN	: 17dB MIN
(MEASURED WITH SOURCE IMPEDANCE RANGING FROM 85-100Ω)		
TRANSMITTER TO RECEIVER CHARACTERISTICS		
CROSS TALK ATTEN (1-10MHZ)	: BETWEEN CHANNELS	: 30dB MIN
	: 200VRMS FOR 1 MINUTE	
*REFERENCED TO FILTER	PINS 1 & 3 TO 6 & 8	
OUTPUT @ 5.0MHz.	1 & 3 TO 9 & 11	
	6 & 8 TO 14 & 16	

## Mechanical



WEBSITE [www.valorinc.com](http://www.valorinc.com) E-MAIL [marketing@valorinc.com](mailto:marketing@valorinc.com)

**NORTH AMERICA**  
 tel 1-800-31 VALOR  
 fax 619-537-2525

**ASIA/PACIFIC**  
 tel +852-2953-1000  
 fax +852-2953-1333

**EUROPE**  
 tel +44-1727-824 875  
 fax +44-1727-824 898