

## Excellent Integrated System Limited

Stocking Distributor

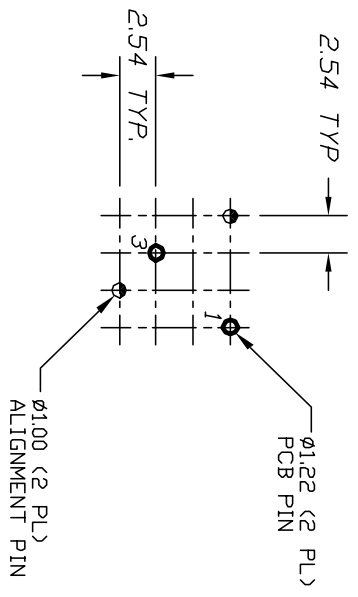
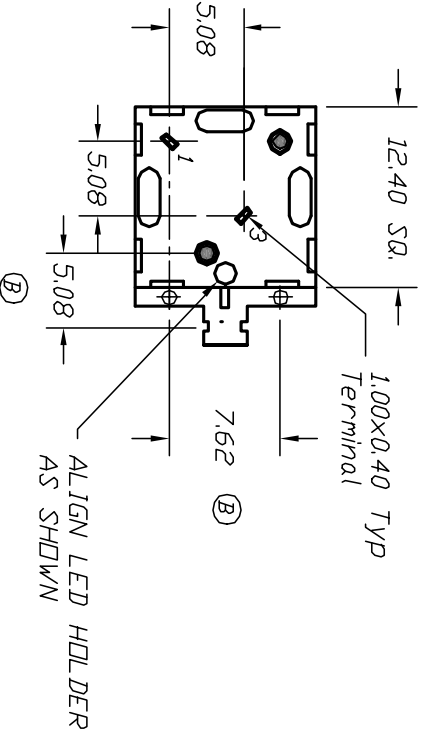
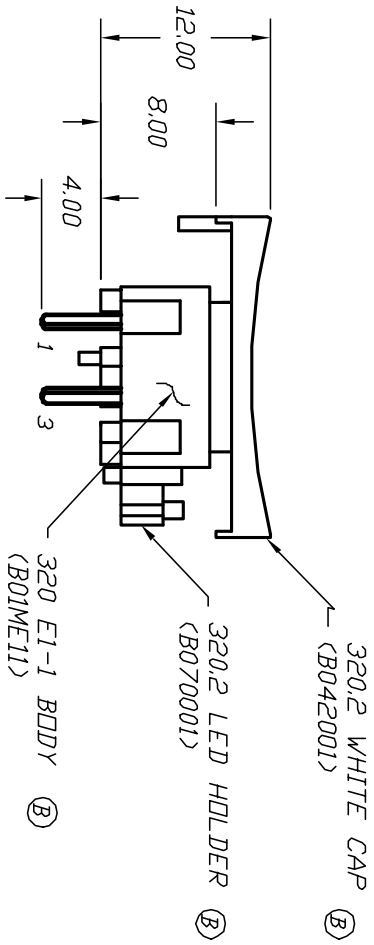
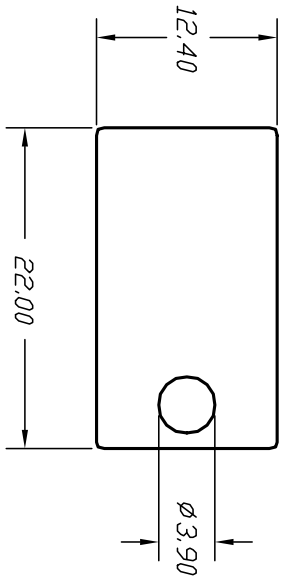
Click to view price, real time Inventory, Delivery & Lifecycle Information:

[E-Switch](#)  
[320.2E11WHT](#)

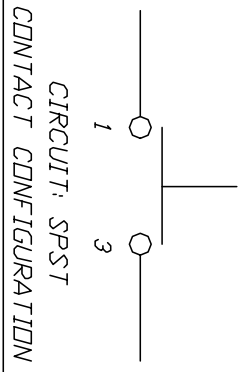
For any questions, you can email us directly:

[sales@integrated-circuit.com](mailto:sales@integrated-circuit.com)

SHEET OF



RECOMMENDED P.C.B. LAYOUT



NOTES:

1. ALL DIMENSIONS IN MM
2. GENERAL TOLERANCE: 0.0 $\pm$ 0.4
3. TERM. NOS. FOR REF. ONLY
4. CONTACT RATING: 25mA/50V DC.
5. TRAVEL: 0.7mm
6. OPERATING FORCE: 120gf.
7. USES E1-1 CONTACT DOME (B050001)

**E-SWITCH**®

B	12391	ADD COMPONENTS, DIMENSIONS	8/30/02	CB
A	10221	RELEASED FOR PRODUCTION		
REV.	ECN No.	DESCRIPTION	DATE	CHKD

TITLE		SCALE	DATE	DR	DWG	REV
320.2 E1-1 WHT, W/LED HOLDER		2:1	5/18/99	MM	XB0768P	B

THE INFORMATION CONTAINED IN THIS DOCUMENT IS PROPRIETARY TO E-SWITCH AND IS NOT TO BE COPIED OR TRANSMITTED