

Excellent Integrated System Limited

Stocking Distributor

Click to view price, real time Inventory, Delivery & Lifecycle Information:

[Panduit](#)
[HB2SP19-X](#)

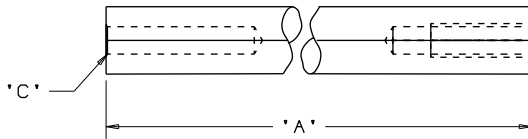
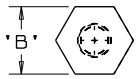
For any questions, you can email us directly:
sales@integrated-circuit.com



THIS COPY IS PROVIDED ON A RESTRICTED BASIS AND IS NOT TO BE USED IN ANY WAY DETRIMENTAL TO THE INTERESTS OF PANDUIT CORP.

NOTES:
 1. SEE CURRENT PRICE SHEET FOR PART NUMBER SUFFIX DESIGNATION FOR PACKAGE SIZE.

PANDUIT PART No.	'A'	'B'	'C' DIA
HB2SP19	2.00 (50.8)	0.50 (12.7)	0.20 (5.2)
HB2SP25	2.00 (50.8)		0.300 (7.5)



M6 X 1.0 X 3/4" DEEP TAPPED HOLE (REF)

DIMENSIONS IN BRACKETS ARE METRIC [mm]	
CAD FILENAME/LAYERS 10B015BG_DC/00A - GB0381BA_REV06	
CORP. TINLEY PARK, ILLINOIS	
HBSP HARNESS BOARD STANDOFF POST	
UNLESS OTHERWISE SPECIFIED, DIMENSIONAL TOLERANCES ARE: (.X) ±0.05 (1.3) (.XXX) ±0.010 (0.25) (.XX) ±0.02 (0.5) ANGLES ± 5°	UNLESS OTHERWISE SPECIFIED, ALL DIMENSIONS ARE GIVEN IN INCHES, THIRD ANGLE PROJECTION.
DRAWN BY KLN DATE 7/06/93 CHK'D	MAT'L: 2011-T3 ALUM. 1/2" HEX STOCK SCALE FULL DRAWING NO. GB0381BA DWG SIZE A

REV	DATE	BY	CHK	DESCRIPTION	ECN	R	CUST	SUP
6	9/27/10	BWG	JADE	CREATED NEW CAD FILE, MADE HB2SP25 DIMENSION 2.0".	GB0381BA	6	PBC	