

Excellent Integrated System Limited

Stocking Distributor

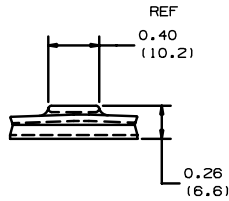
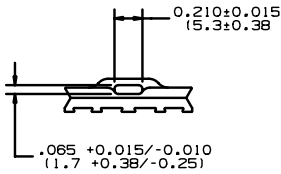
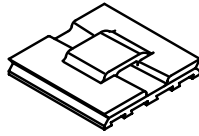
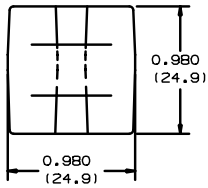
Click to view price, real time Inventory, Delivery & Lifecycle Information:

[Panduit](#)
[EMS-A-C](#)

For any questions, you can email us directly:

sales@integrated-circuit.com

THIS COPY IS PROVIDED ON A RESTRICTED BASIS AND IS NOT TO BE USED IN ANY WAY DETRIMENTAL TO THE INTERESTS OF PANDUIT CORP.



| PANDUIT PART NUMBER * | COLOR | USE WITH THESE CABLE TIE ** CROSS-SECTIONS | WEIGHT LBS/100 pcs (g) |
|-----------------------|-------------------------|--|------------------------|
| EMS-A | ⓐ NATURAL | M, I, S | 0.55 (250) |
| EMS-A-0 | WEATHER RESISTANT BLACK | M, I, S | 0.55 (250) |

NOTES:

1. DESIGNED FOR USE WITH EPOXY ADHESIVE (ADHESIVE NOT INCLUDED WITH EMS-A)
2. MOUNTING INSTRUCTIONS:
 (A) APPLY ADHESIVE TO PART,
 (B) APPLY SUFFICIENT PRESSURE TO FORCE ADHESIVE INTO GROOVES,
 (C) ALLOW ADHESIVE TO CURE BEFORE APPLYING LOAD TO MOUNT.
- *3. FOR PACKAGE SIZE SEE PART NUMBER SUFFIX DESIGNATION ON CURRENT PRICE SHEET.
- **4. CABLE TIE CROSS-SECTION CODE:
 M=MINIATURE, I=INTERMEDIATE,
 S=STANDARD.

DIMENSIONS IN PARENTHESES ARE IN METRIC.

GD FILMS/LAYERS G00239HZ_PI_EMS_01



TINLEY PARK, ILLINOIS

EMS-A
EPOXY MOUNT, STANDARD

UNLESS OTHERWISE SPECIFIED, DIMENSIONAL TOLERANCES ARE:
 (.X) ± .XX (.XXX) ± 0.02
 (.XX) ± 0.02 ANGLES ± XX

UNLESS OTHERWISE SPECIFIED, ALL DIMENSIONS ARE GIVEN IN INCHES, THIRD ANGLE PROJECTION.

DRAWN BY LGG

MAT'L: NYLON 6/6

SCALE NONE

DATE 6/22/01

DRAWING NO. G00239HZ

CHK'D

SIZE A

| REV | DATE | BY | CHK | DESCRIPTION | ECN | R | CUST | SUP |
|-----|---------|-----|-----|---|----------|---|------|-----|
| I | 6/26/03 | LGG | | CHG DIM FROM 0.210±0.015/-0.005 TO +/-0.015. CHG DIM FROM 15.3±0.38/0.13 TO +/-0.38. | G00239HZ | I | | |
| R | 6/22/01 | LGG | | CHG DIM FROM 0.065±0.015/-0.005 TO +/-0.010 CHG DIM FROM 1.7±0.38/-0.13 TO +/-0.25 | G00239HZ | R | | |
| | | | | INITIAL RELEASE REPLACED SS-4810 | G00239HZ | | | |