

Excellent Integrated System Limited

Stocking Distributor

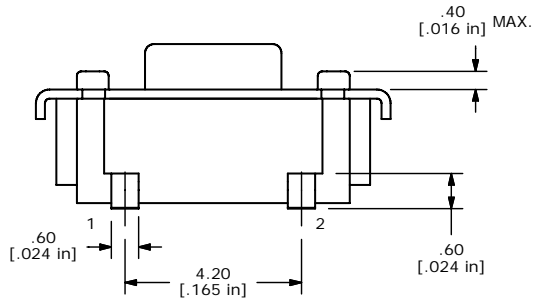
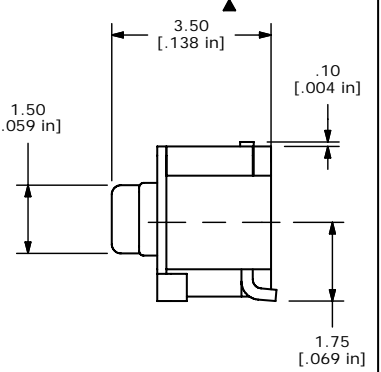
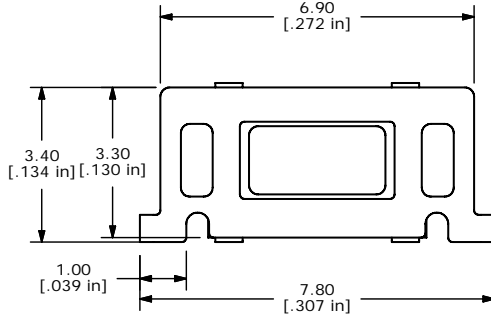
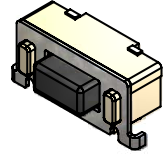
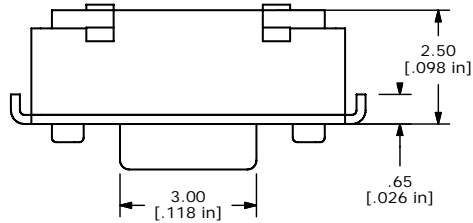
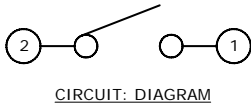
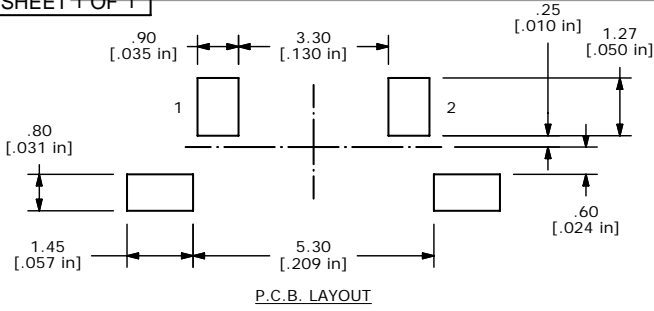
Click to view price, real time Inventory, Delivery & Lifecycle Information:

[E-Switch](#)
[TL3330AF130QG](#)

For any questions, you can email us directly:

sales@integrated-circuit.com

SHEET 1 OF 1



- NOTES:
1. ALL DIMENSIONS IN MM
 2. GENERAL TOLERANCE: X.X=±0.4
X.XX=±0.25
 3. TERM. NOS. FOR REFERENCE ONLY.
 4. RATING: 12VDC, 50mA
 - ▲ 5. OPERATING FORCE: 130±50gf
 6. TRAVEL: 0.25mm ±0.15
 7. CONTACT RESISTANCE: 100 MILLI OHMS MAX. (INITIAL)
 8. MECHANICAL/ELECTRICAL LIFE: 130g > 50,000 CYCLES
 - ▲ 9. SILVER CONTACTS
 10. PACKAGING: TAPE & REEL: 2300 PIECES PER REEL.
 11. ▲ DENOTES CRITICAL PARAMETER

E-SWITCH®

A	16309	NEW RELEASE	8/14/06	RC
REV	PCR NO	DESCRIPTION	DATE	BY

TITLE TL3330AF130QG				
SCALE 8=1	DATE 6/14/2006	DR RC	DWG P010950	REV A

THE INFORMATION CONTAINED IN THIS DOCUMENT IS PROPRIETARY TO E-SWITCH AND IS NOT TO BE COPIED OR TRANSFERRED