

## Excellent Integrated System Limited

Stocking Distributor

Click to view price, real time Inventory, Delivery & Lifecycle Information:

[Molex Connector Corporation](#)  
[0731010400](#)

For any questions, you can email us directly:

[sales@integrated-circuit.com](mailto:sales@integrated-circuit.com)

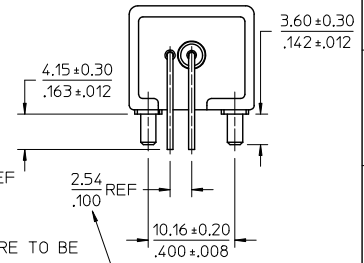
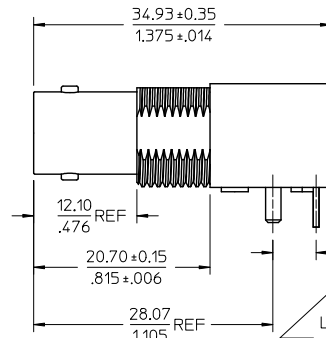
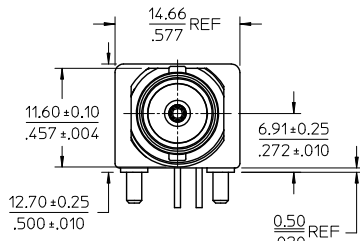
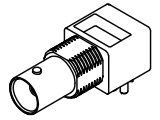
MATERIALS AND FINISHES

- BODY ZINC ALLOY  
PLATED NICKEL
- CENTER CONTACT PHOSPHOR BRONZE  
PLATED GOLD
- INSULATOR POLYPROPYLENE (94-V0)
- MOUNTING POST PHOSPHOR BRONZE  
PLATED TIN
- SOLDER TAIL COPPER OVER STEEL  
PLATED TIN
- JAM NUT BRASS  
PLATED NICKEL
- LOCK WASHER PHOSPHOR BRONZE  
PLATED NICKEL

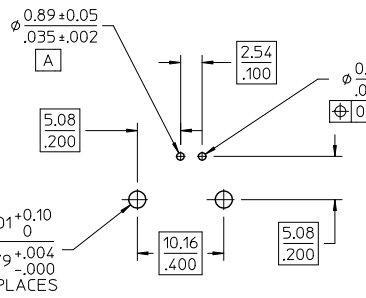
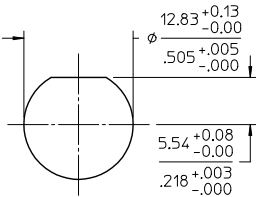
BNC JACK  
75 OHM  
INTERFACE

1/2-28 UNEF-2A

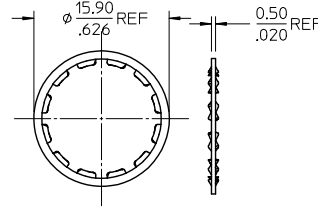
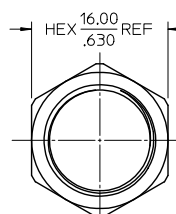
TOP VIEW



LEADS ARE TO BE ADJUSTED TO FIT PCB PATTERN



RECOMMENDED PCB HOLE CONFIGURATION



PS-89675-1030	PRODUCT SPECIFICATION
SPECIFICATION	DESCRIPTION

73171-4340	QTY (1) OF 73101-0400 IN SINGLE BAG WITH LABEL
73101-0401	WITH JAM NUT AND WASHER; PACKAGING BY TRAY
73101-0400	WITHOUT JAM NUT AND WASHER; PACKAGING BY TRAY
PART NO.	DESCRIPTION

CHG: PCB LAYOUT P.L.R: RP15-E391 EC NO: URF-2016-0379 DRW INCL: ME102 CHKD: APPR: Y.CHENG 2015/11/23 2015/11/23 DESCRIPTION REV: A5	QUALITY SYMBOLS	GENERAL TOLERANCES (UNLESS SPECIFIED)	DIMENSION STYLE	SCALE	DESIGN UNITS	THIRD ANGLE PROJECTION	
	∇=0 ∇=0 ∇=0	4 PLACES ± --- ± --- 3 PLACES ± --- ± --- 2 PLACES ± --- ± --- 1 PLACE ± --- ± --- 0 PLACE ± --- ± ---	mm INCH DRAWN BY: MICHAEL DATE: 2007/06/07 CHECKED BY: KERRIE DATE: 2007/06/07 APPROVED BY: MISEN DATE: 2007/06/07	MM/IN	METRIC	BNC JACK,R/A PCB,75 OHMS DIE CAST, RECEPTACLE BNC-J/RA/PCB	MOLEX SD-73101-040 SHEET NO. 1 OF 1
	ANGULAR ± --- ° DRAFT WHERE APPLICABLE MUST REMAIN WITHIN DIMENSIONS	SEE TABLE SIZE C	MATERIAL NO.	DOCUMENT NO.			
	THIS DRAWING CONTAINS INFORMATION THAT IS PROPRIETARY TO MOLEX INCORPORATED AND SHOULD NOT BE USED WITHOUT WRITTEN PERMISSION						