

Excellent Integrated System Limited

Stocking Distributor

Click to view price, real time Inventory, Delivery & Lifecycle Information:

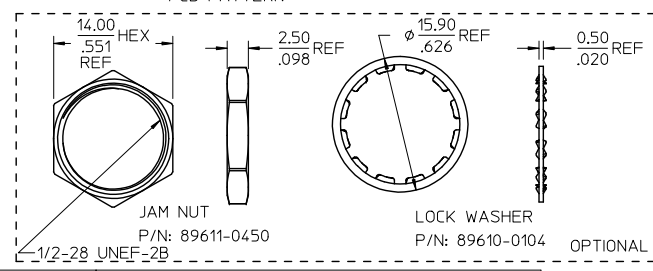
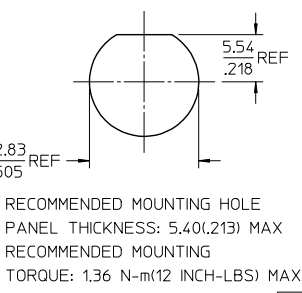
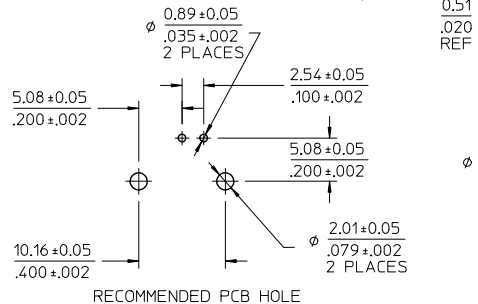
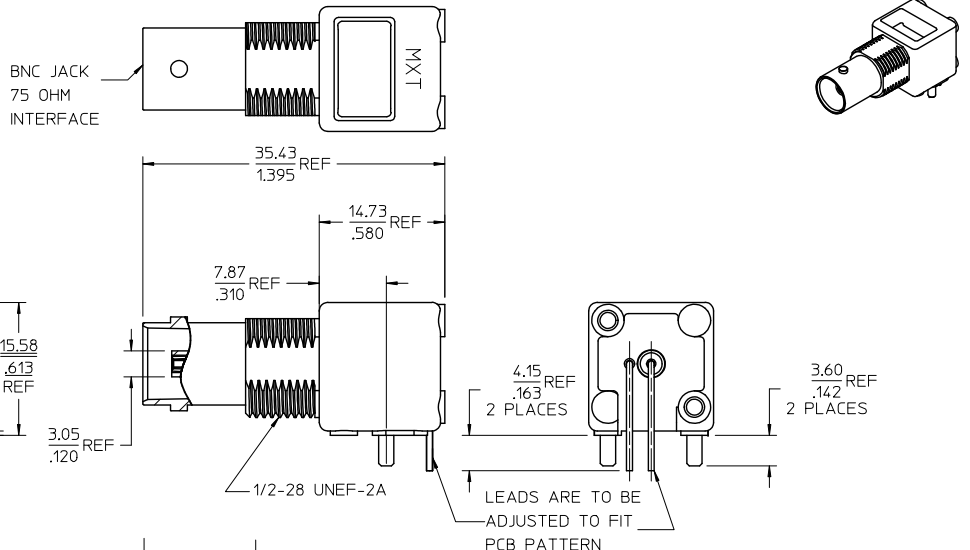
[Molex Connector Corporation](#)
[0731000080](#)

For any questions, you can email us directly:

sales@integrated-circuit.com

MATERIALS AND FINISHES

- BODY ZINC ALLOY
PLATED NICKEL
- CENTER CONTACT PHOSPHOR BRONZE
PLATED GOLD
- INSULATOR POLYPROPYLENE
- MOUNTING POST BRASS
PLATED TIN
- SOLDER TAIL STEEL
PLATED TIN
- WASHER PHOSPHOR BRONZE
PLATED NICKEL
- JAM NUT BRASS
PLATED NICKEL



RECOMMENDED MOUNTING HOLE
PANEL THICKNESS: 5.40(.213) MAX
RECOMMENDED MOUNTING TORQUE: 1.36 N-m(12 INCH-LBS) MAX

PS-73598-0051	PRODUCT SPECIFICATION
SPECIFICATION	DESCRIPTION

73171-3021	TRAY PACK, WITHOUT JAM NUT AND LOCK WASHER
73171-3020	73100-0080, ONE PER BAG
73100-0080	TRAY PACK, WITH JAM NUT AND LOCK WASHER
PART NO.	PACKAGING/ DESCRIPTION

CHG: ADDED P/N FOR NUT & WASHER PER RF14-E066 EC NO: URF2014-0353 2013/12/09 DRAWING: 02 CHKD: APPROV: JWG B4 REV	QUALITY SYMBOLS	GENERAL TOLERANCES (UNLESS SPECIFIED)	DIMENSION STYLE	SCALE	DESIGN UNITS	THIRD ANGLE PROJECTION
	▽=0 ▽=0	mm INCH 4 PLACES ± --- ± --- 3 PLACES ± --- ± --- 2 PLACES ± --- ± --- 1 PLACE ± --- ± --- ANGULAR ± 2 °	MM/IN	DRAWN BY DATE DENG 1993/02/04	METRIC	TITLE BNC JACK, R/A RECEPTACLE, 75 OHMS BNC-J/RA/PCB
				CHECKED BY DATE		MOLEX INCORPORATED SD-73100-0080
				APPROVED BY DATE KHW 1993/02/11		SHEET NO. 1 OF 1
DRAFT WHERE APPLICABLE MUST REMAIN WITHIN DIMENSIONS		SEE TABLE		THIS DRAWING CONTAINS INFORMATION THAT IS PROPRIETARY TO MOLEX INCORPORATED AND SHOULD NOT BE USED WITHOUT WRITTEN PERMISSION		