

Excellent Integrated System Limited

Stocking Distributor

Click to view price, real time Inventory, Delivery & Lifecycle Information:

[Molex Connector Corporation](#)
[0731000105](#)

For any questions, you can email us directly:

sales@integrated-circuit.com

MATERIALS AND FINISHES

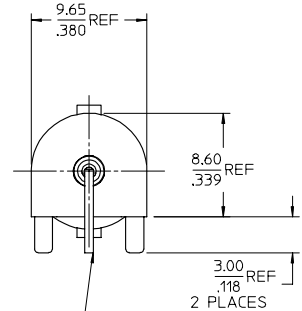
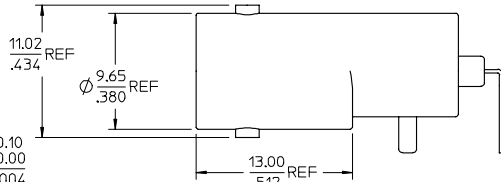
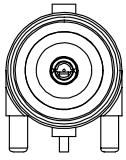
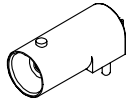
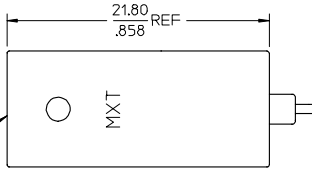
BODY ZINC ALLOY
PLATED NICKEL

CENTER CONTACT PHOSPHOR BRONZE
PLATED GOLD/TIN

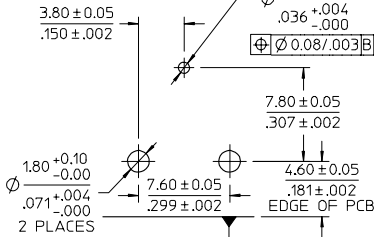
INSULATOR POLYPROPYLENE

BNC JACK
INTERFACE

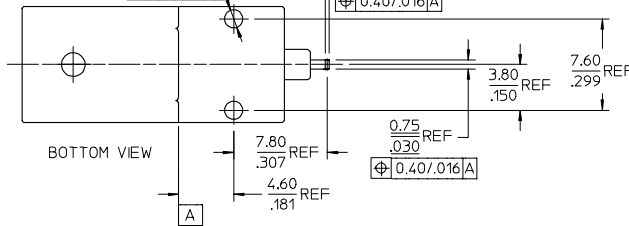
TOP VIEW



THIS LEAD IS FORMED TO FIT
RECOMMENDED PCB PATTERN
DURING INSTALLATION



RECOMMENDED PCB PATTERN



BOTTOM VIEW

PS-73598-0050	PRODUCT SPECIFICATION
SPECIFICATION	DESCRIPTION

73171-3150	73100-0105, ONE PER BAG
73100-0105	BULK
PART NO.	PACKAGING

CHG: REDREW IN SD	QUALITY SYMBOLS
ADDED IN	▽=0
73100-0105	▽=0
ELC NO: URF2007-0396	DESCRIPTION
DRW: TELAHERTY 2007/05/11	
CHK: KOS SHAH 2007/05/11	
APPR: JMWENER 2007/05/11	
REV	

GENERAL TOLERANCES (UNLESS SPECIFIED)	DIMENSION STYLE	SCALE	DESIGN UNITS	THIRD ANGLE PROJECTION
4 PLACES ± .15	MM/IN		METRIC	
3 PLACES ± .10				
2 PLACES ± .05				
1 PLACE ± .02				
ANGULAR ± 2°				
DRAFT WHERE APPLICABLE MUST REMAIN WITHIN DIMENSIONS				
	DRAWN BY	DATE	TITLE	
	THOMPSON TSA	1994/09/15	BNC JACK, R/A, RECEPTACLE	
	CHECKED BY	DATE	50 OHMS	
	A CHANG	1994/09/15	BNC-J/RA/PCB	
	APPROVED BY	DATE		
	A CHANG	1994/09/15		
	MATERIAL NO.	DOCUMENT NO.		
	SEE TABLE	SD-73100-0105		
				SHEET NO. 1 OF 1