

## Excellent Integrated System Limited

Stocking Distributor

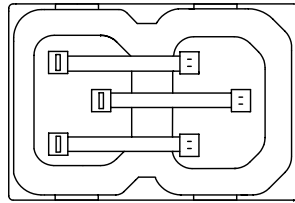
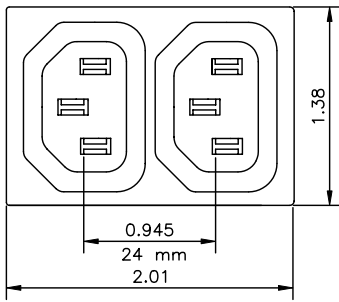
Click to view price, real time Inventory, Delivery & Lifecycle Information:

[Qualtek Electronics Corp.](#)  
[742W-15/03](#)

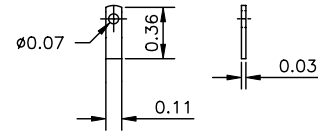
For any questions, you can email us directly:

[sales@integrated-circuit.com](mailto:sales@integrated-circuit.com)

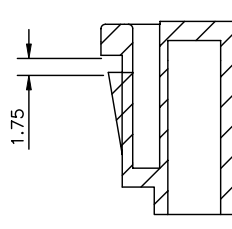
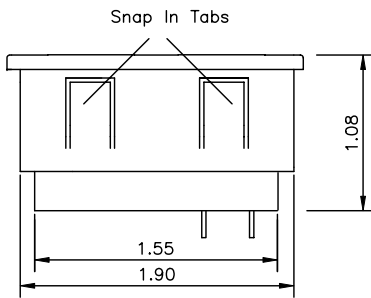
		Revision	
Rev.	Description	Date	Approved



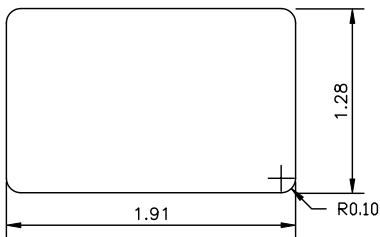
BOTTOM VIEW



Solder Tab Type 1



Rating: 10A/15A 250V AC  
APPROVAL: VDE, SEV, DEMKO, NEMKO, SEMKO  
FIMKO, UL, CSA



PANEL CUT-OUT

Dim range (mm)	Tolerance +/- (mm)	Qualtek Electronics Corp. PPC DIVISION		
		Part Number: 742W-15/03		
0-1	0.15	Description: 2 POSITION OUTLET		
1-6	0.20			
6-18	0.30			
18-50	0.50			
50-120	0.70	Drawn/Date	Checked/Date	Approved/Date
120-250	0.90	B.ZHANG 01-22-03	01-22-03	JJH/01-22-03
250-500	1.20			