



Distributor of NDK: Excellent Integrated System Limited

Datasheet of NX4025DA-16.000000MHZ-B5 - Crystal 16.0000MHz 10ppm 7.2pF 60 Ohm
-30°C - 85°C Surface Mount 4-SMD, No Lead (DFN, LCC)

Contact us: sales@integrated-circuit.com Website: www.integrated-circuit.com

Excellent Integrated System Limited

Stocking Distributor

Click to view price, real time Inventory, Delivery & Lifecycle Information:

[NDK](#)

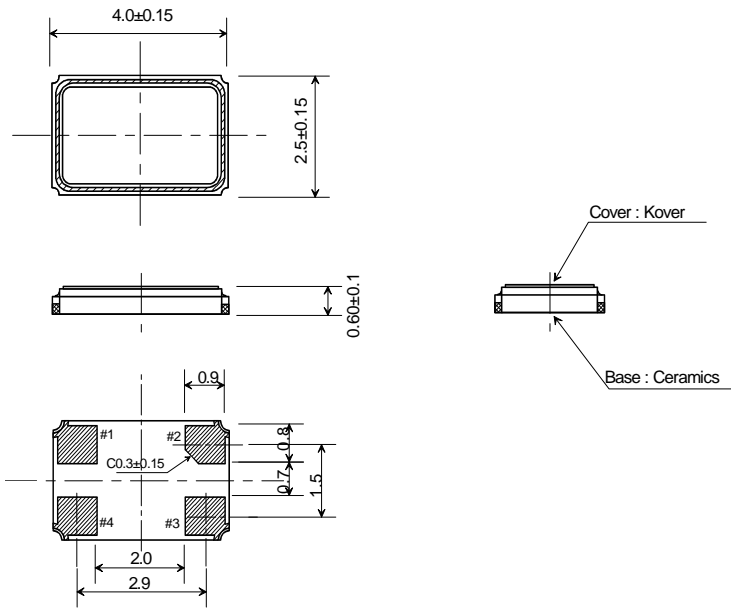
[NX4025DA-16.000000MHZ-B5](#)

For any questions, you can email us directly:

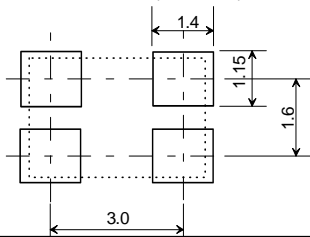
sales@integrated-circuit.com

Specification of Crystal Unit

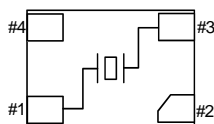
1	NDK PART NUMBER	NX4025DA-16.000000MHZ-B5
2	CHIPSET MAKER	CAMBRIDGE SILICON RADIO
3	APPLICATION	BLUETOOTH
4	CHIPSET NAME	VIPER
5	Type	NX4025DA
6	Electrical characteristics	
6.1	Nominal frequency(F0)	16.000MHz
6.2	Overtone order	Fundamental
6.3	Adjustment tolerance	$\pm 10 \times 10^{-6}$ max. (+25 °C)
6.4	Tolerance over the temperature range	$\pm 15 \times 10^{-6}$ max. (-30~+85 °C) The reference temperature shall be +25 °C.
6.5	Equivalent resistance (R1)	60Ω max. (-40~+85 °C)
6.6	Shunt Capacitance (C0)	1.04pF +/-15%
6.7	Motional Capacitance (C1)	3.97fF +/-15%
7	Measurement circuit	
7.2	Frequency measurement	
7.1.1	Measuring instrument	π circuit
7.1.2	Load capacitance(CL)	7.2pF
7.1.3	Level of drive	10μW
7.2	Equivalent resistance measurement	
7.2.1	Measuring instrument	π circuit
7.2.2	Load capacitance(CL)	Series
7.2.3	Level of drive	10μW
8	Dimension	



LAND PATTERN (TYPICAL)



TOP VIEW PIN CONNECTION



TERMINAL
#1, #3: Crystal
#2, #4: GND(CONNECTION WITH COVER)