

Excellent Integrated System Limited

Stocking Distributor

Click to view price, real time Inventory, Delivery & Lifecycle Information:

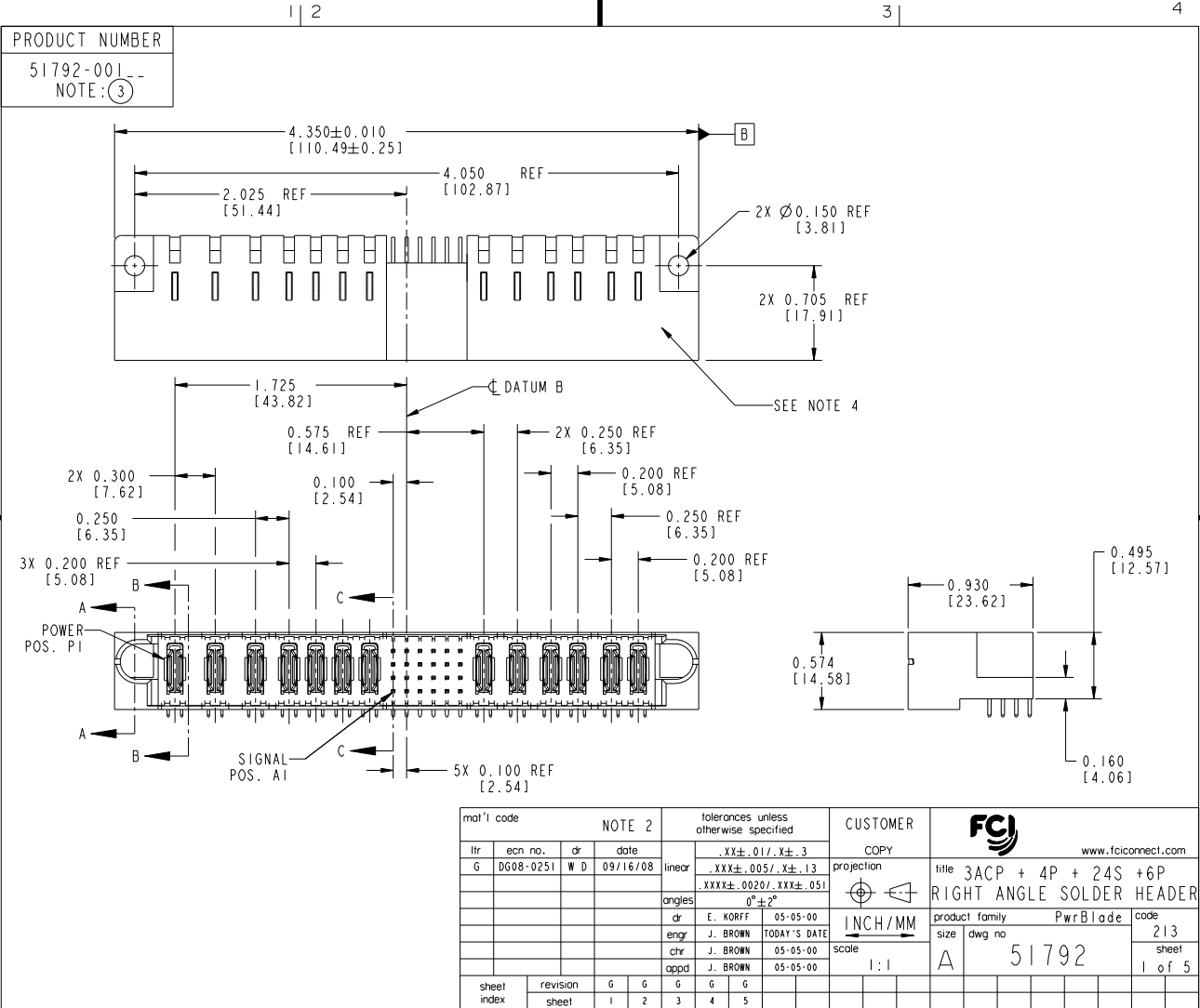
[FCI](#)
[51792-001](#)

For any questions, you can email us directly:
sales@integrated-circuit.com

Tous droits strictement réservés. Reproduction ou communication à des tiers interdite sans que la forme que ce soit sans autorisation écrite du propriétaire. Propriété de c FCI. Droits de reproduction FCI.



All rights strictly reserved. Reproduction or issue to third parties, in any form whatsoever is not permitted without written authority from the proprietor. Property of FCI. Copyright FCI.



NOTE 2				tolerances unless otherwise specified		CUSTOMER		FCI	
ltr	ecn no.	dr	date	linear	.XX±.01/.X±.3	COPY		www.fciconnect.com	
G	DG08-025I	W D	09/16/08	angles	.XXX±.005/.XX±.13	projection		title 3ACP + 4P + 24S + 6P	
					.XXX±.0020/.XXX±.051	INCH/MM		RIGHT ANGLE SOLDER HEADER	
				dr	0° ± 2°	scale		product family PwrBlade code 213	
				enr	E. KORFF 05-05-00	1:1		size dwg no 51792 sheet 1 of 5	
				chr	J. BROWN TODAY'S DATE				
				appd	J. BROWN 05-05-00				
sheet index	revision sheet	G G	G G	G G	G G				
		1 2	3 4	5					

1 | 2

Pro/E

PDM: Rev:G

STAT: US: Released

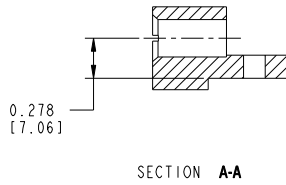
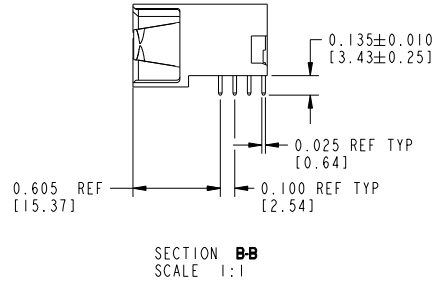
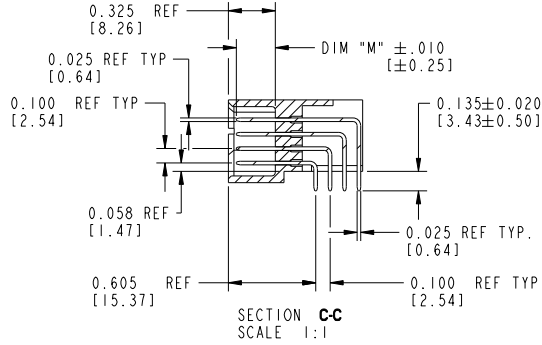
Printed: Dec 20, 2010

Tous droits strictement réservés. Reproduction ou communication à des tiers interdite sous quelque forme que ce soit sans autorisation écrite du propriétaire. Propriété de c FCI. Droits de reproduction FCI.



All rights strictly reserved. Reproduction or issue to third parties in any form whatsoever is not permitted without written authority from the proprietor. Property of FCI. Copyright FCI.

PRODUCT NUMBER
51792-001--
NOTE: (3)



mat'l code		NOTE 2		tolerances unless otherwise specified		CUSTOMER		FCI		www.fciconnect.com	
ltr	ecn no.	dr	date	linear	.XX±.01/.X±.3	projection	COPY	title 3ACP + 4P + 24S + 6P			
G				angles	.XXX±.005/.XX±.13			RIGHT ANGLE SOLDER HEADER			
				dr	.XXX±.0020/.XXX±.051			product family	PwrBlade	code	213
				enr	0°±2°	INCH/MM	size	51792	sheet	2 of 5	
				chr	E. KORFF 05-05-00	scale	A				
				appd	J. BROWN TODAY'S DATE	1:1					
					J. BROWN 05-05-00						
sheet index	revision sheet										

1 | 2

Pro/E

PDM: Rev:G

STAT: US: Released

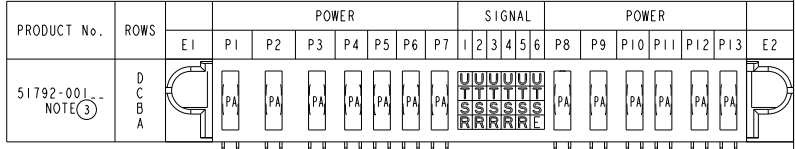
code code 22526 4 Printed: Dec 20, 2010

Tous droits strictement réservés. Reproduction ou communication à des tiers interdite sous quelque forme que ce soit sans autorisation écrite du propriétaire. Propriété de c FCI. Droits de reproduction FCI.



All rights strictly reserved. Reproduction or issue to third parties in any form whatsoever is not permitted without written authority from the proprietor. Property of FCI. Copyright FCI.

PRODUCT NUMBER 51792-001-- NOTE: (3)	CODE	DIM "M" MATING LENGTH	CONTACT TYPE
	PA	N/A [N/A]	POWER
	R	0.270 [6.86]	SIGNAL
	S	0.270 [6.86]	SIGNAL
	T	0.270 [6.86]	SIGNAL
	U	0.270 [6.86]	SIGNAL
	E	0.220 [5.59]	SIGNAL



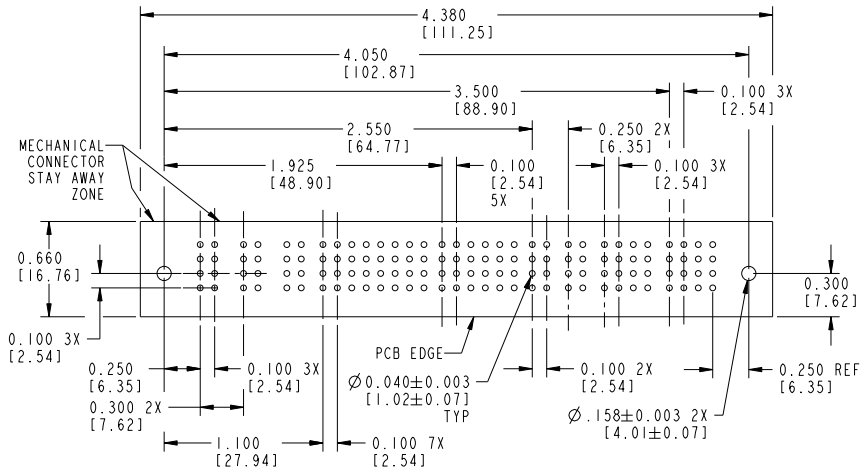
mat'l code				NOTE 2				tolerances unless otherwise specified				CUSTOMER				FCI						
ltr	ech no.	dr	date	linear	.XX±.01/.X±.3	projection	COPY				www.fciconnect.com											
G				linear	.XXX±.005/.XX±.13		title 3ACP + 4P + 24S + 6P				RIGHT ANGLE SOLDER HEADER											
				angles	.XXX±.0020/.XXX±.051		product family PwrBlade				code 213											
				dr	E. KORFF 05-05-00	INCH/MM	size				sheet 3 of 5											
				enr	J. BROWN TODAY'S DATE	scale	A				51792											
				chr	J. BROWN 05-05-00	1:1																
				appd	J. BROWN 05-05-00																	
sheet index	revision sheet																					

Tous droits strictement réservés. Reproduction ou communication à des tiers interdite sans que la forme que ce soit sans autorisation écrite du propriétaire. Propriété de c FCI. Droits de reproduction FCI.



All rights strictly reserved. Reproduction or issue to third parties in any form whatsoever is not permitted without written authority from the proprietor. Property of FCI. Copyright FCI.

PRODUCT NUMBER
51792-001--
NOTE: ③



RECOMMENDED PCB LAYOUT

mat'l code		NOTE 2		tolerances unless otherwise specified		CUSTOMER		FCI	
litr	ech no.	dr	date	linear	.XX±.01/0.X±0.3	projection	COPY	www.fciconnect.com	
G				angles	.XXX±.005/0.XX±0.13	INCH/MM		title 3ACP + 4P + 24S + 6P	
				dr	.XXX±.002/0.XXX±.051	scale		RIGHT ANGLE SOLDER HEADER	
				enr	0°±2°	1:1		product family PwrBlade	
				chr	J. BROWN TODAY'S DATE			code 213	
				appd	J. BROWN 05-05-00			size dwg no 51792	
sheet index	revision sheet							sheet 4 of 5	

1 | 2

Pro/E

PDM: Rev:G

STATUS: Released

Printed: Dec 20, 2010

Tous droits strictement réservés. Reproduction ou communication à des tiers interdite sous quelque forme que ce soit sans autorisation écrite du propriétaire. Propriété de c FCI. Droits de reproduction FCI.



All rights strictly reserved. Reproduction or issue to third parties in any form whatsoever is not permitted without written authority from the proprietor. Property of FCI. Copyright FCI.

PRODUCT NUMBER
51792-001--
NOTE: ③

NOTES:

- DIMENSIONS AND TOLERANCES ARE IN ACCORDANCE WITH ASME Y14.5M, 1994 UNLESS OTHERWISE SPECIFIED.

CONNECTOR NOTES:

- HOUSING MATERIAL: UL 94 V-0 GLASS FILLED HIGH-TEMP THERMOPLASTIC
POWER CONTACT MATERIAL: COPPER ALLOY
SIGNAL PIN MATERIAL: COPPER ALLOY

③ 3. SEE ITEM 1 & 2 IN PRINT 10064183 FOR PLATING SPEC OF 51792-001 AND 51792-001LF RESPECTIVELY.

- MANUFACTURER'S NAME, P/N, AND DATE CODE TO APPEAR ON THIS SURFACE.
- PRODUCT SPECIFICATION GS-12-149.
APPLICATION SPECIFICATION BUS-20-067.

PCB NOTES:

- ALL HOLE DIAMETERS ARE FINISHED HOLE SIZE.
- MOUNTING HOLES, WHERE APPLICABLE, ARE UNPLATED.
- $\varnothing .0453 \pm 0.0010$ [1.151 ± 0.025] DRILLED HOLES PLATED WITH $.0003$ [0.008] MIN SnPb OVER $.001$ [0.03] TO $.003$ [0.08] Cu PLATING TO ACHIEVE $\varnothing .040 \pm .003$ [$1.02 \pm .07$] HOLE.
- "DIM XXX" TO BE DETERMINED BY THE CUSTOMER.
- CONNECTOR KEEP-OUT ZONE.
- A ③ SYMBOL WILL BE NEXT TO ANY DIMENSION, VIEW, OR NOTE WHICH HAS BEEN MODIFIED WITH THE CURRENT DRAWING REVISION.

mat'l code		NOTE 2		tolerances unless otherwise specified		CUSTOMER		FCI	
ltr	ech no.	dr	date	linear	angles	projection	scale	product family	code
G				.XX±.01/0.X±0.3		COPY	1:1	PwrBlade	213
				.XXX±.005/0.XX±0.13		INCH/MM			5 of 5
				.XXXX±.0020/0.XXX±.051					
				0°±Z°					
		dr	E. KORFF	05-05-00					
		enr	J. BROWN	TODAY'S DATE					
		chr	J. BROWN	05-05-00					
		appd	J. BROWN	05-05-00					
sheet index	revision sheet								

1 | 2

Pro/E

PDM: Rev: G

STATUS: Released

Printed: Dec 20, 2010

B

B