

Excellent Integrated System Limited

Stocking Distributor

Click to view price, real time Inventory, Delivery & Lifecycle Information:

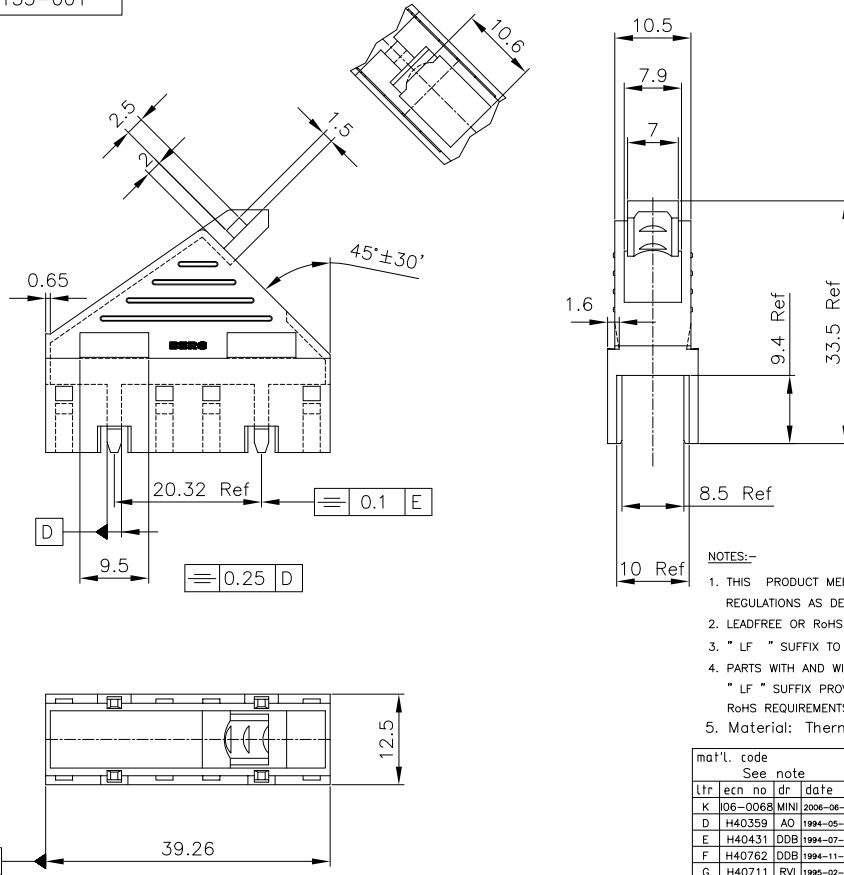
[FCI](#)

[65135-001LF](#)

For any questions, you can email us directly:

sales@integrated-circuit.com

Product number
65135-001



NOTES:-

1. THIS PRODUCT MEETS EUROPEAN UNION DIRECTIVES AND OTHER COUNTRY REGULATIONS AS DESCRIBED IN GS-22-008.
2. LEADFREE OR RoHS DIRECTIVE LABELLING TO BE PROVIDED AS PER GS-14-920.
3. " LF " SUFFIX TO PRODUCT NUMBER FOR RoHS COMPATIBLE/ LEADFREE VERSION.
4. PARTS WITH AND WITHOUT "LF " SUFFIX ARE FORM-FIT AND FUNCTIONALLY IDENTICAL. " LF " SUFFIX PROVIDED FOR PART NUMBER STANDARDISATION OF PART THAT MEETS RoHS REQUIREMENTS.
5. Material: Thermoplastic polyester, 30% Glassfilled .Colour: Black; UL-94-V0

mat'l. code	See note	surface	tolerance	projection	product family
ltr	ecn no	dr	date	ISO 1302	ISO 101
K	06-0068	MINI	2006-06-01	ISO 406	ISO 101
D	H40359	AD	1994-05-30	tolerances unless otherwise specified	angles
E	H40431	DDB	1994-07-05	linear	mm
F	H40762	DDB	1994-11-28	scale	-
G	H40711	RVI	1995-02-06	Oppers.A	1994-05-30
H	05-0042	MINI	2005-03-17	chr	Rakhee George
J	05-0248	MINI	2005-11-22	chr	Rakhee George
sheet index	revision	K			
sheet	1				