

## Excellent Integrated System Limited

Stocking Distributor

Click to view price, real time Inventory, Delivery & Lifecycle Information:

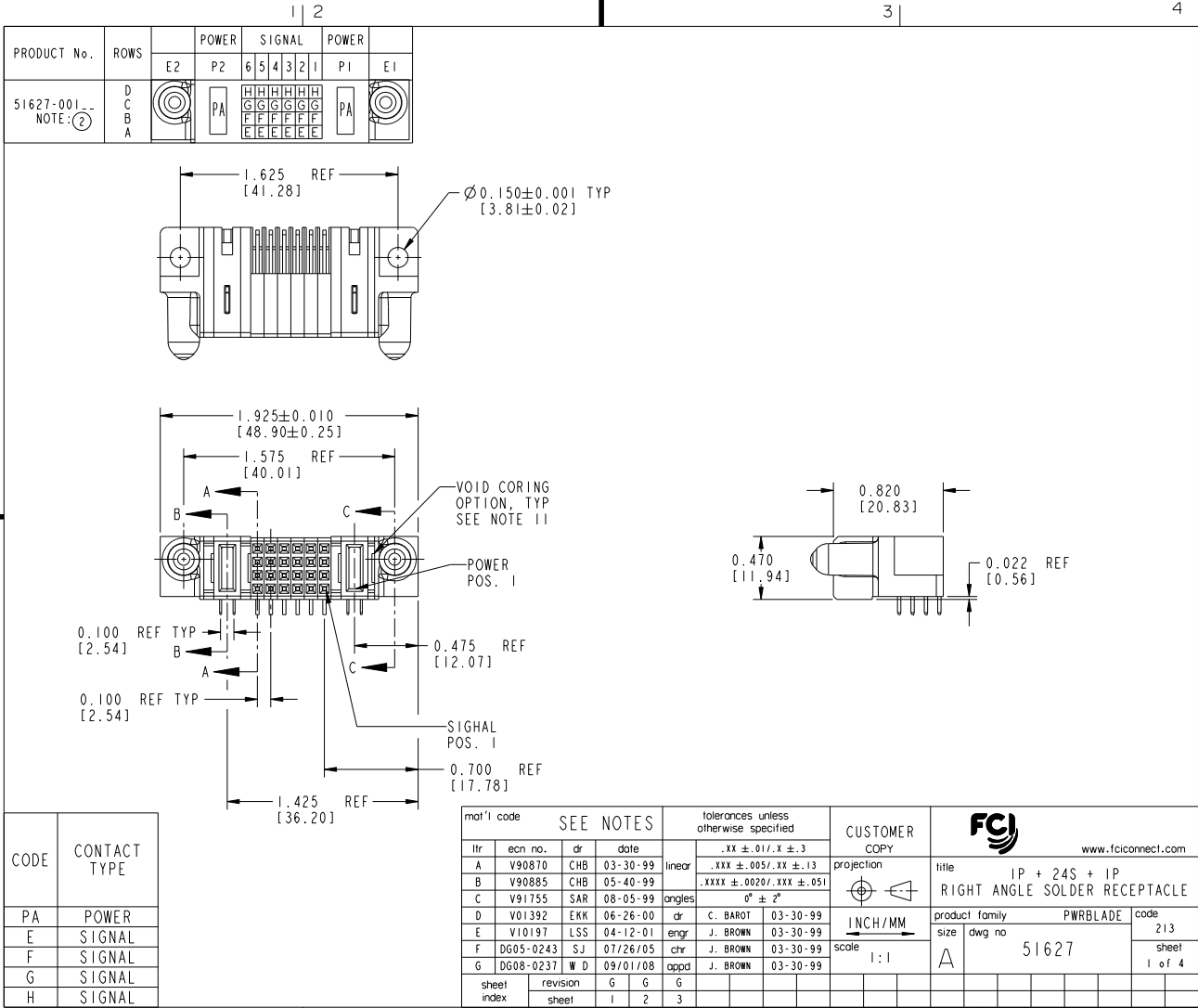
[FCI](#)  
[51627-001](#)

For any questions, you can email us directly:  
[sales@integrated-circuit.com](mailto:sales@integrated-circuit.com)

Tous droits strictement réservés. Reproduction ou communication à des tiers interdite sous quelque forme que ce soit sans autorisation écrite du propriétaire. Propriété de c FCI. Droits de reproduction FCI.



All rights strictly reserved. Reproduction or issue to third parties in any form whatsoever is not permitted without written authority from the proprietor. Property of FCI. Copyright FCI.



CODE	CONTACT TYPE
PA	POWER
E	SIGNAL
F	SIGNAL
G	SIGNAL
H	SIGNAL

mat'l code				SEE NOTES		tolerances unless otherwise specified		CUSTOMER COPY		FCI	
ltr	ecn no.	dr	date	linear	.XX ± 0.1 / .X ± .3	projection	www.fciconnect.com		title		
A	V90870	CHB	03-30-99		.XXX ± .005 / .XX ± .13		IP + 24S + IP		RIGHT ANGLE SOLDER RECEPTACLE		
B	V90885	CHB	05-40-99	angles	.XXXX ± .0020 / .XXX ± .051		product family		PWRBLADE		
C	V91755	SAR	08-05-99		0° ± 2°		size		dwg no		
D	V01392	EKK	06-26-00	dr	c. BAROT 03-30-99		product family		code		
E	V10197	LSS	04-12-01	engr	J. BROWN 03-30-99		size		213		
F	DG05-0243	SJ	07/26/05	chr	J. BROWN 03-30-99		product family		code		
G	DG08-0237	WD	09/01/08	appd	J. BROWN 03-30-99		size		51627		
sheet index	revision sheet	G	G	G			scale		1 of 4		
1	2	3					1:1		A		

Pro/E

PDM: Rev:G

STATUS: Released

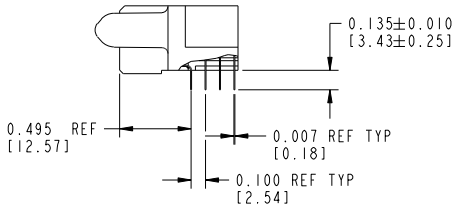
Printed: Dec 20, 2010

Tous droits strictement réservés. Reproduction ou communication à des tiers interdite sous quelque forme que ce soit sans autorisation écrite du propriétaire. Propriété de c FCI. Droits de reproduction FCI.

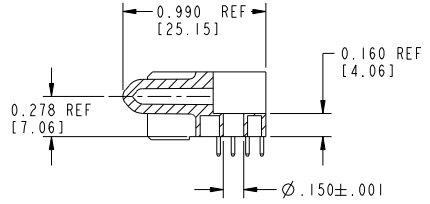


All rights strictly reserved. Reproduction or issue to third parties in any form whatsoever is not permitted without written authority from the proprietor. Property of FCI. Copyright FCI.

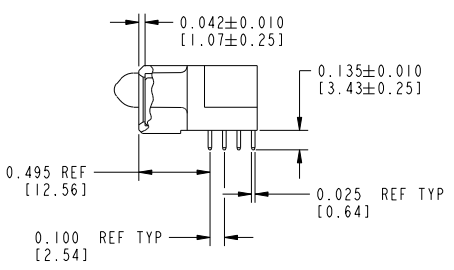
PRODUCT NUMBER  
51627-001--  
NOTE: ②



SECTION A-A



SECTION C-C



SECTION B-B

mat'l code		SEE NOTES		tolerances unless otherwise specified		CUSTOMER COPY		FCI		www.fciconnect.com	
ltr	ecn no.	dr	date	linear	.XX ± .01 / .X ± .3	projection		title			
G				angles	.XXX ± .005 / .XX ± .13			IP + 24S + 1P RIGHT ANGLE SOLDER RECEPTACLE			
				dr	.XXXX ± .0020 / .XXX ± .051	INCH/MM	product family	PWRBLADE		code	
				enr	0° ± 2°	scale	size	dwg no		213	
				chr		1:1	51627		sheet		
				appd					2 of 4		
sheet index		revision sheet									

1 | 2

3 |

4

Pro/E

PDM: Rev:G

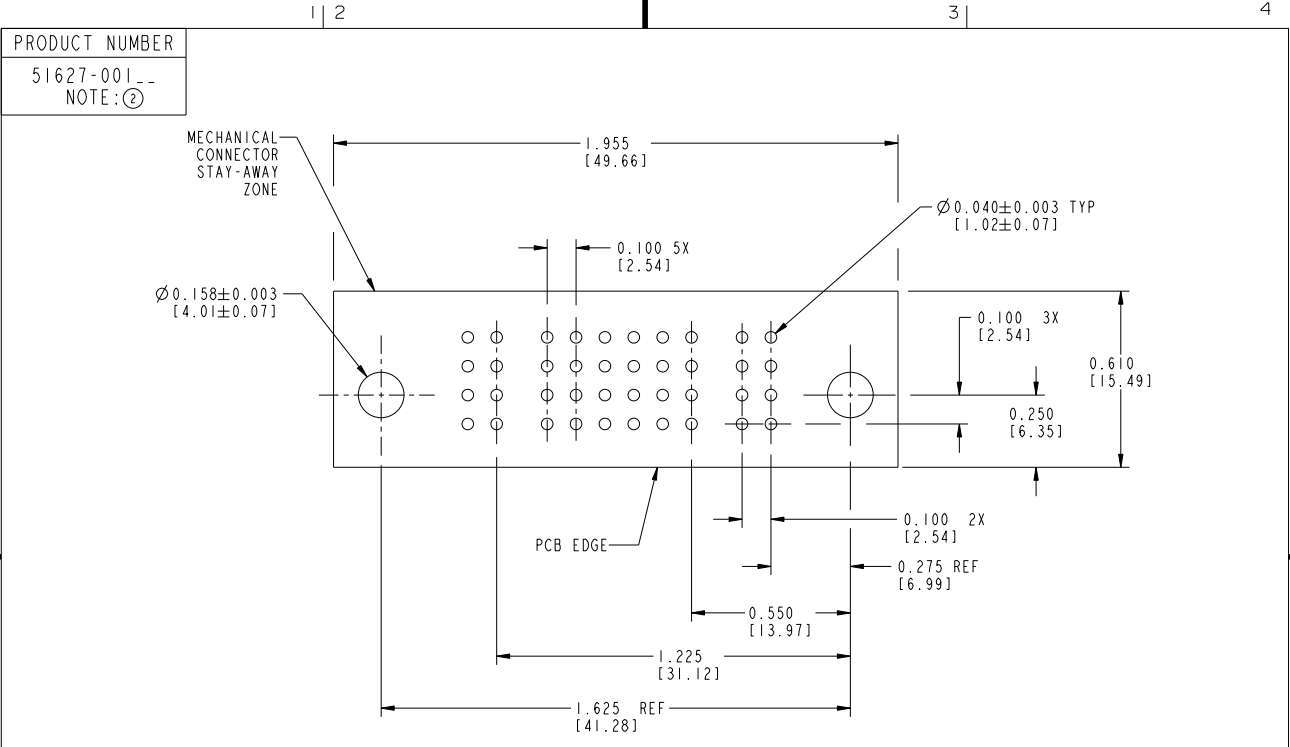
STATUS: Released

Printed: Dec 20, 2010

Tous droits strictement réservés. Reproduction ou communication à des tiers interdite sans quelque forme que ce soit sans autorisation écrite du propriétaire. Propriété de c FCI. Droits de reproduction FCI.



All rights strictly reserved. Reproduction or issue to third parties in any form whatsoever is not permitted without written authority from the proprietor. Property of FCI. Copyright FCI.



RECOMMENDED PCB LAYOUT

mat'l code		SEE NOTES		tolerances unless otherwise specified		CUSTOMER COPY		FCI www.fciconnect.com	
ltr	ecn no.	dr	date	linear	XX ± .01 / X ± .3	projection		title	
G				angles	XXX ± .005 / XX ± .13	INCH/MM		IP + 24S + 1P RIGHT ANGLE SOLDER RECEPTACLE	
				dr	XXXX ± .0020 / XXX ± .051	scale	product family	PWRBLADE	code
				enr	0° ± 2°	2:1	size	dwg no	213
				chr			51627	sheet	3 of 4
				appd					
sheet index	revision sheet								

Pro/E

PDM: Rev:G

STATUS: Released

Printed: Dec 20, 2010

Tous droits strictement réservés. Reproduction ou communication à des tiers interdite sans quelque forme que ce soit sans autorisation écrite du propriétaire. Propriété de c FCI. Droits de reproduction FCI.



All rights strictly reserved. Reproduction or issue to third parties in any form whatsoever is not permitted without written authority from the proprietor. Property of FCI. Copyright FCI.

1 | 2

3 |

4

PRODUCT NUMBER  
51627-001--  
NOTE: ②

CONNECTOR NOTES:

- ① HOUSING MATERIAL: UL 94 V-0 GLASS FILLED HIGH TEMP THERMOPLASTIC  
POWER CONTACT MATERIAL: COPPER ALLOY  
SIGNAL CONTACT MATERIAL: COPPER ALLOY
- ② PLATING:  
51627-001, 51627-001LF PLATING SPEC. WAS SHOWN IN THE PRINT OF 10064183.

3. "MANUFACTURER" NAME, P/N, AND DATE CODE TO APPEAR ON THIS SURFACE

4. PRODUCT SPECIFICATION GS-12-149

PCB NOTES:

- 5. ALL DIMENSIONS ARE BASIC UNLESS OTHERWISE SPECIFIED.
- 6. ALL THROUGH HOLES ARE LOCATED WITH A TRUE POSITION OF 0.004 [0.10]
- 7. ALL HOLE DIAMETERS ARE FINISHED HOLE SIZE
- 8.  $\varnothing 0.158 [4.01]$  THROUGH HOLES ARE UNPLATED.
- 9.  $\varnothing 0.0453 \pm 0.0010 [1.151 \pm 0.025]$  DRILLED HOLES PLATED WITH 0.0003 [0.008] MIN SnPb OVER 0.001 [0.03] TO 0.003 [0.08] Cu PLATING TO ACHIEVE A  $\varnothing 0.040 \pm 0.003 [1.02 \pm 0.07]$  HOLE.
- 10.  $\Delta$  SYMBOL WILL BE NEXT TO ANY DIMENSION, VIEW, OR NOTE WHICH HAS BEEN MODIFIED WITH THE CURRENT DRAWING REVISION.
- 11. THE VOID CORING IN BETWEEN POWER MODULES, SIGNAL MODULES AND END MODULES ARE OPTIONAL AND THE SHAPE MAY BE DIFFERENT FOR OPTIMIZE THE MOLDING PROCESS. THE VOID CORING WILL NOT EFFECT TO PRODUCT FUNCTION.

mat'l code		SEE NOTES		tolerances unless otherwise specified		CUSTOMER		FCI		www.fciconnect.com	
ltr	ecn no.	dr	date	linear	XX ± .01 / X ± .3	projection	COPY	title			
G					XXX ± .005 / XX ± .13			IP + 24S + 1P			
				angles	XXXX ± .0020 / XXX ± .051			RIGHT ANGLE SOLDER RECEPTACLE			
				dr	C. BAROT	INCH/MM		product family		code	
				enr	J. BROWN 04-03-99	scale	A	PwrBlade		213	
				chr	J. BROWN 03-30-99	1:1		size		sheet	
				appd	J. BROWN 03-30-99			51627		4 of 4	
sheet index	revision sheet										

1 | 2

Pro/E

PDM: Rev:G

STATUS: Released

Printed: Dec 20, 2010