

Excellent Integrated System Limited

Stocking Distributor

Click to view price, real time Inventory, Delivery & Lifecycle Information:

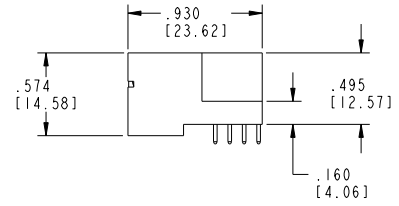
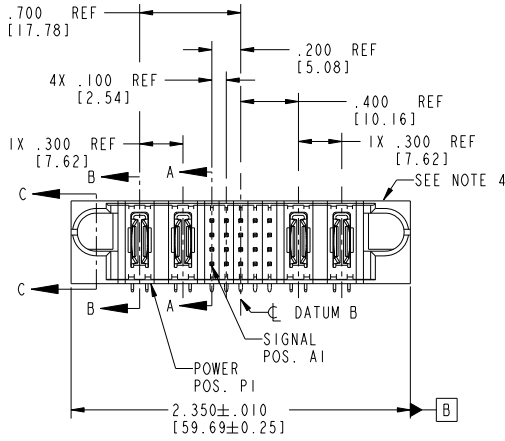
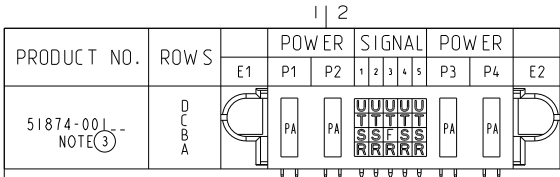
[FCI](#)
[51874-001](#)

For any questions, you can email us directly:
sales@integrated-circuit.com

Tous droits strictement réservés. Reproduction ou communication à des tiers interdite sous quelque forme que ce soit sans autorisation écrite du propriétaire. Propriété de c FCI. Droits de reproduction FCI.



All rights strictly reserved. Reproduction or issue to third parties in any form whatsoever is not permitted without written authority from the proprietor. Property of FCI. Copyright FCI.



CODE	DIM "M" MATING LENGTH	CONTACT TYPE
F	.220 [5.59]	SIGNAL
R	.270 [6.86]	SIGNAL
S	.270 [6.86]	SIGNAL
T	.270 [6.86]	SIGNAL
U	.270 [6.86]	SIGNAL
PA	N/A [N/A]	POWER

mat'l code		SEE NOTE 2		tolerances unless otherwise specified		CUSTOMER	
ltr	ecn no.	dr	date	linear	.XX±.01/0.X±0.3	COPY	www.fciconnect.com
A	V10809	EKK	10-10-00	angles	.XXX±.005/0.XX±0.13	projection	
B	V20776	JWS	05-21-02		.XXX±.0020/0.XXX±0.051	INCH/MM	title 2P + 20S + 2P
C	DG05-0064	SW	04/05/05		0°±?	scale 1:1	RIGHT ANGLE SOLDER HEADER
D	DG06-0005	JMG	01/05/06	dr	J. SHAFFER 05-21-02		product family PwrBlade
E	DG08-0272	WD	09/28/08	engr	M. MOSTOLLER 05-21-02		code 213
				chr	M. MOSTOLLER 05-21-02		sheet 1 of 4
				appd	M. MOSTOLLER 05-21-02		size dwg no 51874
sheet index	revision sheet	E 1	E 2	E 3	E 4		

1 | 2

Pro/E

PDM: Rev:E

STAT: US: Released

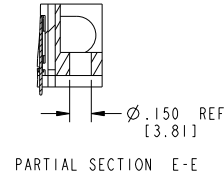
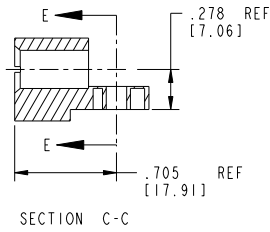
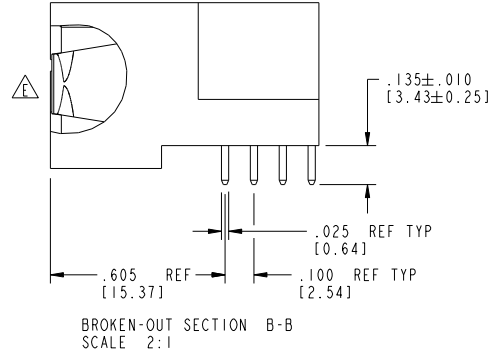
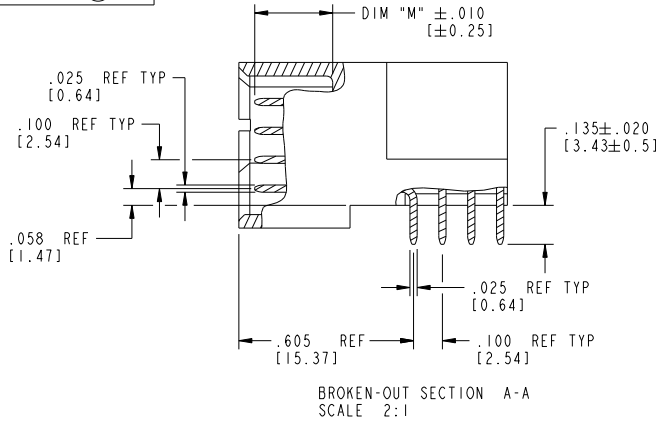
Printed: Dec 20, 2010

Tous droits strictement réservés. Reproduction ou communication à des tiers interdite sous quelque forme que ce soit sans autorisation écrite du propriétaire. Propriété de c FCI. Droits de reproduction FCI.



All rights strictly reserved. Reproduction or issue to third parties in any form whatsoever is not permitted without written authority from the proprietor. Property of FCI. Copyright FCI.

PRODUCT NUMBER
51874-001--
NOTE ③



mat'l code		SEE NOTE 2		tolerances unless otherwise specified		CUSTOMER		FCI		www.fciconnect.com		
ltr	ech no.	dr	date	linear	.XX±.01/0.X±0.3	projection	COPY	title	2P + 20S + 2P			
E				angles	.XXX±.005/0.XX±0.13			RIGHT ANGLE SOLDER HEADER				
				dr	.XXX±.0020/0.XXX±0.051			product family	PwrBlade		code	213
				engr	J. SHAFFER 05-21-02	scale	INCH/MM	size	A		sheet	2 of 4
				chr	M. MOSTOLLER 05-21-02	1:1		dwg no	51874			
				appd	M. MOSTOLLER 05-21-02							
sheet index	revision sheet											

1 | 2

Pro/E

PDM: Rev:E

STATUS: Released

Printed: Dec 20, 2010

1 | 2

3 |

4

A

A

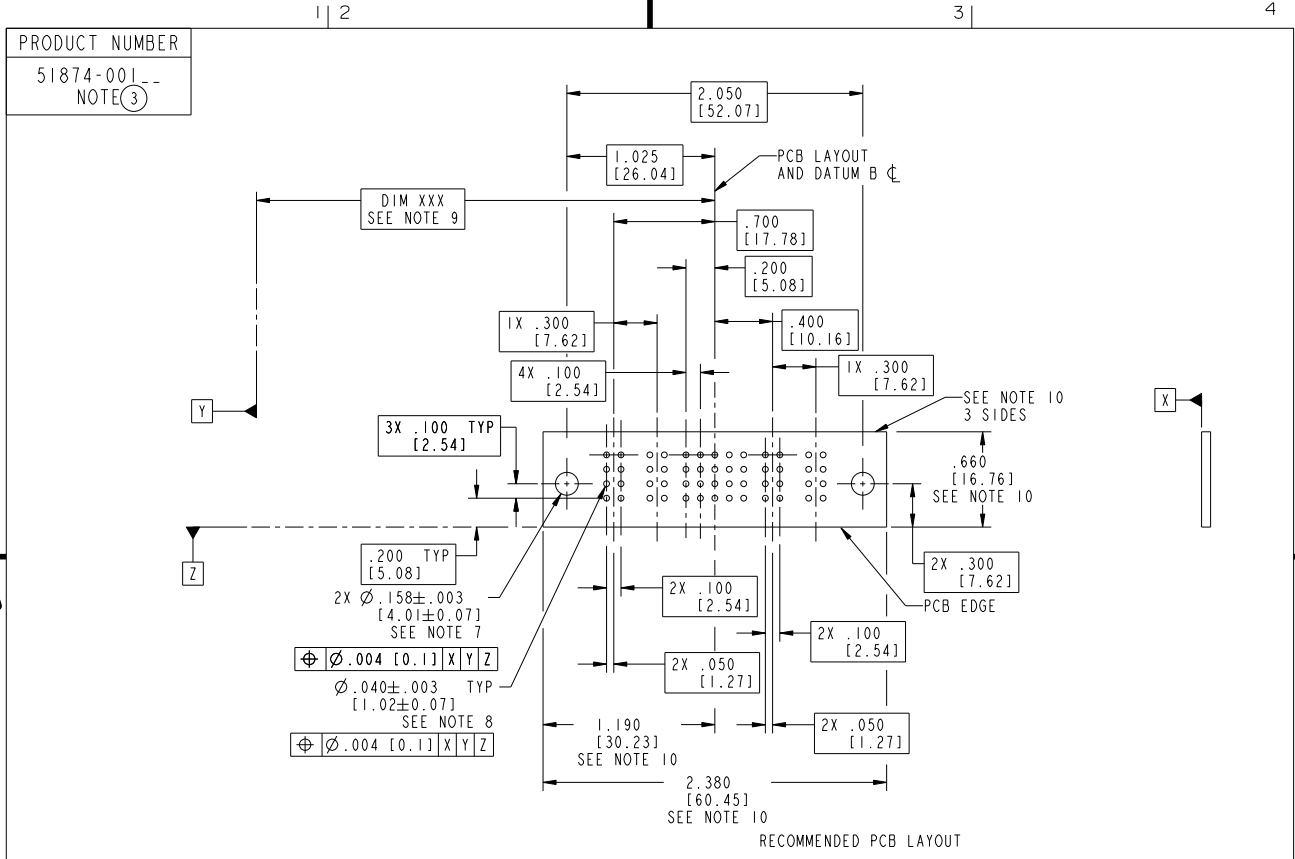
B

B

Tous droits strictement réservés. Reproduction ou communication à des tiers interdite sans quelque forme que ce soit sans autorisation écrite du propriétaire. Propriété de c FCI. Droits de reproduction FCI.



All rights strictly reserved. Reproduction or issue to third parties in any form whatsoever is not permitted without written authority from the proprietor. Property of FCI. Copyright FCI.



RECOMMENDED PCB LAYOUT

mat'l code				SEE NOTE 2		tolerances unless otherwise specified		CUSTOMER		FCI	
ltr	ech no.	dr	date	linear	.XX±.01/0.X±0.3	projection	COPY		www.fciconnect.com		
E				angles	.XXX±.005/0.XX±0.13		title		2P + 20S + 2P		
				dr	.XXXX±.0020/0.XXX±0.051		RIGHT ANGLE SOLDER HEADER				
				engr	0°±2°	INCH/MM	product family		PwrBlade		
				chr	J. SHAFFER 05-21-02	scale	size		code		
				appd	M. MOSTOLLER 05-21-02	1:1	dwg no		213		
					M. MOSTOLLER 05-21-02		A		51874		
sheet index	revision sheet										sheet 3 of 4

1 | 2

Pro/E

PDM: Rev:E

STATUS: Released

Printed: Dec 20, 2010

Tous droits strictement réservés. Reproduction ou communication à des tiers interdite sous quelque forme que ce soit sans autorisation écrite du propriétaire. Propriété de c FCI. Droits de reproduction FCI.



All rights strictly reserved. Reproduction or issue to third parties in any form whatsoever is not permitted without written authority from the proprietor. Property of FCI. Copyright FCI.

1 | 2

3 |

4

PRODUCT NUMBER
51874-001--
NOTE ③

NOTES:

1. DIMENSIONS AND TOLERANCES ARE IN ACCORDANCE WITH ASME Y14.5M, 1994 UNLESS OTHERWISE SPECIFIED.

CONNECTOR NOTES:

②. HOUSING MATERIAL: UL 94 V-0 GLASS FILLED HIGH-TEMP THERMOPLASTIC
 POWER CONTACT MATERIAL: COPPER ALLOY
 SIGNAL PIN MATERIAL: COPPER ALLOY

⚠ 3. SEE ITEM 1 & 2 IN PRINT 10064183 FOR PLATING SPEC OF 51874-001 AND 51874-001LF RESPECTIVELY.

④. MANUFACTURER'S NAME, P/N, AND DATE CODE TO APPEAR ON THIS SURFACE.

5. PRODUCT SPECIFICATION GS-12-149.
 APPLICATION SPECIFICATION BUS-20-067.

PCB NOTES:

6. ALL HOLE DIAMETERS ARE FINISHED HOLE SIZE.
 7. MOUNTING HOLES, WHERE APPLICABLE, ARE UNPLATED.

⑧. $\varnothing .0453 \pm 0.0010$ [1.151 ± 0.025] DRILLED HOLES PLATED WITH
 0.0003 [0.008] MIN SnPb OVER .001 [0.03]
 TO .003 [0.08] Cu PLATING TO ACHIEVE
 $\varnothing .040 \pm .003$ [1.02 ± .07] HOLE.

⑨. "DIM XXX" TO BE DETERMINED BY THE CUSTOMER.

⑩. CONNECTOR KEEP-OUT ZONE.

11. ⚠ SYMBOL WILL BE NEXT TO ANY DIMENSION, VIEW, OR NOTE WHICH HAS BEEN MODIFIED WITH THE CURRENT DRAWING REVISION.

mat'l code				SEE NOTE 2		tolerances unless otherwise specified		CUSTOMER		FCI		www.fciconnect.com	
ltr	ech no.	dr	date	linear	.XX±.01/0.X±0.3	projection	COPY		title		2P + 20S + 2P		
E				angles	.XXX±.005/0.XX±0.13		INCH/MM		product family		PwrBlade		code
				dr	.XXXX±.0020/0.XXX±0.051		scale		size		dwg no		213
				enr	J. SHAFFER 05-21-02	1:1		A		51874		sheet	4 of 4
				chr	M. MOSTOLLER 05-21-02								
				appd	M. MOSTOLLER 05-21-02								
sheet index	revision sheet												

1 | 2

Pro/E

PDM: Rev:E

STATUS: Released

Printed: Dec 20, 2010

A

B