

Excellent Integrated System Limited

Stocking Distributor

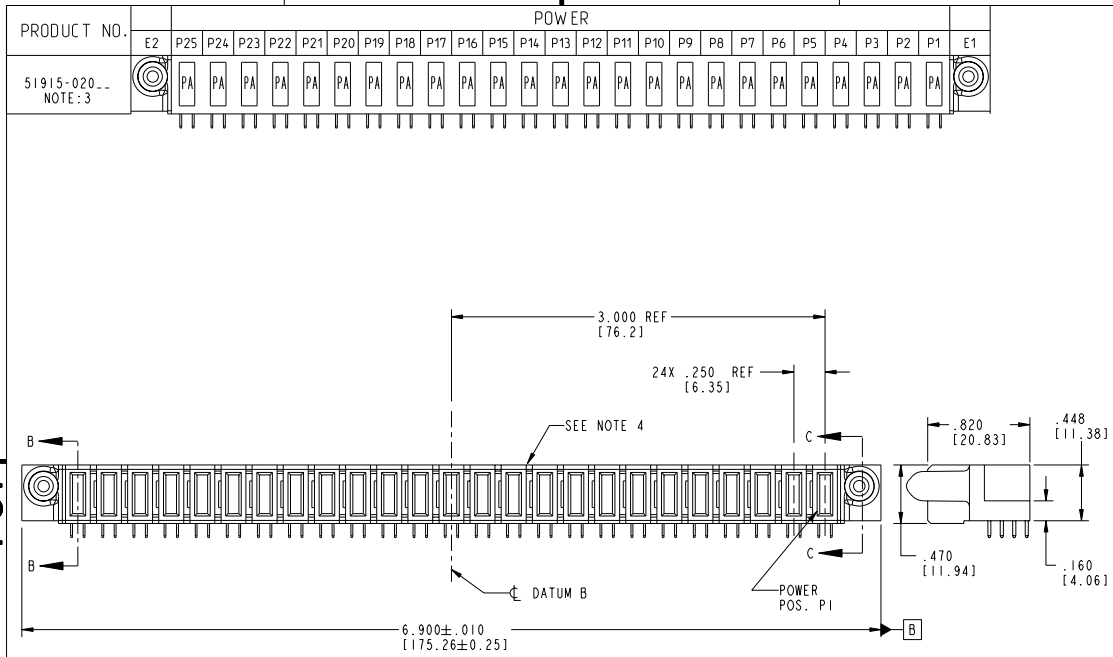
Click to view price, real time Inventory, Delivery & Lifecycle Information:

[FCI](#)
[51915-020](#)

For any questions, you can email us directly:
sales@integrated-circuit.com

Tous droits strictement réservés. Reproduction ou communication de ces lignes infidèle sans aucune forme que ce soit sans autorisation écrite du propriétaire. Propriété de c FCI. Droits de reproduction FCI.

All rights strictly reserved. Reproduction or issue in any form without written authority from the proprietor. Property of FCI. Copyright FCI.



CODE		DIM "M" MATING LENGTH	CONTACT TYPE
PA		.042 [1.07]	POWER

mat'l code		SEE NOTE 2	tolerances unless otherwise specified	CUSTOMER	FCI	www.fciconnect.com
ltr	ecm no.	dr	date	projection	COPY	
A	V03-0011	TAB	01/08/03	lineor	title	
B	DG05-0355	CS	09/27/05	angles	R/A SOLDER RECEPTACLE	
				dr	product family	
				engr	PwrBlade	
				chr	size	
				appd	dwg no	
					51915-020	
sheet index	revision sheet	B	B	scale	code	
1	2	3	4	1:1	22526	

PDM: Rev:B

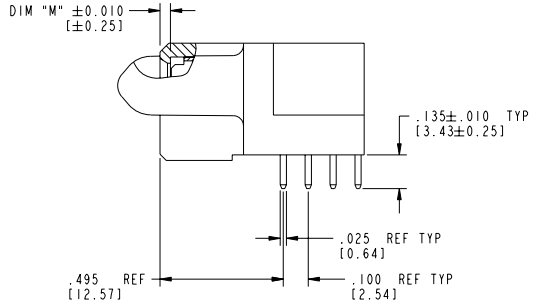
STATUS: Released

Printed: Dec 20, 2010

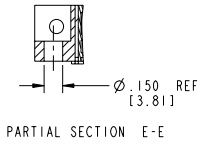
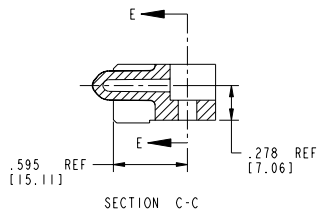
Tous droits strictement réservés. Reproduction ou communication à des fins interdites sans aucune forme que ce soit sans autorisation écrite du propriétaire. Propriété de FCI. Droits de reproduction FCI.

All rights strictly reserved. Reproduction or issue to third parties in any form whatever is not permitted without written authority from the proprietor. Property of FCI. Copyright FCI.

PRODUCT NUMBER
51915-020
NOTE: 3



BROKEN-OUT SECTION B-B
SCALE 2:1



mat'l code				SEE NOTE 2	tolerances unless otherwise specified	CUSTOMER		FCI	
lfr	ecm no.	dr	date	linear	XX±.01/0.XX±0.3	COPY		www.fciconnect.com	
B				angles	XXX±.005/0.XX±0.13	projection	title		25P
				dr	XXX±.0020/0.XX±0.051	INCH/MM	R/A SOLDER RECEPTACLE		
				engr	T. BRUNGARD 01/08/03	scale	product family	PwrBlade	code
				chr	W. MOSTOLLER 01/08/03	1:1	size	51915-020	213
				appd	W. MOSTOLLER 01/08/03		sheet	2 of 4	
sheet index	revision sheet								

Pro/E

PDM: Rev:B

STATUS: **Released**

Printed: Dec 20, 2010

Tous droits r serv s. Reproduction ou communication de ces lignes infid lie
 sans autorisation formelle de la part de son titulaire est formellement interdite.
 Propri t  de FCI. Droits de reproduction FCI.

All rights strictly reserved. Reproduction or issue in third parties in any
 form whatever is not permitted without written authority from the proprietor.
 Property of FCI. Copyright FCI.

PRODUCT NUMBER
 51915-020
 NOTE: 3

NOTES:

1. DIMENSIONS AND TOLERANCES ARE IN ACCORDANCE WITH
 ASME Y14.5M, 1994 UNLESS OTHERWISE SPECIFIED.

CONNECTOR NOTES:

2. HOUSING MATERIAL: UL 94 V-0 GLASS FILLED
 HIGH-TEMP THERMOPLASTIC
 POWER CONTACT MATERIAL: COPPER ALLOY
 SIGNAL PIN MATERIAL: COPPER ALLOY

3. PLATING:
 51915-020 Single Pin: 30u"/0.76um Au OVER 50u"/1.27um Ni ON THE CONTACT AREA,
 AND 100u"/2.54um SnPb PLATING OVER 50u"/1.27um Ni ON THE TERMINATION SECTION.
 Power Pin: 30u"/0.76um Au OVER 50u"/1.27um Ni ON THE CONTACT AREA,
 AND 100u"/2.54um SnPb PLATING OVER 50u"/1.27um Ni ON THE TERMINATION SECTION.

51915-020LF Single Pin: 30u"/0.76um Au OVER 50u"/1.27um Ni ON THE CONTACT AREA,
 AND 78u"/2.00um Sn PLATING OVER 50u"/1.27um Ni ON THE TERMINATION SECTION.
 Power Pin: 30u"/0.76um Au OVER 50u"/1.27um Ni ON THE CONTACT AREA,
 AND 78u"/2.00um Sn PLATING OVER 50u"/1.27um Ni ON THE TERMINATION SECTION.

PART NUMBER 51915-020LF MEETS EUROPEAN UNION DIRECTIVE AND OTHER ICOUNTRY REGULATIONS AS DESCRIBED IN GS-22-008.

THE HOUSING WILL WITHSTAND EXPOSURE TO 260° PEAK TEMPERATURE FOR 10 SECONDS IN A WAVE SOLDER APPLICATION WITH A CIRCUIT BOARD.

4. MANUFACTURER'S NAME, P/N, AND DATE CODE TO APPEAR ON
 THIS SURFACE.

5. PRODUCT SPECIFICATION GS-12-149.
 APPLICATION SPECIFICATION BUS-20-067.

6. PACKAGED IN TRAYS.

PCB NOTES:

7. ALL HOLE DIAMETERS ARE FINISHED HOLE SIZE.

8. MOUNTING HOLES, WHERE APPLICABLE, ARE UNPLATED.

9. $\varnothing .0453 \pm .0010$ [1.151 \pm 0.025] DRILLED HOLES PLATED WITH
 .0003 [0.008] MIN SnPb OVER .001 [0.03]
 TO .003 [0.08] Cu PLATING TO ACHIEVE
 $\varnothing .040 \pm .003$ [1.02 \pm .07] HOLE.

10. "DIM XXX" TO BE DETERMINED BY THE CUSTOMER.

11. CONNECTOR KEEP-OUT ZONE.

mat'l code		SEE NOTE 2	tolerances unless otherwise specified	CUSTOMER	
ltr	ecm no.	dr	date	COPY	
B				projection	www.fciconnect.com
			linear	$XX \pm .01/0. XX \pm 0.3$	title
			angles	$XXX \pm .002/0. XX \pm 0.051$	R/A SOLDER RECEPTACLE
			dr	$0^\circ \pm 2^\circ$	product family
			eng	T. BRUNGARD 01/08/03	PwrBlade
			chr	M. MOSTOLLER 01/08/03	code
			appd	M. MOSTOLLER 01/08/03	213
sheet index	revision sheet			scale	4 of 4
				INCH/MM	
				1:1	
				A	
				size	
				51915-020	

code code 22526

PDM: Rev:B STATUS: **Released**

Printed: Dec 20, 2010