

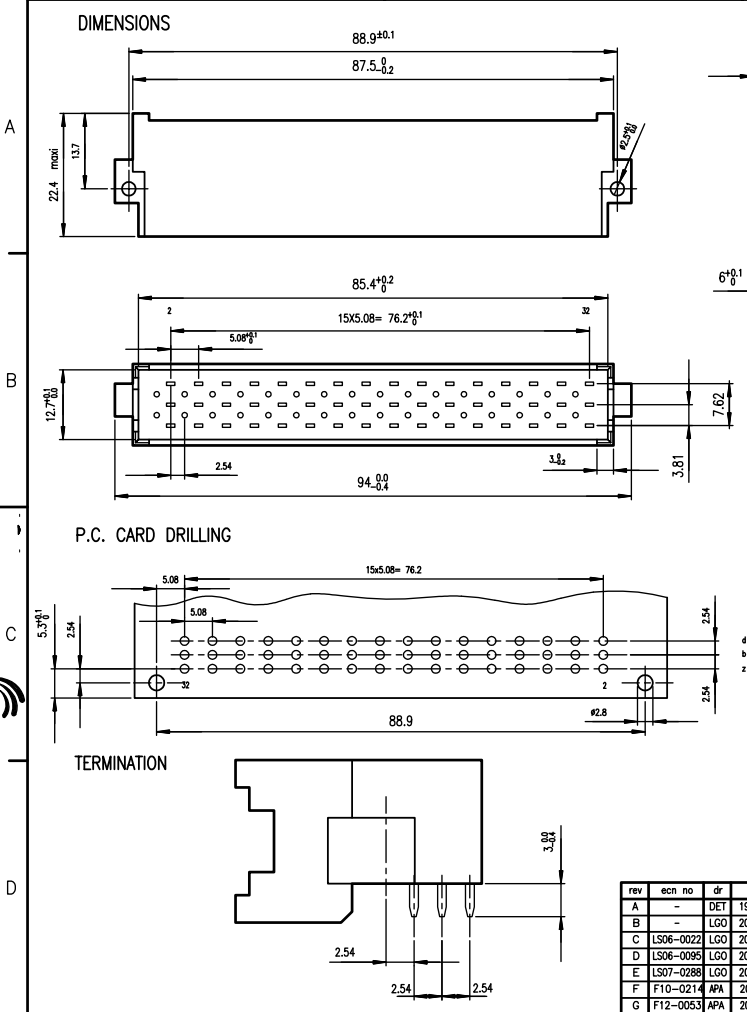
## Excellent Integrated System Limited

Stocking Distributor

Click to view price, real time Inventory, Delivery & Lifecycle Information:

[FCI](#)  
[5159009486354111LF](#)

For any questions, you can email us directly:  
[sales@integrated-circuit.com](mailto:sales@integrated-circuit.com)



**ELECTRICAL DATA**

- Current at AMB. 5.5 A at 20° / 4 A at 70°
- Contact resistance ≤15mΩ according to DIN 41640 Teil 4 test 2a
- Insulation resistance ≥10<sup>9</sup> MΩ according to DIN 41640 teil 7 test 3a
- TEST VOLTAGE according to DIN 41640 teil 21
- contact/contact 1550 V
- contact/ground 2500 V

**MECHANICAL DATA**

- Insertion force ≤75N
- Mechanical endurance 400 matings unmatings according to DIN41640 teil 21
- Material insulator Polycarbonate UL94V1
- Material contacts Copper alloy
- Finishing contact surface Gold over nickel
- Finishing termination Lead-free
- Shock ≤30mΩ according to DIN 41640 Teil 14 test 6c
- Vibration 10-500Hz/5g according to DIN 41640 Teil 15

**ENVIRONMENTAL DATA**

- Climatic category According to DIN 41612 - class 2
- Corrosion According to DIN 41612 - class 2

**PERFORMANCES AS PER DIN 41612 STYLE F CLASS 2**

**NOTE RoHS INFORMATION**

- The "LF" products meet European Union Directives and other country regulations as described in GS-22-008.
- The housing will withstand exposure to 260°C peak temperature for 3.5 seconds in a wave solder application with a 1.6mm minimum thick circuit board.
- For the right angled versions, like the current leaded versions, it's recommended to use high temperature adhesive or metallic device, to protect the nearest plastic part in contact with of the solder wave, to avoid any visual plastic deterioration.

**LEAD-FREE PART-NUMBER**  
5159009486354111LF

www.fciconnect.com		surface ISO 1302 ✓	tolerance std ISO 406 ISO 1101	projection mm
TOLERANCES UNLESS OTHERWISE SPECIFIED				
Dr	ETIEMBRE	1993/12/22	ANGULAR	LINEAR
Eng	GOISNARD	1993/12/22	0.X	±0.1
Chr	LEGARE	1993/12/22	0.XX	±0.1
Appr	LEGARE	1993/12/22	0.XXX	±0.1
Product family		DIN Spec ref -		
<b>FCI</b> title <b>MALE CONNECTOR 3 ROWS</b>				Rev.
48 CONTACTS, STYLE F				C01-5159-0005
catalog no	-		CUSTOMER	sheet 1 of 1

rev	ecm no	dr	date
A	-	DET	1993/12/22
B	-	LGO	2006/12/13
C	LS06-0022	LGO	2006/01/26
D	LS06-0095	LGO	2006/07/28
E	LS07-0288	LGO	2007/11/12
F	F10-0214	APA	2010/10/01
G	F12-0053	APA	2012/05/07

Copyright FCI

REV F - 2006-04-17